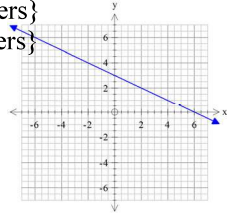


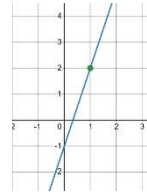
Ch 1 Practice Test Answers

- 1) $\frac{63}{47}$ 2) $-\frac{4}{23}$ 3) 12 4) $x = -13$ 5) $x = 2$ 6) $y = \frac{2}{3}x + 4$

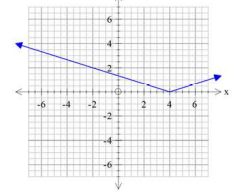
- 7) vertical reflection, up 3, vertical compression
 D: $\{x|x \text{ is all real numbers}\}$
 R: $\{y|y \text{ is all real numbers}\}$



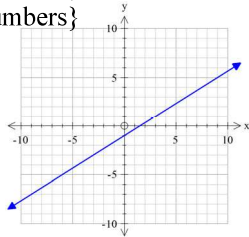
- 8) right 1, up two, stretch by 3
 D: $\{x|x \text{ is all real numbers}\}$
 R: $\{y|y \text{ is all real numbers}\}$



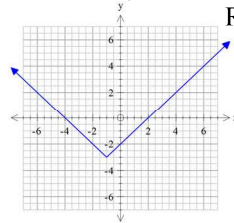
- 9) vertical compression, right 4
 D: $\{x|x \text{ is all real numbers}\}$
 R: $\{y|y \geq 0\}$



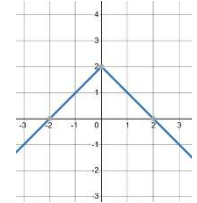
- 10) vertical compression, right 3, up 1
 D: $\{x|x \text{ is all real numbers}\}$
 R: $\{y|y \text{ is all real numbers}\}$



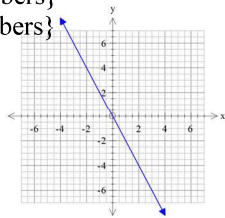
- 11) left 1, down 3
 D: $\{x|x \text{ is all real numbers}\}$
 R: $\{y|y \geq -3\}$



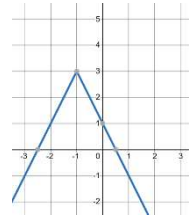
- 12) vertical reflection, up 2
 D: $\{x|x \text{ is all real numbers}\}$
 R: $\{y|y \leq 2\}$



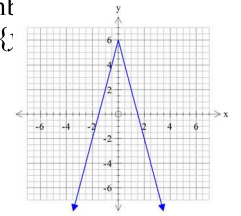
- 13) vertical reflection, vertical stretch
 D: $\{x|x \text{ is all real numbers}\}$
 R: $\{y|y \text{ is all real numbers}\}$



- 14) vertical reflection, vertical stretch, left 1, up 3
 D: $\{x|x \text{ is all real numbers}\}$
 R: $\{y|y \leq 3\}$



- 15) vertical reflection, vertical stretch, up 6
 D: $\{x|x \text{ is all real numbers}\}$
 R: $\{y|y \geq 6\}$

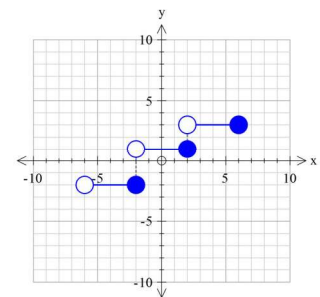
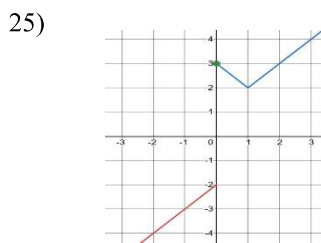
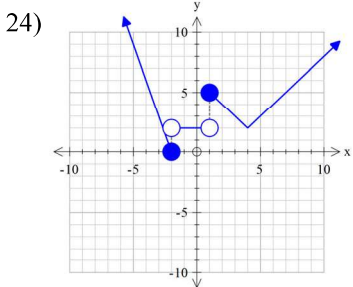


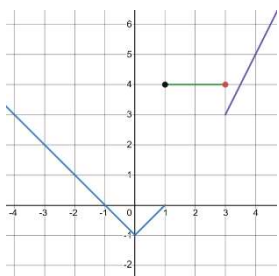
- 16) Set Notation
 D: $\{x|x > 2\}$ R: $\{y|y > -2\}$
 Interval Notation
 D: $(2, \infty)$ R: $(-2, \infty)$

- 17) Set Notation
 D: $\{x|x \leq 0\}$ R: $\{y|y \geq 0\}$
 Interval Notation
 D: $(-\infty, 0]$ R: $[0, \infty)$

- 18) Set Notation
 D: $\{x|-6 \leq x < 8\}$ R: $\{y|-3 \leq y < 4\}$
 Interval Notation
 D: $[-6, 8)$ R: $[-3, 4)$

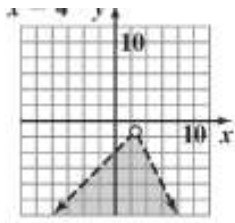
- 19) $(x - 14)(x - 1)$ 20) $(x + 5)(x + 4)$ 21) $(x - 4)(x + 3)$ 22) A 23) A



- 27)  28) $y = \begin{cases} x & \text{if } x < -2 \\ 1 & \text{if } -2 \leq x \leq 1 \\ 3 & \text{if } x > 1 \end{cases}$ 29) (4, -2)

30) No Solution

31)



32)

