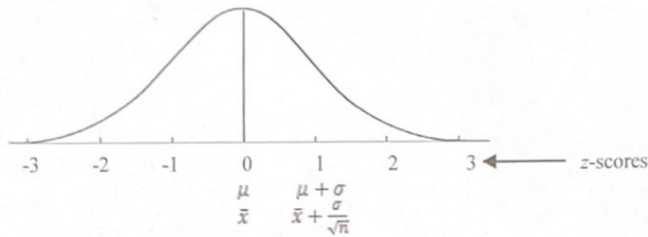



Key



6.1 p.6	<p>To find an area when given a z-score:</p> <p>To the left To the right Between</p>	<p>To find a z-score when given an area:</p>	6.3 p.10
6.1 p.4	<p>To find a z-score when given a mean, standard deviation, and x-score:</p>	<p>To find a x-score when given a z-score, mean, and standard deviation:</p>	6.3 p.11
6.2 p.9	<p>To find an area when given a mean, standard deviation, and x-score:</p> <p>Step 1  Step 2</p> <p>Find probability normalcdf(low, high, μ, σ)</p>	<p>To find an x-score when given an area, mean, and standard deviation:</p>	6.3 p.12
6.4 p.13	<p>To find a mean of a sampling distribution:</p>	<p>Note: The population distribution must be <u>normal</u> OR $n \geq 30$. to use Central Limit Thm</p>	6.4 p.14
6.4 p.13	<p>To find the standard error of the mean of a sampling distribution:</p>	<p>Note: The standard error is the standard deviation divided by the square root of the sample size of the sampling distribution.</p>	
6.4 p.16 -17 Ex.	<p>To find an area when given a mean, standard deviation, sample size, and x-score of a sampling distribution:</p>	<p>Note: The population distribution must be <u>normal</u> OR $n \geq 30$.</p>	