



North Valleys Regional Conversation

Washoe County School District
Facility Modernization Plan
*Investments for
Equity, Efficiency, and Community*

May 8, 2023

We'll get
started soon.
Please sit
with people
you don't
already know

CANNONDESIGN

Agenda

Welcome (5 min)

Context (5 min, presentation)

Data (10 min, presentation)

Draft Options (15 min, presentation)

Conversation (40 min, activity)

Survey (10 min, live poll)

Next Steps (5 min)



Context

CANNONDESIGN



Recent Progress in North Valleys Schools

O'Brien Middle School Reconstruction
Debbie Smith Career Tech Academy
New Inskeep Elementary School



O'Brien Middle School Reconstruction

Purpose:

- Relieve crowding
- Unify PK-5, 6-8 grade configuration
- Replace outdated 1976 facility
- Provide facilities equitable with newest Middle Schools



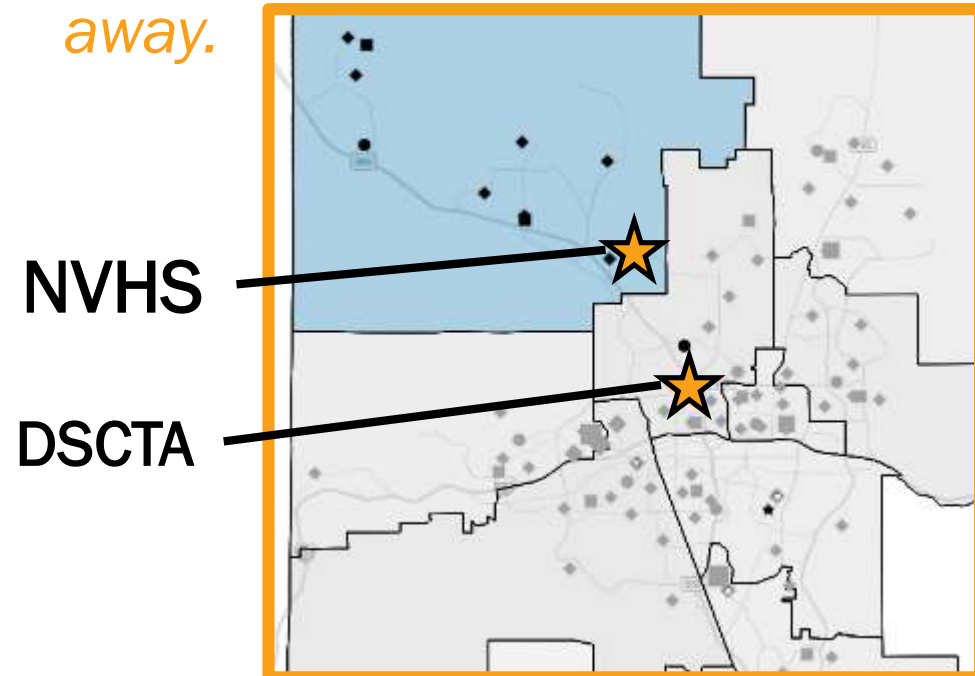
O'Brien Middle School Reconstruction



Debbie Smith Career Tech Academy (opening fall 2025)

Purpose:

- Create new, specialized programs for career pathways.
- Transform an aging campus
- *Provide capacity to relieve area crowding, particularly at North Valleys High School, ~6 miles away.*



Inskeep Elementary School (2021)

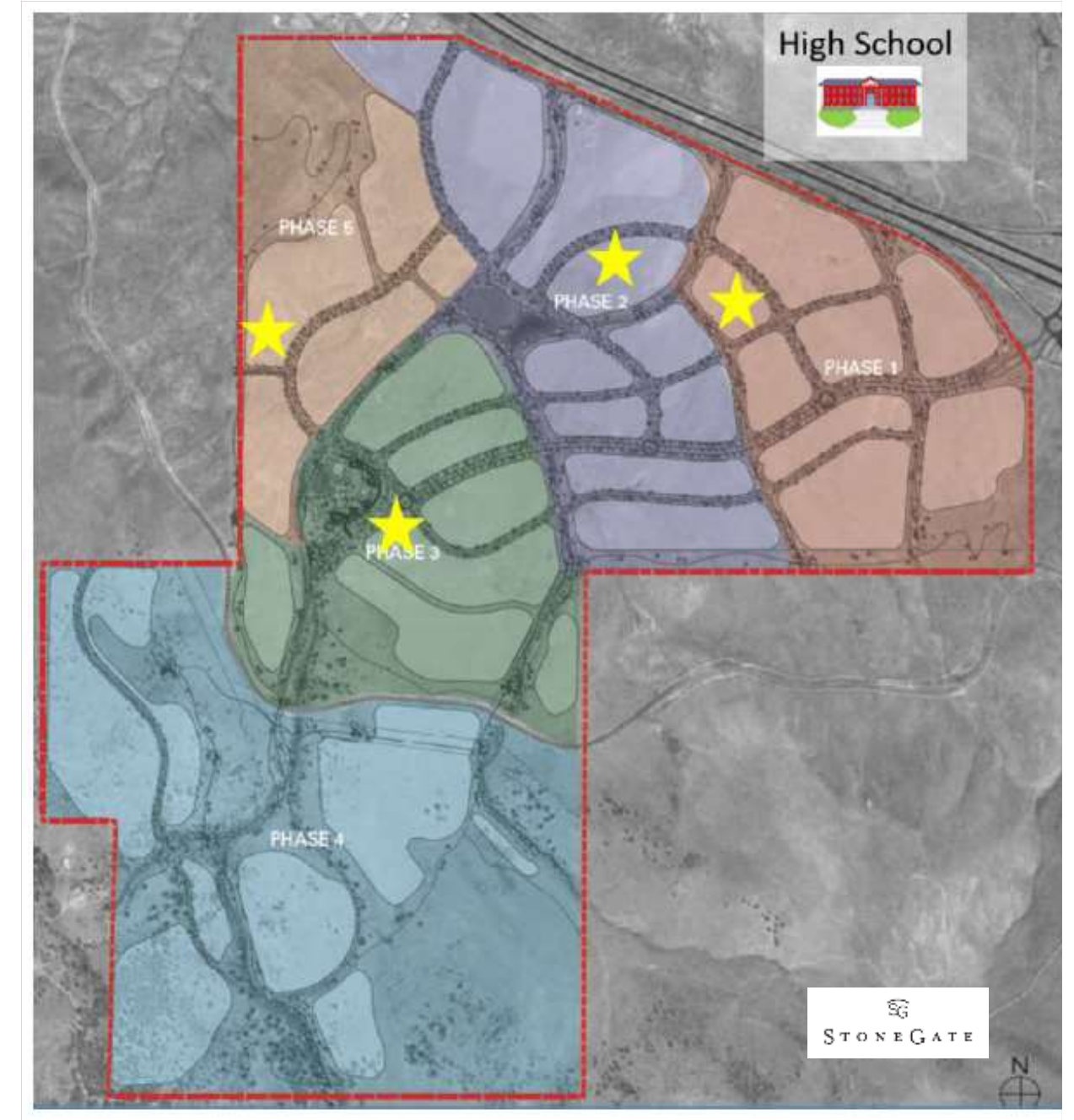
Purpose:

- Relieve elementary crowding
- Prepare for future growth
- Unified PK-5, 6-8 grade configuration
- *Community partnerships and conversations influenced the project location.*



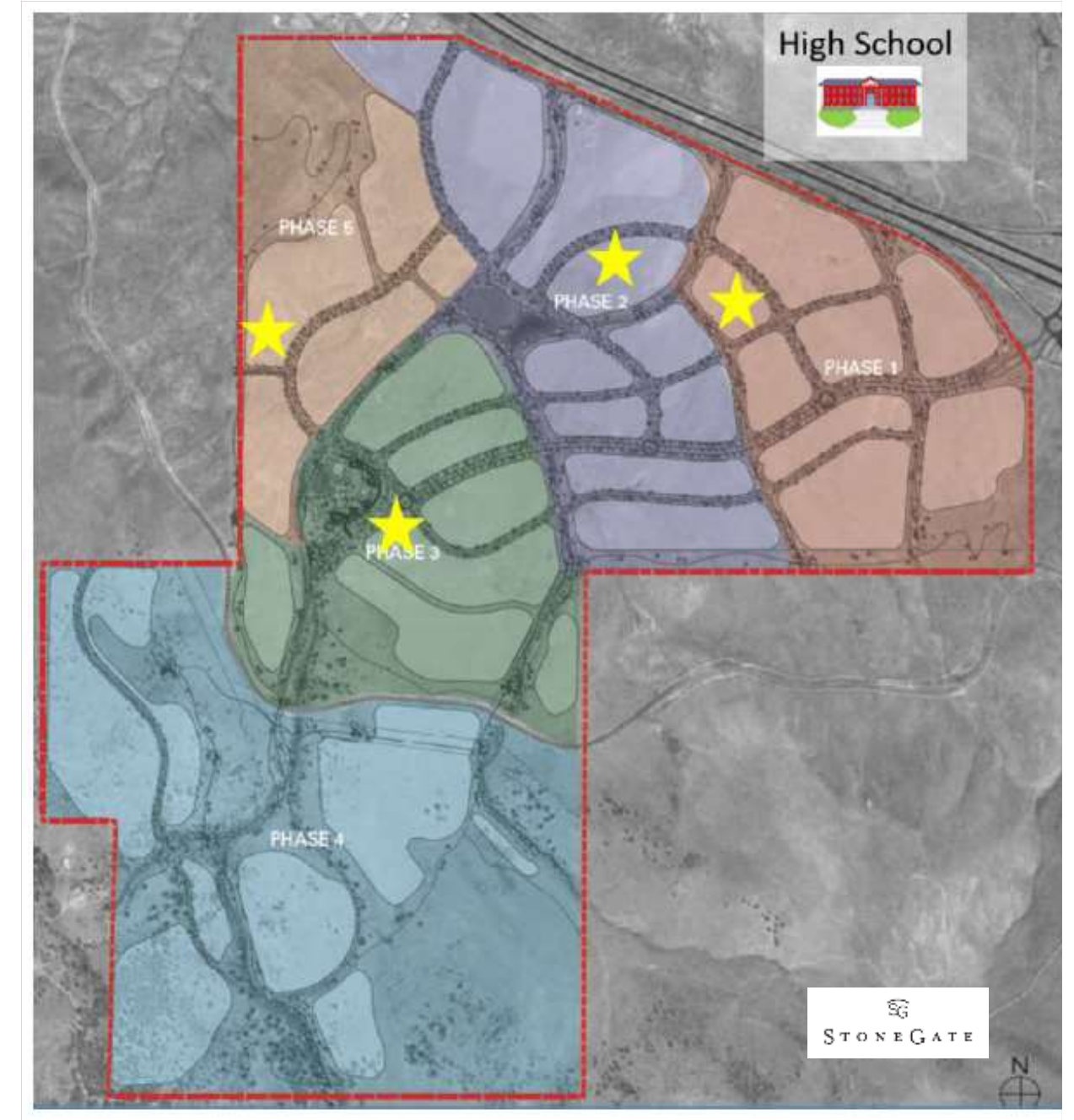
Future New Cold Springs Area High School

- Promised in 2016 WC-1 campaign at a period of rapid growth.
- Since then, WCSD has worked to secure land for a new high school and monitored growth and development.
- In 2023, Stonegate housing development is currently stalled.
- As a result, WCSD doesn't have land for a new school, and municipal infrastructure isn't yet in place.



Future New Cold Springs Area High School

- While NVHS is currently large and crowded, there aren't enough students (yet) for a new full-sized high school.
- A smaller high school now would not have the scale to provide the quality educational program North Valleys/Cold Springs students deserve.



Why are we here tonight?

Your perspectives are valued.

The next phase of the WCSD's WC-1-funded Capital Improvements Program is focused on major investments in the oldest schools.

We owe it to our students and teachers to take stock of circumstances and determine how to best invest public resources in their futures.

The District is exploring different options and believes community participation is essential to designing the best solutions. No decisions have been made!



Facility Master Plan Process & Timeline



Meeting Agreements

- Students first.
- Assume positive intent.
- Space for everyone to speak.
- Respect differences - it's okay to disagree.
- Be mindful of who isn't in the room.
- Respect time.

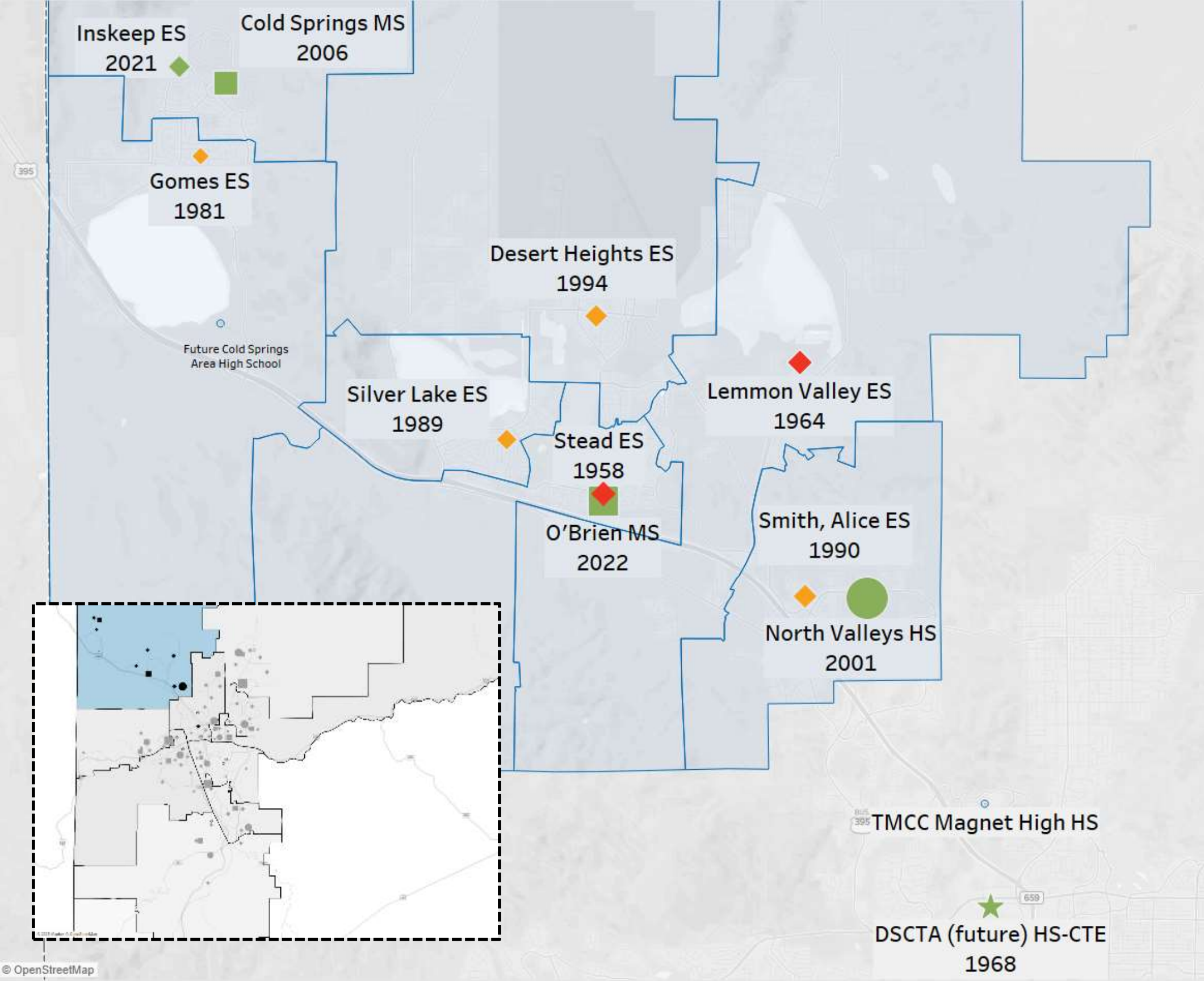


Data

CANNONDESIGN

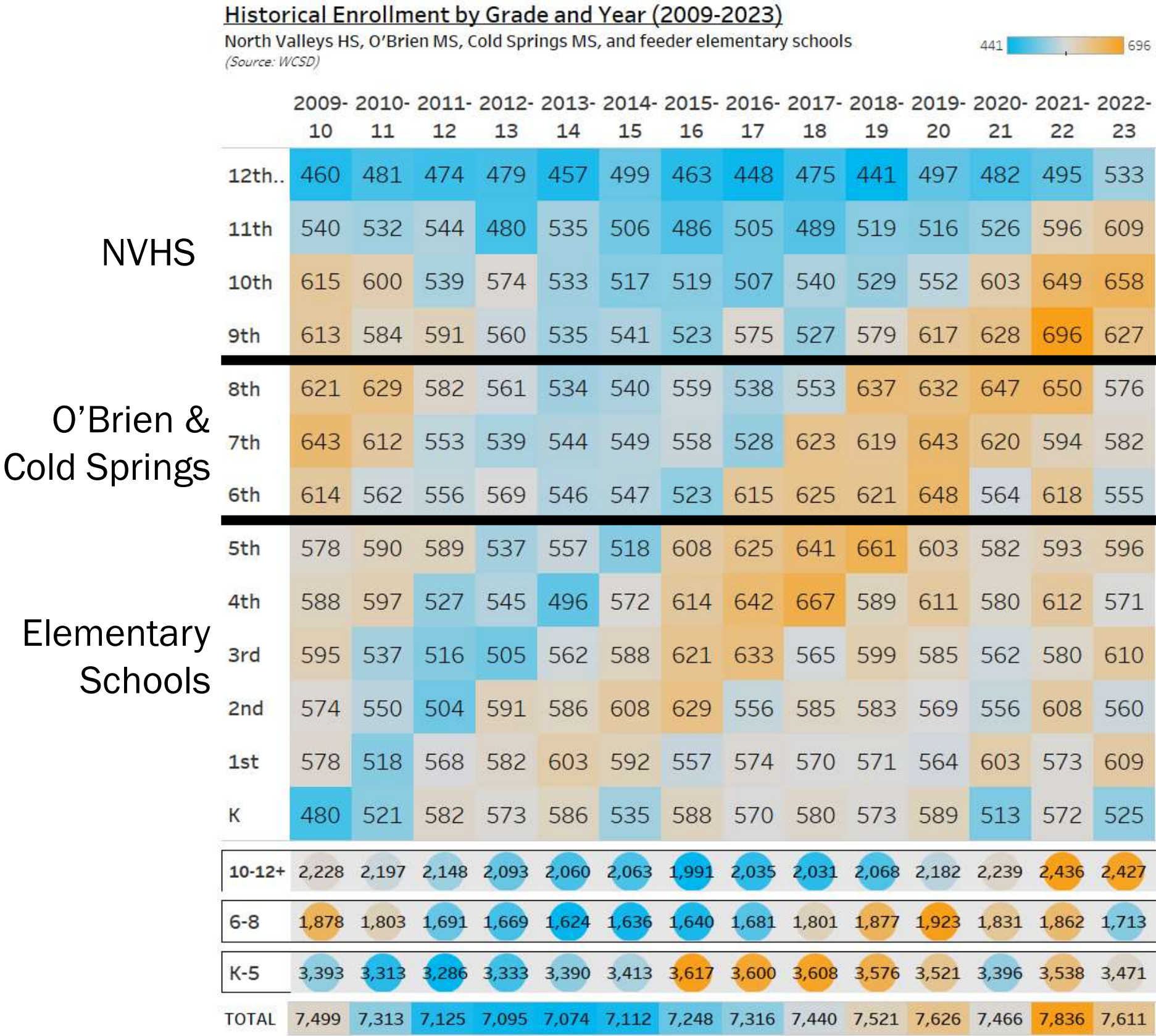


North Valleys HS & Associated Middle and Elementary Schools



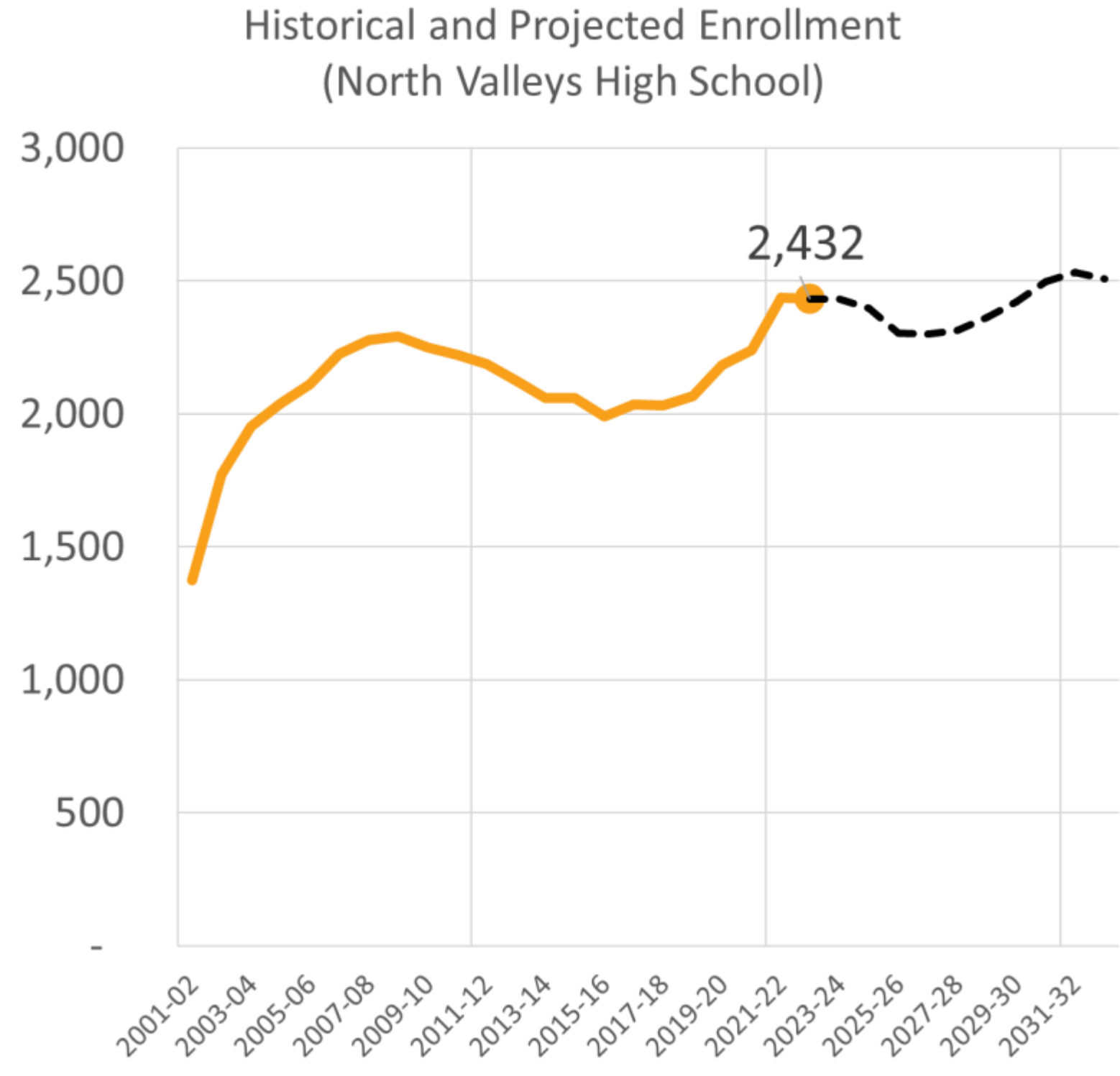
Historical Enrollment

- Large enrollment ‘bubble’ currently in NVHS, with smaller cohorts behind.



Enrollment Projections

- Enrollment in North Valleys has peaked and is currently projected to decline and level out over the next 10 years.
- Currently 525 high school students in Cold Springs area (Gomes and Inskeep elementary zones, 833 with Silver Lake)



Facility Assessment Data

Site name	Year-prototype	Condition	Adequacy	Acres		(a) Enrollment 2022 / 2027 / Growth	Size	(b) WCSD Capacity Perm / Portable	(c = a / b) Capacity Utilization 2027 Perm / Total	(d = b / a) Capacity Surplus/ (Shortage) Perm 2027	Util Perm	Util w Port	
North Valleys HS	2001-HS Wedge (00s)			82.6		2432/2313/-119		2330/197	99% / 92%	17			
Cold Springs MS	2006-MS Courtyard (90s)			20.9		648/733/85		1489/0	49% / 49%	756			
Gomes ES	1981-ES Pod (80s)			10.2		273/299/26		544/95	55% / 47%	245			
Inskeep ES	2021-ES 2-Story L (10s 20s)			10.1		481/496/15		700/0	71% / 71%	204			
Silver Lake ES	1989-ES Pinwheel-1 (80s 90s 00s)			5.0		424/434/10		596/95	73% / 63%	162			
O'Brien MS	2022-One of a Kind			31.1		1065/1208/143		1276/0	95% / 95%	68			
Desert Heights ES	1994-ES Pinwheel-2 (80s 90s 00s)			7.5		453/527/74		816/48	65% / 61%	289			
Lemmon Valley ES	1964-ES Baby Boomer-3 (50s 60s)			8.8		713/642/-71		738/143	87% / 73%	96			
Smith, Alice ES	1990-ES Pinwheel-1 (80s 90s 00s)			11.3		501/598/97		738/143	81% / 68%	140			
Stead ES	1958-ES Baby Boomer-2 (50s 60s)			34.1		702/706/4		790/95	89% / 80%	84			
					MS	1713/1941/228		2765/0	70% / 70%	824			
TOTAL					HS	2432/2313/-119		2330/197	99% / 92%	17			
					ES	3547/3702/155		4922/618	75% / 67%	1,220			

Facility Assessment Data

#1 NVHS capacity is full

Site name	Year-prototype	Condition	Adequacy	Acres		(a) Enrollment 2022 / 2027 / Growth	Size	(b) WCSSD Capacity Perm / Portable	(c = a / b) Capacity Utilization 2027 Perm / Total	(d = b / a) Capacity Surplus/ (Shortage) Perm 2027	Util Perm	Util w Port
North Valleys HS	2001-HS Wedge (00s)			82.6		2432/2313/-119		2330/197	99% / 92%	17		
Cold Springs MS	2006-MS Courtyard (90s)			20.9		648/733/85		1489/0	49% / 49%	756		
Gomes ES	1981-ES Pod (80s)			10.2		273/299/26		544/95	55% / 47%	245		
Inskeep ES	2021-ES 2-Story L (10s 20s)			10.1		481/496/15		700/0	71% / 71%	204		
Silver Lake ES	1989-ES Pinwheel-1 (80s 90s 00s)			5.0		424/434/10		596/95	73% / 63%	162		
O'Brien MS	2022-One of a Kind			31.1		1065/1208/143		1276/0	95% / 95%	68		
Desert Heights ES	1994-ES Pinwheel-2 (80s 90s 00s)			7.5		453/527/74		816/48	65% / 61%	289		
Lemmon Valley ES	1964-ES Baby Boomer-3 (50s 60s)			8.8		713/642/-71		738/143	87% / 73%	96		
Smith, Alice ES	1990-ES Pinwheel-1 (80s 90s 00s)			11.3		501/598/97		738/143	81% / 68%	140		
Stead ES	1958-ES Baby Boomer-2 (50s 60s)			34.1		702/706/4		790/95	89% / 80%	84		
TOTAL						MS 1713/1941/228		2765/0	70% / 70%	824		
						HS 2432/2313/-119		2330/197	99% / 92%	17		
						ES 3547/3702/155		4922/618	75% / 67%	1,220		

Facility Assessment Data

#2 Crowding affects NVHS educational environment

Site name	Year-prototype	Condition	Adequacy	Acres		(a) Enrollment 2022 / 2027 / Growth	Size	(b) WCCO Capacity	Utilization 2027 Perm / Total	(d = b / a) Capacity Surplus/ (Shortage) Perm 2027	Util Perm	Util w Port
North Valleys HS	2001-HS Wedge (00s)			82.6		2432/2313/-119		2330/197	99% / 92%	17		
Cold Springs MS	2006-MS Courtyard (90s)			20.9		648/733/85		1489/0	49% / 49%	756		
Gomes ES	1981-ES Pod (80s)			10.2		273/299/26		544/95	55% / 47%	245		
Inskeep ES	2021-ES 2-Story L (10s 20s)			10.1		481/496/15		700/0	71% / 71%	204		
Silver Lake ES	1989-ES Pinwheel-1 (80s 90s 00s)			5.0		424/434/10		596/95	73% / 63%	162		
O'Brien MS	2022-One of a Kind			31.1		1065/1208/143		1276/0	95% / 95%	68		
Desert Heights ES	1994-ES Pinwheel-2 (80s 90s 00s)			7.5		453/527/74		816/48	65% / 61%	289		
Lemmon Valley ES	1964-ES Baby Boomer-3 (50s 60s)			8.8		713/642/-71		738/143	87% / 73%	96		
Smith, Alice ES	1990-ES Pinwheel-1 (80s 90s 00s)			11.3		501/598/97		738/143	81% / 68%	140		
Stead ES	1958-ES Baby Boomer-2 (50s 60s)			34.1		702/706/4		790/95	89% / 80%	84		
TOTAL						MS 1713/1941/228		2765/0	70% / 70%	824		
						HS 2432/2313/-119		2330/197	99% / 92%	17		
						ES 3547/3702/155		4922/618	75% / 67%	1,220		

Facility Assessment Data

#3 CSMS capacity half-full

Site name	Year-prototype	Condition	Adequacy	Acres		(a) Enrollment 2022 / 2027 / Growth	Size	(b) WCSSD Capacity Perm / Portable	(c = a / b) Capacity Utilization 2027 Perm / Total	(d = b / a) Capacity Surplus/ (Shortage) Perm 2027	Util Perm	Util w Port
North Valleys HS	2001-HS Wedge (00s)			82.6		2432/2313/-119		2330/197	99% / 92%	17		
Cold Springs MS	2006-MS Courtyard (90s)			20.9		648/733/85		1489/0	49% / 49%	756		
Gomes ES	1981-ES Pod (80s)			10.2		273/299/26		544/95	55% / 47%	245		
Inskeep ES	2021-ES 2-Story L (10s 20s)			10.1		481/496/15		700/0	71% / 71%	204		
Silver Lake ES	1989-ES Pinwheel-1 (80s 90s 00s)			5.0		424/434/10		596/95	73% / 63%	162		
O'Brien MS	2022-One of a Kind			31.1		1065/1208/143		1276/0	95% / 95%	68		
Desert Heights ES	1994-ES Pinwheel-2 (80s 90s 00s)			7.5		453/527/74		816/48	65% / 61%	289		
Lemmon Valley ES	1964-ES Baby Boomer-3 (50s 60s)			8.8		713/642/-71		738/143	87% / 73%	96		
Smith, Alice ES	1990-ES Pinwheel-1 (80s 90s 00s)			11.3		501/598/97		738/143	81% / 68%	140		
Stead ES	1958-ES Baby Boomer-2 (50s 60s)			34.1		702/706/4		790/95	89% / 80%	84		
TOTAL						MS 1713/1941/228		2765/0	70% / 70%	824		
						HS 2432/2313/-119		2330/197	99% / 92%	17		
						ES 3547/3702/155		4922/618	75% / 67%	1,220		

Facility Assessment Data *#4 Aging elementary facilities*

Site name	Year-prototype	Condition	Adequacy	Acres		(a) Enrollment 2022 / 2027 / Growth	Size	(b) WUSD Capacity Perm / Portable	(c = a / b) Capacity Utilization 2027 Perm / Total	(d = b / a) Capacity Surplus/ (Shortage) Perm 2027	Util Perm	Util w Port
North Valleys HS	2001-HS Wedge (00s)			82.6		2432/2313/-119		2330/197	99% / 92%	17		
Cold Springs MS	2006-MS Courtyard (90s)			20.9		648/733/85		1489/0	49% / 49%	756		
Gomes ES	1981-ES Pod (80s)			10.2		273/299/26		544/95	55% / 47%	245		
Inskeep ES	2021-ES 2-Story L (10s 20s)			10.1		481/496/15		700/0	71% / 71%	204		
Silver Lake ES	1989-ES Pinwheel-1 (80s 90s 00s)			5.0		424/434/10		596/95	73% / 63%	162		
O'Brien MS	2022-One of a Kind			31.1		1065/1208/143		1276/0	95% / 95%	68		
Desert Heights ES	1994-ES Pinwheel-2 (80s 90s 00s)			7.5		453/527/74		816/48	65% / 61%	289		
Lemmon Valley ES	1964-ES Baby Boomer-3 (50s 60s)			8.8		713/642/-71		738/143	87% / 73%	96		
Smith, Alice ES	1990-ES Pinwheel-1 (80s 90s 00s)			11.3		501/598/97		738/143	81% / 68%	140		
Stead ES	1958-ES Baby Boomer-2 (50s 60s)			34.1		702/706/4		790/95	89% / 80%	84		
TOTAL						MS 1713/1941/228		2765/0	70% / 70%	824		
						HS 2432/2313/-119		2330/197	99% / 92%	17		
						ES 3547/3702/155		4922/618	75% / 67%	1,220		

Facility Assessment Data

#5 Moderate crowding at Stead & Lemmon

Site name	Year-prototype	Condition	Adequacy	Acres		Enrollment 2022/2027 / Growth	Size	(b) WCCSD Capacity Perm / Portable	(c = a / b) Capacity Utilization 2027 Perm / Total	(d = b / a) Capacity Surplus/ (Shortage) Perm 2027	Util Perm	Util w Port
North Valleys HS	2001-HS Wedge (00s)			82.6		2432/2313/-119		2330/197	99% / 92%	17		
Cold Springs MS	2006-MS Courtyard (90s)			20.9		648/733/85		1489/0	49% / 49%	756		
Gomes ES	1981-ES Pod (80s)			10.2		273/299/26		544/95	55% / 47%	245		
Inskeep ES	2021-ES 2-Story L (10s 20s)			10.1		481/496/15		700/0	71% / 71%	204		
Silver Lake ES	1989-ES Pinwheel-1 (80s 90s 00s)			5.0		424/434/10		596/95	73% / 63%	162		
O'Brien MS	2022-One of a Kind			31.1		1065/1208/143		1276/0	95% / 95%	68		
Desert Heights ES	1994-ES Pinwheel-2 (80s 90s 00s)			7.5		453/527/74		816/48	65% / 61%	289		
Lemmon Valley ES	1964-ES Baby Boomer-3 (50s 60s)			8.8		713/642/-71		738/143	87% / 73%	96		
Smith, Alice ES	1990-ES Pinwheel-1 (80s 90s 00s)			11.3		501/598/97		738/143	81% / 68%	140		
Stead ES	1958-ES Baby Boomer-2 (50s 60s)			34.1		702/706/4		790/95	89% / 80%	84		
TOTAL						MS 1713/1941/228		2765/0	70% / 70%	824		
						HS 2432/2313/-119		2330/197	99% / 92%	17		
						ES 3547/3702/155		4922/618	75% / 67%	1,220		

Draft Options

CANNONDESIGN

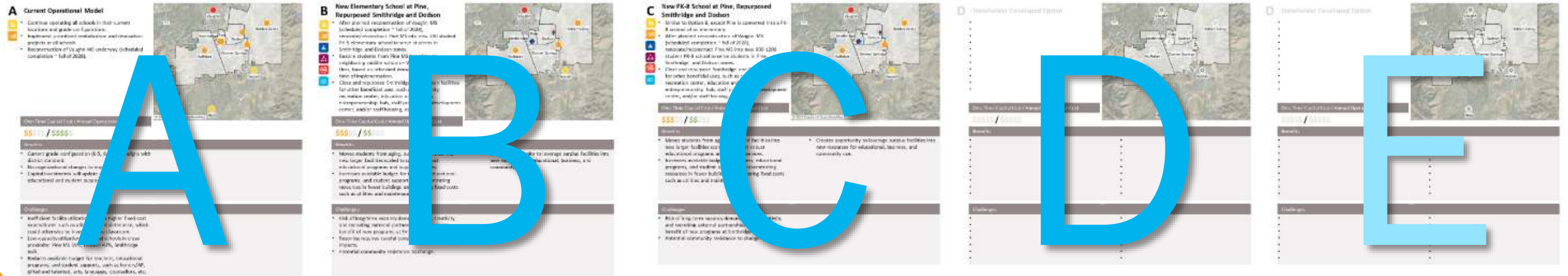




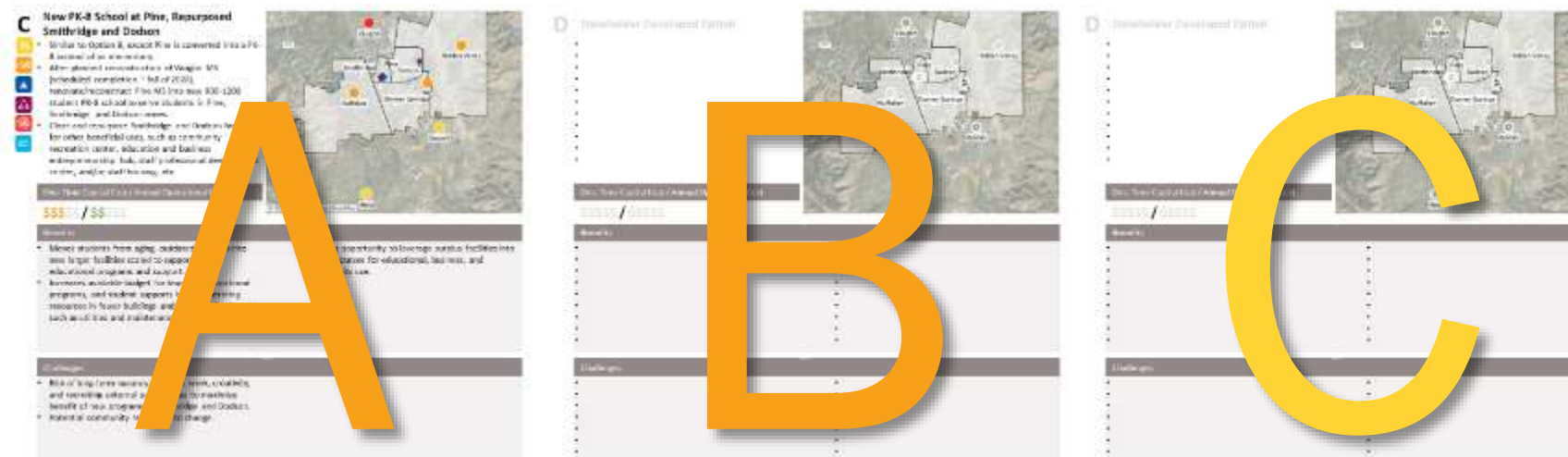
Yes, if...

Draft Options for North Valleys-Area Schools

High School and Middle Schools



Elementary Schools



A Monitored HS Growth Under Current Operational Model



- Continue monitoring area housing developments, municipal road and utility infrastructure, and annual enrollment projections to initiate land procurement and development of new high school in Cold Springs area.
- In the meantime, continue use of portable classrooms to address crowding at North Valleys HS.
- Provide crowding relief to NVHS through student opportunity to attend new Debbie Smith Career Tech Academy (scheduled to open fall 2025).
- Implement priority revitalization and renovation projects at all schools.



One-Time Capital Cost / Annual Operational Cost

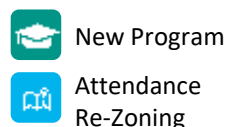
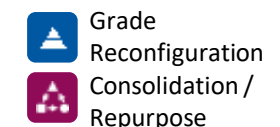
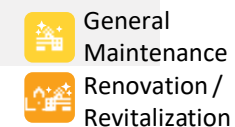
\$\$\$\$\$ / \$\$\$\$\$

Benefits

- Revitalization projects update older facilities with educational program and student support enhancements, such as STEM, Special Education, music, arts, outdoor learning, and security.
- No organizational changes to implement.

Challenges

- Housing development and related municipal roads and utilities has stalled in the area. There are currently only 833 high school students in the Cold Springs zone, with flat enrollment projected.
- At 2,400+ students, NVHS is the largest in Washoe County.
- Even though 5-yr projections indicate a 9% decline in enrollment, in 2027-28 North Valleys HS will operate at 99% capacity utilization requiring continued use of portable classrooms.



B North Valleys High School Additions and Renovations



- Same as Option A, plus:
- Replace NVHS portable classrooms with permanent building addition/s and implement extensive revitalization of existing facilities to enhance educational programs, better support flexible learning, and increase capacity by 200-300 seats.
- Design facilities to support new and enhanced program/s (e.g. STEM, Sustainability, Visual and Performing Arts, Alternative Education, etc.) in collaboration with community stakeholders.



One-Time Capital Cost / Annual Operational Cost

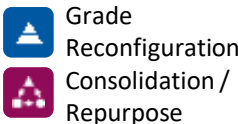
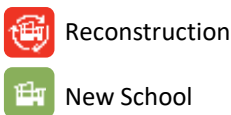
\$\$\$\$\$ / \$\$\$\$\$

Benefits

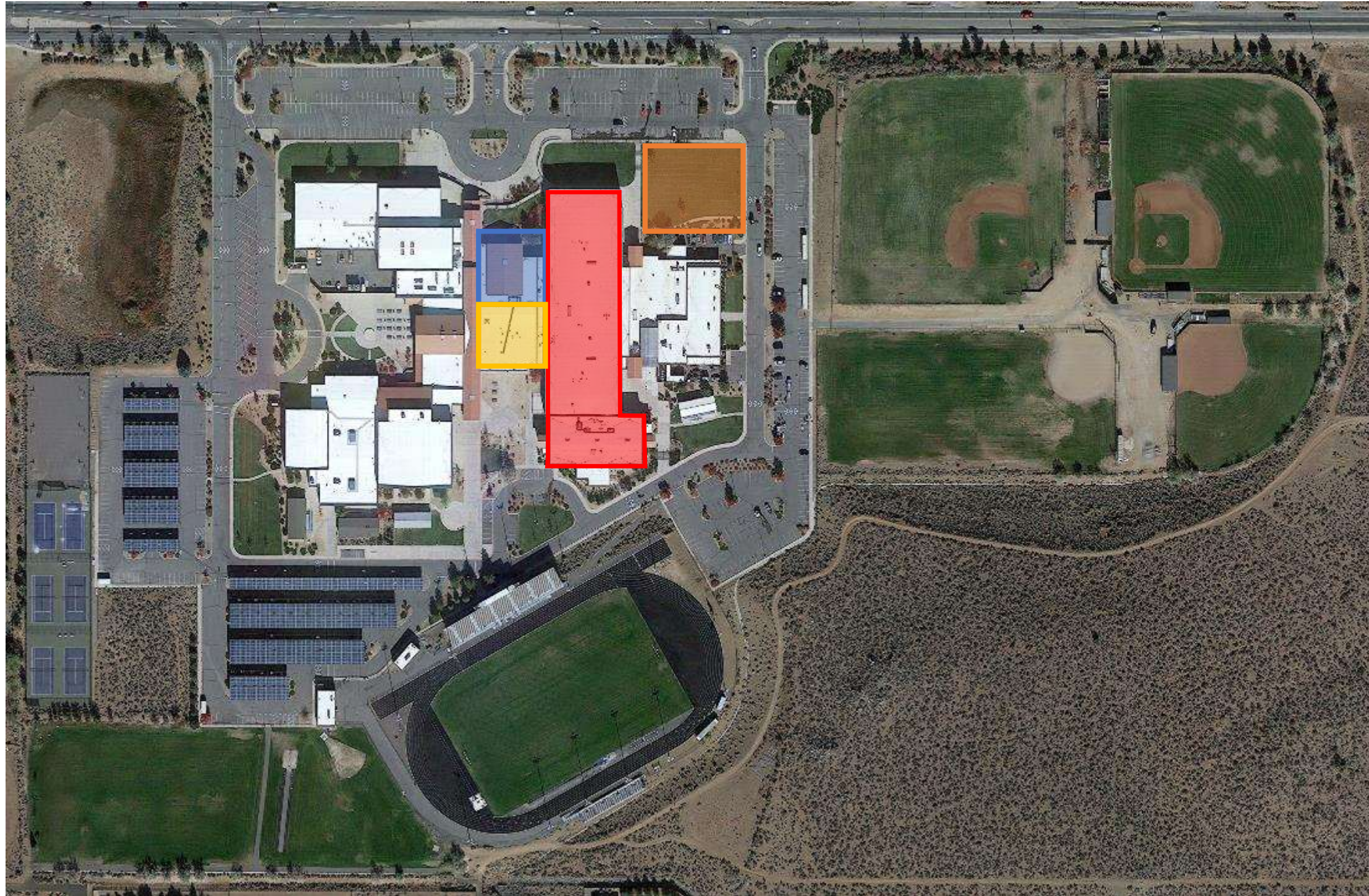
- Relieves crowding at North Valleys HS sooner than waiting for a new high school.
- Creates new educational programs relevant to North Valleys communities and creates professional development opportunities for faculty.
- Accommodates potential Title I staffing supports.
- Revitalization projects update older facilities with educational program and student support enhancements, such as STEM, Special Education, music, arts, outdoor learning, and security.
- Preserves united North Valleys communities with one large high school.

Challenges

- At 2,400+ students, NVHS is the largest in Washoe County.



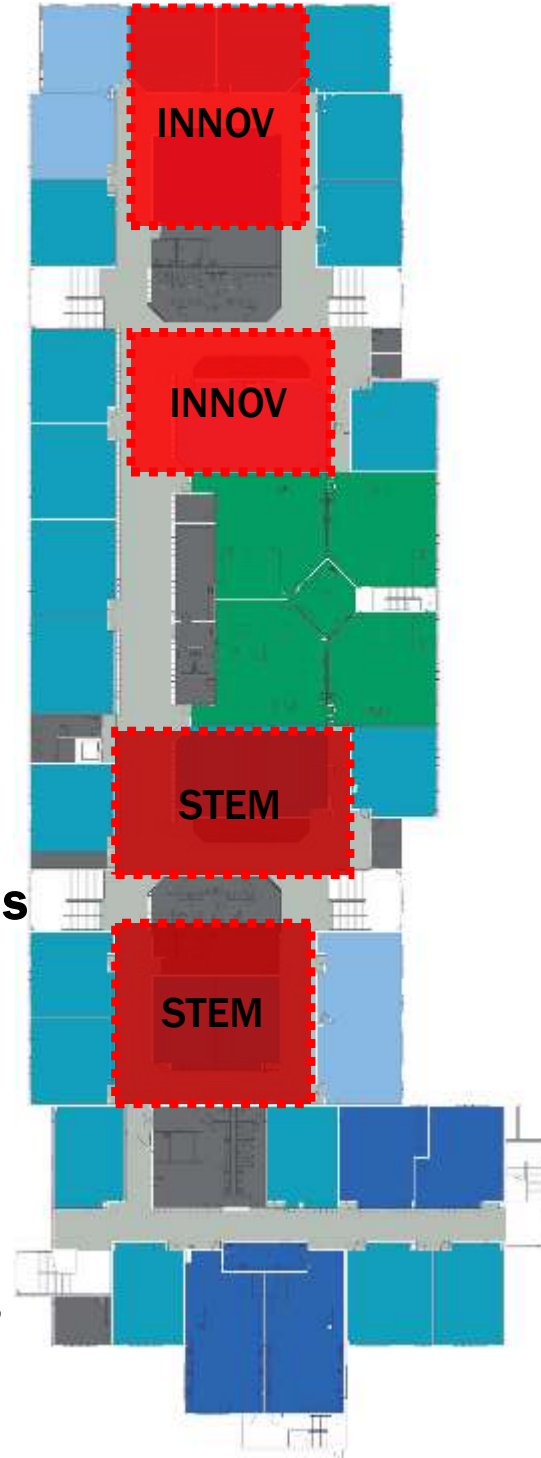
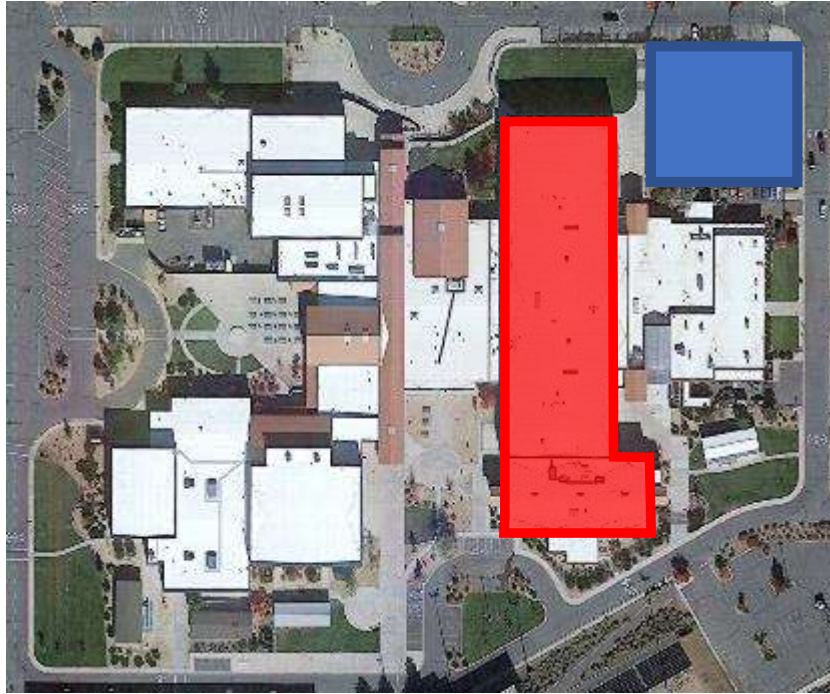
North Valleys High School Additions & Renovations



Potential Areas of Impact

- ❖ **Build New Classroom Addition** for programs designed with students and community, e.g. STEM, Arts, CTE.
- ❖ **Convert existing space into Collaborative Hubs** within General Classroom Instruction Areas.
- ❖ **Transform Library** adjacent to outdoor learning and event space
- ❖ **Secure entry at new administration suite**, relocated to front of school.

New Collaborative Hubs



Second Floor Classroom Block

Reconfigure Approximately 8 Classrooms

Approximately 8,000 SF

Create Centers for Collaboration

- Resource Rich Environments
- Provide Variety In Learning
- Increase Opportunities for Groups

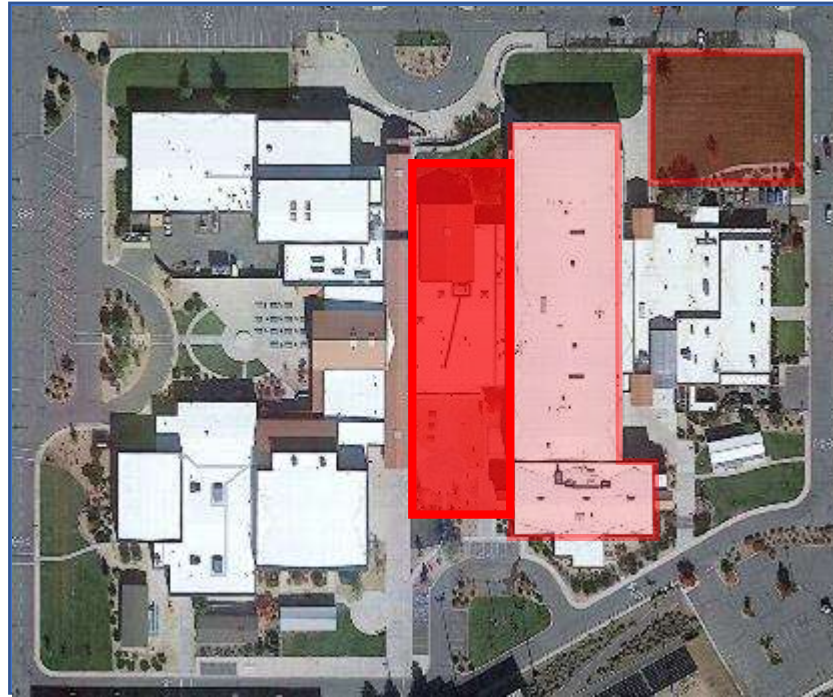
Build New Classroom Wing



Collaborative Hubs



Library Transformation



Relocate Library

Create Next Gen Library Spaces

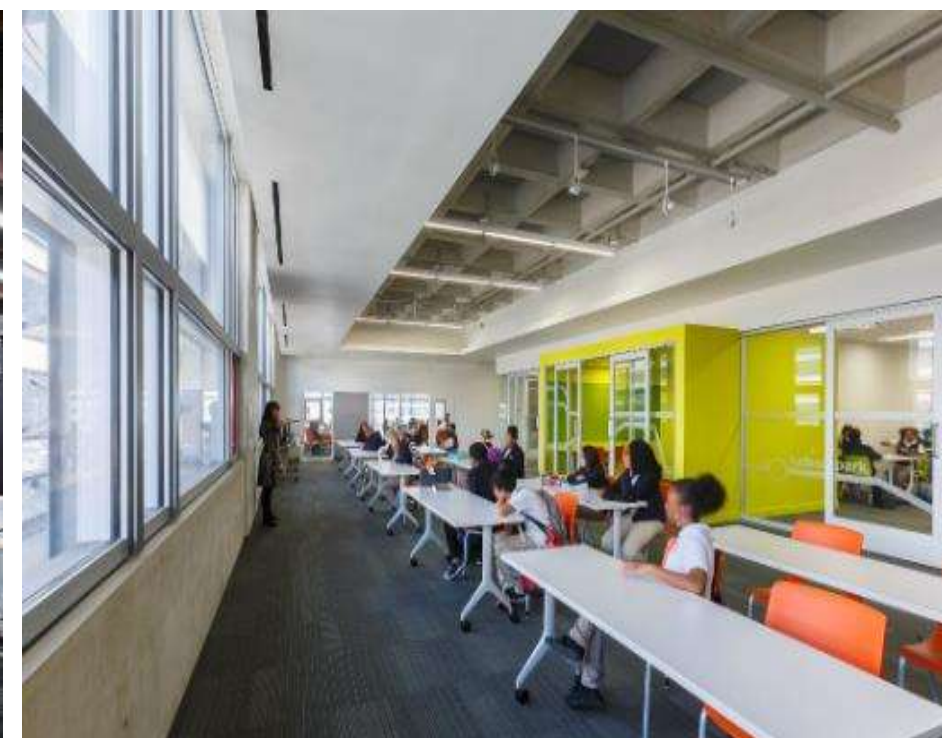
- Small Group, Large Group
- Impromptu Class
- Niche Spaces
- Flexible Spaces
- Breakout Areas

Improve College & Career Experience

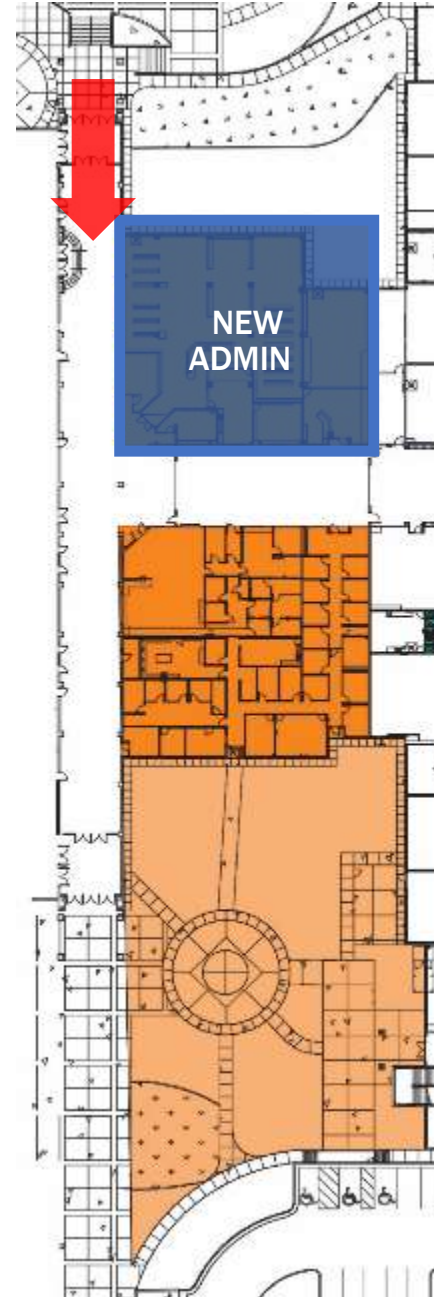
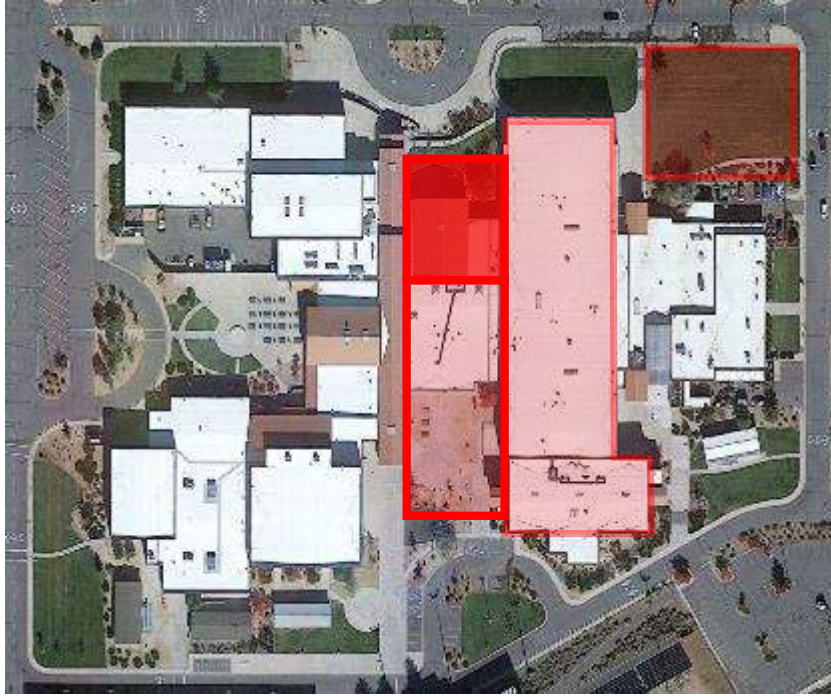
Expand to Include Outdoor Amphitheater & Student Event Space



Library



Secure Entry at New Administration Suite

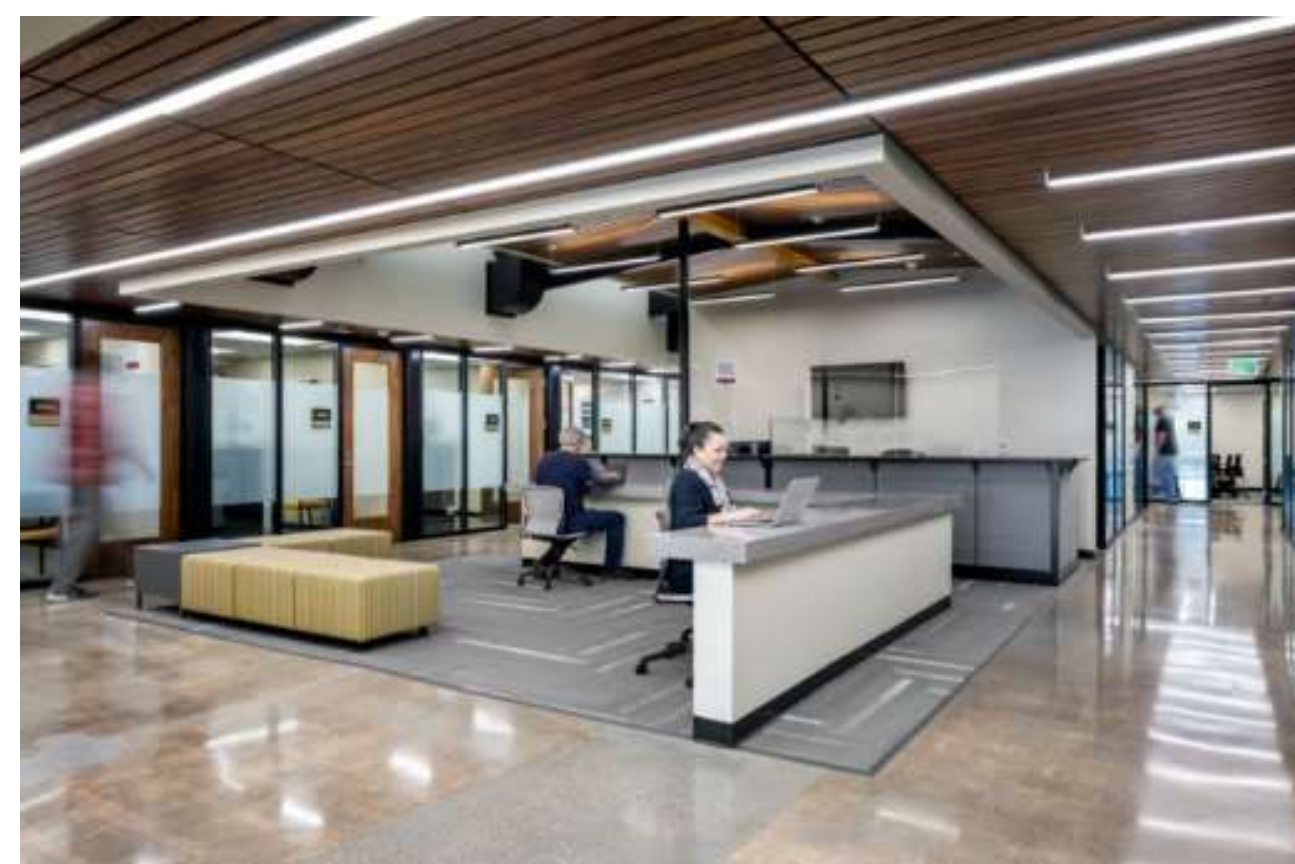


Generate New Campus Front Door Experience

Improve Wayfinding

Create Ease of Access - Counselors & Services

Improve Security & Single Point of Entry



C New High School Magnet Program on Cold Springs Campus



- Same as Option A, plus:
- Create new high-demand high school magnet program/s to be temporarily housed at the Cold Springs MS campus, relieving crowding at NVHS until residential growth resumes, triggering new Cold Springs area high school.
- Design the program focus (e.g. STEM, CTE, Sustainability, Visual and Performing Arts, Alternative Education, etc.) in collaboration with community stakeholders.
- Implement facility improvements at Cold Springs MS as necessary for the new program and to provide physical separation from middle school.
- Incorporate long term accommodations for the new magnet program into new high school design, and/or renovations at North Valleys HS.



One-Time Capital Cost / Annual Operational Cost

\$\$\$\$\$ / \$\$\$\$\$

Benefits

- Relieves crowding at North Valleys HS.
- Includes community in the design of a solution that will transfer into eventual new high school design.
- Creates new educational programs relevant to North Valleys communities and creates professional development opportunities for faculty.
- Makes use of existing 600+ surplus capacity at Cold Springs to solve short-term crowding at NVHS.
- Revitalization projects update older facilities with educational program and student support enhancements, such as STEM, Special Education, music, arts, outdoor learning, and security.

Challenges

- Requires facility renovations and operational planning to host two schools at Cold Springs.
- Additional transportation time and cost.
- Requires policy/plan for extra curricular programs like athletics and arts.



General
Maintenance
Renovation /
Revitalization



Reconstruction
New School



Grade
Reconfiguration
Consolidation /
Repurpose



New Program
Attendance
Re-Zoning

D North Valleys 9th Grade Center on Cold Springs Campus



- Same as Option A, plus:
- Develop new 9th grade center for all NVHS freshmen students (from both Cold Springs and O'Brien) to be temporarily housed at the Cold Springs MS campus, relieving crowding at NVHS until residential growth resumes, triggering new Cold Springs area high school.
- Implement facility improvements at Cold Springs MS as necessary for the 9th grade center and to provide physical separation from middle school.
- Incorporate long-term accommodations for eventual relocation of 9th grade in both the new high school design and North Valleys HS.



One-Time Capital Cost / Annual Operational Cost

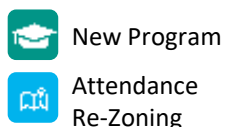
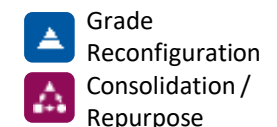
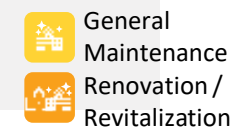
\$\$\$\$\$ / \$\$\$\$\$

Benefits

- Relieves crowding at North Valleys HS.
- Potential social development advantages for 9th graders off site from NVHS upperclassmen.
- Makes use of existing 600+ surplus capacity at Cold Springs to solve short-term crowding at NVHS.
- Revitalization projects update older facilities with educational program and student support enhancements, such as STEM, Special Education, music, arts, outdoor learning, and security.

Challenges

- O'Brien area 9th graders would be new on campus compared to Cold Springs 9th graders, potentially creating challenging transition.
- Solution would not transfer into eventual new high school design.
- Additional transportation time and cost.



E Stakeholder Developed Option

-
-
-
-
-
-

One-Time Capital Cost / Annual Operational Cost

\$\$\$\$\$ / \$\$\$\$\$

Benefits

-
-
-
-

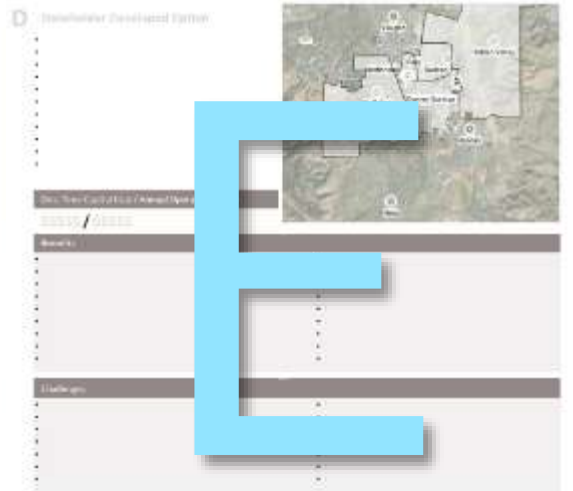
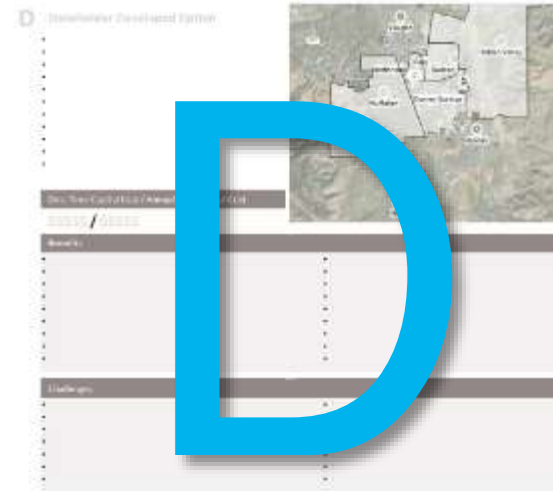
Challenges

-
-
-
-

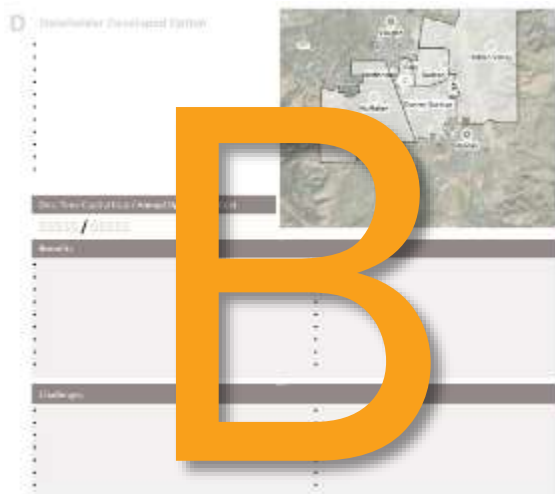


Draft Options for North Valleys-Area Schools

High School and Middle Schools



Elementary Schools



A Monitored Elementary Growth Under Current Operational Model



- Continue operating all elementary schools at existing sites.
- Implement prioritized maintenance, revitalization, and renovation projects at all schools.
- Monitor housing developments and enrollment projections for future elementary school and/or rezoning.

One-Time Capital Cost / Annual Operational Cost

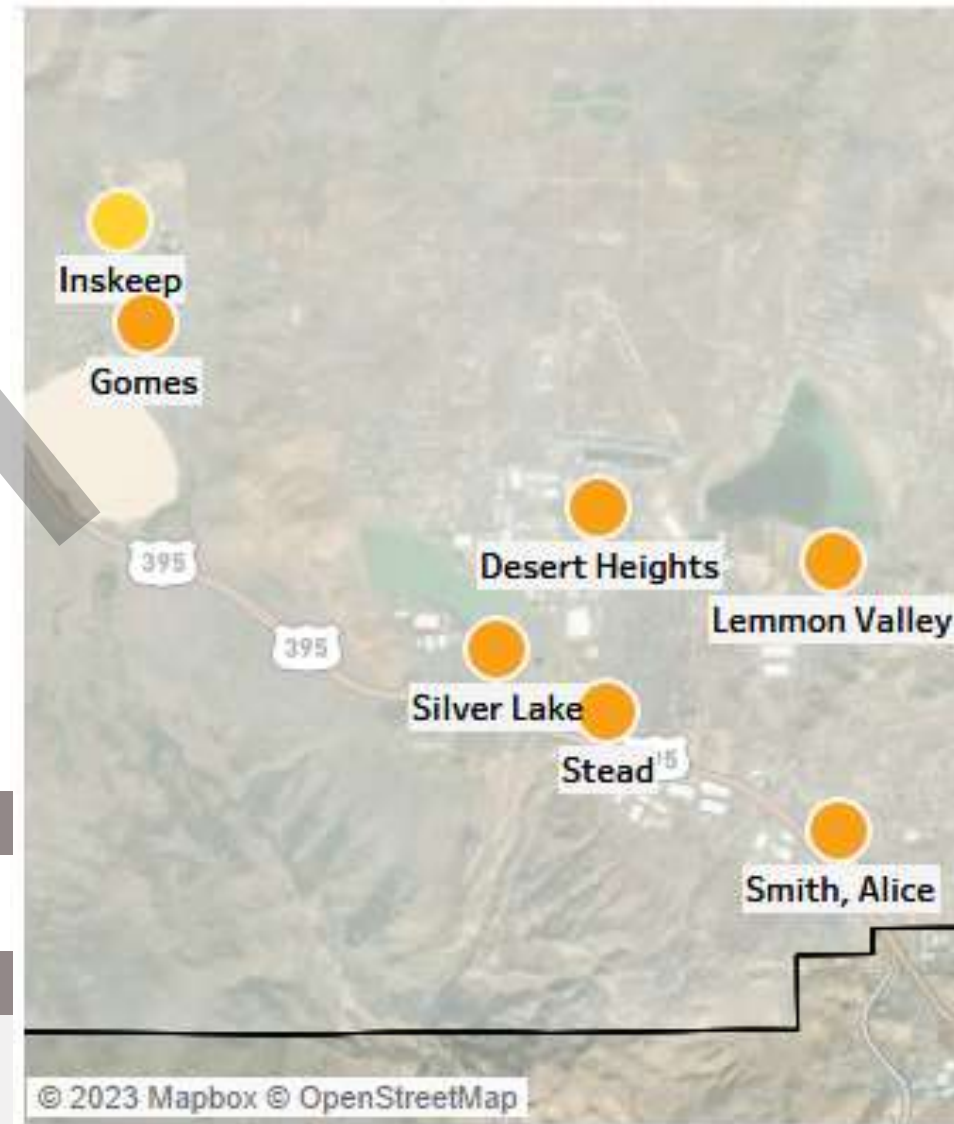
\$\$\$\$\$ / \$\$\$\$\$

Benefits

- Updates older facilities with educational and student support enhancements.

Challenges

- Moderate crowding at Lemmon Valley and Stead.



General
Maintenance
Renovation /
Revitalization



Reconstruction
New School



Grade
Reconfiguration
Consolidation /
Repurpose



New Program
Attendance
Re-Zoning

B New Stead and Lemmon Valley Reconstruction



- Phase 1: Construct new 750 capacity elementary school at WCSD-owned Silver Dollar Lane site near Stead.
- Phase 2: Vacate and reconstruct Lemmon Valley at 750 capacity, using new school as temporary swing space.
- Phase 3: Move Stead to new school and repurpose old Stead facilities for other beneficial educational and/or community use, such as Pre-K, business hub, recreation, staff development, and/or staff housing, etc.
- Implement prioritized maintenance, revitalization, and renovation projects at all other schools.
- Monitor housing developments and enrollment projections for future elementary school and/or rezoning.

One-Time Capital Cost / Annual Operational Cost

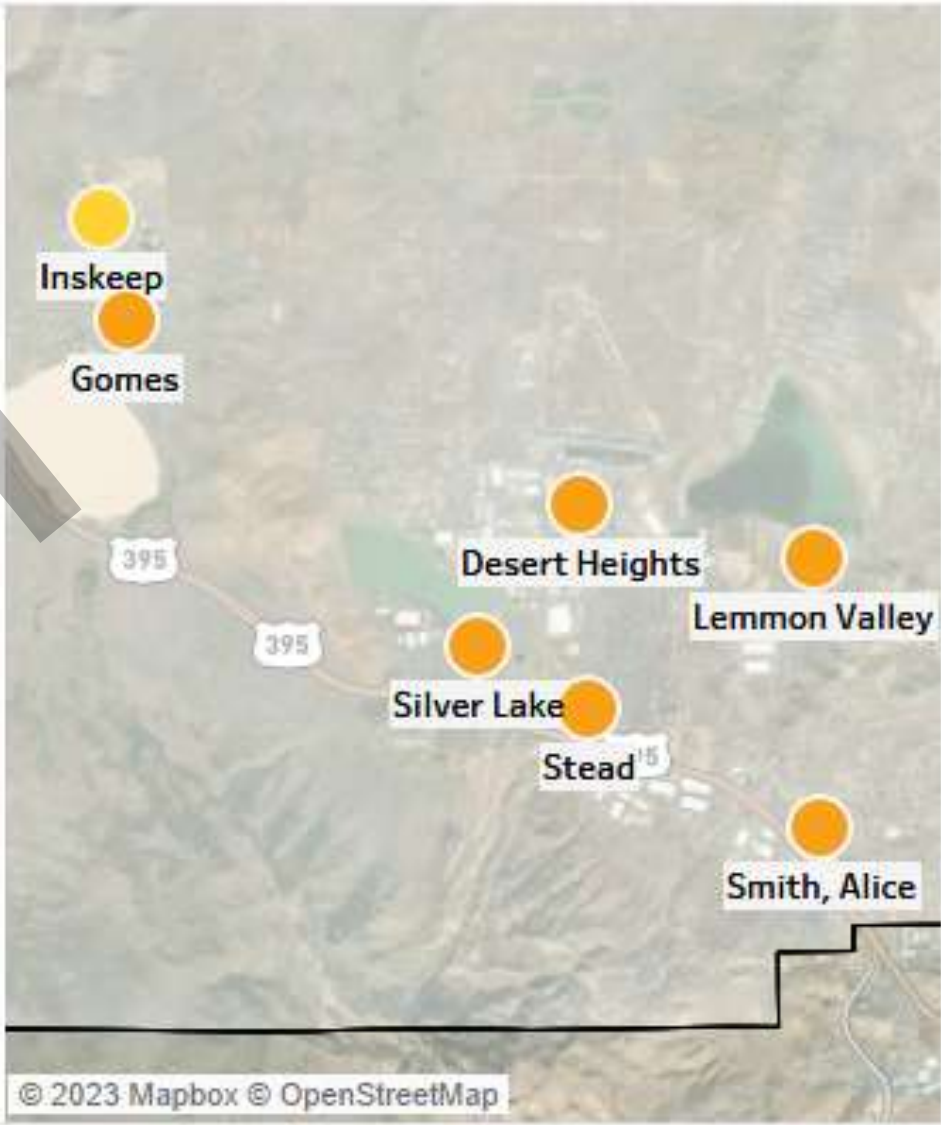
\$\$\$\$\$ / \$\$\$

Benefits

- Replaces the two oldest schools from the 1950s-1960s in North Valleys area.
- Phased plan with construction taking place on vacant sites improves safety, time, and construction cost.
- Relieves moderate crowding at Lemmon Valley and Stead.
- Updates older facilities with educational and student support enhancements.

Challenges

- For ~1-1.5 school years, Lemmon Valley would temporarily operate at Silver Dollar Lane, ~5 miles away during construction.



 General Maintenance
 Renovation / Revitalization

 Reconstruction
 New School

 Grade Reconfiguration
 Consolidation / Repurpose

 New Program
 Attendance Re-Zoning

C Stakeholder Developed Option

-
-
-
-
-
-

One-Time Capital Cost / Annual Operational Cost

\$\$\$\$\$ / \$\$\$\$\$

Benefits

-
-
-
-

Challenges

-
-
-
-



General
Maintenance



Renovation /
Revitalization



Reconstruction



New School



Grade
Reconfiguration



Consolidation /
Repurpose



New Program



Attendance
Re-Zoning

Conversation



Discussion Prompt

1. Elect a **note-taker** and **spokesperson/s** who will share ideas with the whole room.
2. Take turns **sharing your impressions** of each option, focusing on the stated **benefits** and **challenges** listed for each.
3. If you strongly support or oppose any of the options, are there any **additions/edits to the benefits or challenges** that would more fully explain your position?
4. Are there any 'yes, if' **adjustments, conditions, or qualifications** that would improve any of the options?
5. Do you have any ideas for **different options** that aren't listed?
6. **What have you learned** from others in the group?



Survey



CANNONDESIGN



Next Steps



Community Engagement

Community Forum Series 1: FMP Overview

- ✓ Sept 21, 5:30-6:15pm (virtual)
- ✓ Sept 22, 6:00 p.m., Desert Skies MS

Community Forum Series 2: Community Priorities

- ✓ Oct 19, 11:30am-1:30pm, McKinley Arts Center
- ✓ Oct 19, 5:30-7:30pm, Dilworth MS
- ✓ Oct 20, 5:30-7:30pm (virtual)

Community Forum Series 3: School Engagements

- April-Sept, multiple locations and dates

Community Forum Series 4: Improvement Options

- Aug-Oct, multiple locations and dates, TBA

www.washoeschools.net/fmp



Survey

Encuesta

CANNONDESIGN



<https://www.menti.com/al4ungr44qhb>