



WCSD Reopening

District Reopening Plan

August 8, 2020





A Message to the Community

Dear Washoe County School District Families,

On behalf of the Washoe County School District Board of Trustees and all of us at the District, we welcome you and your students back for another year of teaching and learning.

The 2020-2021 school year will look different from years past as we continue to confront challenges surrounding the COVID-19 pandemic. We want to assure you that our highest priority remains protecting the health and safety of our 64,000 students and more than 8,000 staff members. We are committed to providing the supports, guidance, and resources our children and families need to find success in school.

A large part of our commitment this year will revolve around social and emotional supports for our students. As we begin classes this year, we know that so many people in our community have been isolated and away from friends and school families who provide critical companionship during good times and bad. This type of support is so important for all of us, but especially for our children. Our teachers and staff members are eager to provide assistance and support as our students return to classes, even though those classes will be conducted a little differently this year, and

we will continue to focus on the social and emotional supports that are so crucial to the overall health of our children and their families.

We want to remind you that WCSD provides many options for learning, and our professionals stand ready to provide you with information and help as you make these important decisions for your children. Some may decide to engage in Distance Learning, while others may decide to send their students to our school sites. Please don't hesitate to reach out to your child's teacher or principal if you need further information or assistance as you consider these options.

Importantly, we are asking our parents and guardians to work in collaboration with schools and to be sure your children are following all directives and procedures that are put into place to keep our students and staff safe. We must have full compliance in following face covering mandates, social distancing, and hygiene. We must also have full compliance from our families to follow the self-screening protocols put into place for every morning before your child comes to school.

While many things have changed in the past few months, our educational mission has not: WCSD is ready to begin teaching and learning, and we look forward to welcoming you and your children back to our classrooms for the new school year. It's important to remember that we must remain flexible and adaptable, as the conditions surrounding this pandemic are constantly shifting. We are committed to working with medical professionals at the local and state level as we work together to make important decisions for our students, families, and staff members.

Welcome, and thank you for joining us as we begin another school year.

President Malena Raymond

WCSD Board of Trustees

Dr. Kristen McNeill

Superintendent, Washoe County School District



Table of Contents

4 | What to Expect as Schools Reopen

6 | Planning Considerations

- Guiding principles
- Approach and Summary
- Family Choice
- School Calendar Modifications
- Communication between District, Staff, and Families

8 | Health and Safety

- Self-screening
- Face coverings
- Physical Distancing
- Personal Hygiene Protocols
- Illness at School and COVID-19 Outbreaks
- Mental Wellness/Social Emotional Needs

13 | Operations

- Enhanced Cleaning
- Transportation
- Nutrition Services
- Outdoor Spaces

16 | Academics

- Learning Model Definitions
- Full Distance Learning
- Site-Based Distance Learning
- Full In-Person Learning
- Hybrid Learning
- Flexibility in Learning Delivery Model
- Student Devices and Internet
- Elementary School
- Middle School and High School
- Special Education
- Athletics

25 | Acknowledgments

28 | Resources



What to Expect As Schools Reopen

Before you come in

- Students in elementary school will attend school in person every day. Middle and High School students will be placed into teams and attend approximately half the week in person and the other half at home. Students should make sure they know their schedule and what days they're expected to be in the classroom. See pages 18-19.
- Students and staff are expected to use WCSD's self-screening tool daily to determine if they should come to school. See page 9.

On the school bus

- Drivers, Transportation Aides, and students will all be required to wear face coverings. See page 10.
- Drivers will disinfect the seats, doors, handrails, and other high touch areas in between uses.
- Students will sit at least three feet apart.
- Hand sanitizer will be made available for students and drivers to use upon entering and exiting the bus.
- Students at all grade levels will be assigned seating due to occupancy requirements.



**COMPLETE
SELF-SCREENING**



**STAY HOME
IF SICK**



**FACE COVERINGS
MANDATORY**

Arriving to School

- All students and staff will be required to wear their face coverings while in school buildings and on school district property. Practice wearing it at home so you're ready to wear it to school. See page 10.

Throughout the Day

- Students and staff will be required to keep their face coverings on throughout the day, unless they're eating or drinking.
- Students and staff should wash their hands frequently, with soap and warm water for at least 20 seconds. Hand sanitizer will also be made available.
- Students will maintain physical distance while in classrooms, hallways, and outside.
- Custodians will clean high touch areas and teachers and other staff will have access to a cleaning/disinfectant product that they can use to choose to keep their spaces clean throughout the day.
- Teachers and other staff will have access to a non-toxic soap/water based cleaning/disinfectant solution approved by the Washoe County Health District and disposable paper towels that they can use to choose to keep their spaces clean throughout the day.

Lunch Time

Schools will be providing meals in one of several ways, either in classrooms, at a mobile dining cart, or in the cafeteria to small groups of students at a time.

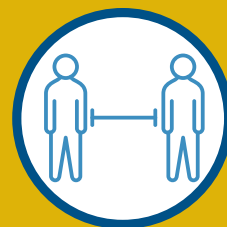
Drinking fountains will be used only to refill students' own water bottles. Hand sanitizer will be made available near the drinking fountain.

Recess

Recess is an important part of the day to socialize safely. Students will still have to take precautions by continuing to wear their face coverings and maintaining physical distance. Shared playground structures and equipment won't be utilized.

End of the Day

- For students riding the bus home, they'll keep their face coverings on until they're off the bus.
- Custodians will clean and disinfect the school and restrooms, especially the high touch surfaces, at the end of the day to prepare for the next morning.



**MAINTAIN SOCIAL
DISTANCE**



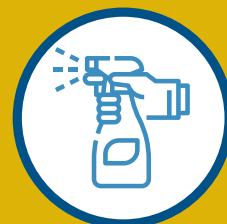
**WASH HANDS
FREQUENTLY**



**WEAR FACE
COVERING UNLESS
EATING OR DRINKING**



**AVOID
CROWDS**



**INCREASED
CLEANING**



Planning Considerations

As we plan for the reopening of school for the 2020-2021 school year, and the safe and healthy return of our students and staff, we expect significant changes influenced by continued management of the COVID-19 virus. Toward this end, we are working to create a safe, clear, predictable, and positive school experience for students, staff, and families.

Guiding Principles

We anticipate significant differences in comparison to the reopening of schools in years' past especially as federal, state, and county guidelines are limited and are changing rapidly. Because of this, and due to what is currently known about the virus and its spread, there is little choice but to plan conservatively while entertaining multiple possibilities. A key given is that we must remain flexible so that our school system can adapt to meet the needs of students, staff, and families.

To drive this response, key principles have been defined:

- All decisions are based on a foundation of "Do No Harm".
- We must ensure student, family, and staff basic needs are being met.
- We must ensure equitable access for all students.
- We must maintain high academic expectations for all students.

Approach and Summary

The Nevada Department of Education has required that all school districts in Nevada create three learning plans to be used during the 2020-2021 school year: full distance, full in-person, and a hybrid model. As the situation continues to change with COVID-19, school districts across the state may need to switch among these learning plans. The Washoe County School District has presented these plans to the Board of Trustees and has submitted them to the state.

On July 7, 2020, the Board of Trustees approved the use of an in-person plan at the elementary school level, and hybrid models at both the middle and high school levels. On July 28, 2020, WCSD presented further information about the distance learning model. The Board of Trustees reaffirmed their earlier decision.

Although the 2020-2021 school year will start with in-person and hybrid models, families and staff are asked to be flexible as learning models could change throughout the year. This plan presents information about all three models of learning and what families and staff can expect for each model. The Washoe County School District and Board of Trustees will review data from local, state, and federal health agencies, as well as guidance and directives from local, state, and federal government agencies to determine when and if the District will shift into different learning models.

Family Choice

Because WCSD understands that all students have different situations and needs, each family will have the choice to participate in full distance learning. Students can elect this option in a variety of ways:

- Students in Kindergarten through Grade 5 can remain enrolled in their zoned school and can work with their principal to participate in distance learning. This option can be selected prior to the school year beginning or after it has started, as long as the family gives the school at least two week's notice. Families will not be able to frequently switch back and forth from in-person and distance. Families are encouraged to speak with their schools to explore this option.
- Students in Grades 6 – 12 can remain enrolled in their zoned school and use the Edgenuity platform, as well as site based, teacher-supported teaching and learning, to participate in distance learning. This option can be selected prior to the school year beginning or after it has started, as long as the family gives the school at least two week's notice. Families will not be able to frequently switch back and forth from in-person and distance. Families are encouraged to speak with their schools to explore this option.
- Students in grades Kindergarten through 12th Grade were given an opportunity to unenroll from their zoned school and enroll in North Star Online School prior to the July 31 deadline. Families will have an opportunity to enroll prior to the spring semester. Mid-semester transfers will not be accepted.

Because WCSD understands that all students have different situations and needs, each family will have the choice to participate in full distance learning.

School Calendar Modifications

Student instruction, for those schools on the Balanced Calendar, will begin on August 17, 2020. This is one week later than originally planned in order to allow one week of professional learning for teachers and staff. There are a couple of schools with unique calendars. If you have questions, please contact your school.

Communication Between District, Staff, and Families

The Washoe County School District is taking every effort to communicate information and plans with our families and staff. All information is shared on our website at www.washoeschools.net/reopening and families and staff are encouraged to visit the site frequently for updates. The Superintendent has communicated with families and staff via email and telephone messages frequently throughout the pandemic and will continue to do so. Additionally, all reopening plans are discussed in public meetings of the Board of Trustees and the public has access to view these meetings and affiliated documents on our website.



Health and Safety

The health and safety of students, staff, and families is of utmost importance to WCSD. In order to best mitigate the spread of COVID-19 and to keep people safe in our buildings, the District will be utilizing a multi-layered approach that encompasses personal hygiene, physical distancing, and additional cleaning measures.

Self-Screening

All WCSD employees and students must make sure to self-screen before entering a WCSD facility. If an individual, or anyone in their household, is experiencing any COVID-19 symptoms, has tested positive for COVID-19, or is waiting for test results, then they should not enter a WCSD building. Students and staff are encouraged to use WCSD's self-screening tool every morning before coming into school, available at <https://www.washoeschools.net/selfscreening> or page 9 in this document.

All WCSD employees and students must make sure to self-screen before entering a WCSD facility.

Face Coverings

All WCSD employees and students of all ages must wear cloth face coverings when they are in WCSD buildings and on WCSD grounds. Face coverings can only be removed for eating and drinking. If students and staff want to bring their own face coverings, they can; otherwise WCSD will provide face coverings to each student and staff member.

Face coverings must be worn over both the nose and mouth and should fit snugly against the face. We know this is new to many of our students and staff and we urge everyone to practice wearing their face covering prior to the school year. See page 10.

As per the Governor's directive 028 (<https://bit.ly/33ybhQC>), students and staff may ask for a medical exemption from wearing a mask. To do so, they should talk to their doctor and their principal or supervisor.



COVID-19 Daily Self-Screening Tool

**For the health and well-being of those around you,
ASK these questions EVERY DAY BEFORE leaving home.**

Have you or has anyone in your household had any of these symptoms in the last 24 hours?

- ❶ **New/worsening respiratory symptoms***
(cough and/or shortness of breath)
- ❷ **Vomiting and/or diarrhea**
- ❸ **Fever** (temperature of $>100.4^{\circ}\text{F}$ at rest)
- ❹ **Loss of smell or taste***
- ❺ **Two or more of these symptoms*:**
 - sore throat
 - chills
 - abdominal pain
 - headache
 - nasal congestion
 - fatigue
 - muscle pain or body aches

* New symptoms are different than symptoms of ongoing health issues such as asthma, allergies, reflux, or COPD.

IF you or anyone in your household:

- ❶ Is **WAITING** for COVID-19 test results,
- ❷ Is **DIAGNOSED** with COVID-19 by **TESTING POSITIVE**,
- ❸ Is **DIAGNOSED** with COVID-19 by a healthcare provider but is **NOT TESTED**,
- ❹ Has been told by **WCHD to ISOLATE**, or
- ❺ Has **SYMPTOMS** (above), has **NOT SEEN** a healthcare provider, has **NOT BEEN TESTED**, and is monitoring symptoms at home,

Have you been in close contact
(within 6 feet for more than 15 minutes)
with a person who has been diagnosed with COVID-19 while the person was contagious
(48 hours before symptoms began through recovery)?

If you answer YES to any of these:

- ▶ **Do NOT go to school/work.**
You and everyone in your home should isolate at home until cleared to return to school/work.
- ▶ **Contact your school/supervisor.**
- ▶ **Call your healthcare provider or Washoe County Health District (WCHD) COVID-19 Hotline at (775) 328-2427.**

If you answer NO to all of these:

- ▶ **Go to school/work.**
- ▶ **Continue to monitor your health.**

You or someone in your household has or may have COVID-19:

- ▶ **Do NOT go to school/work.**
- ▶ **Communicate** with your school/supervisor.
- ▶ **Visit WCHD online for information:**
covid19washoe.com/self-isolation-quarantine
- ▶ **The COVID-19 patient must ISOLATE at home until recovered**, defined as:
 - (1) **at least 10 days have passed since the first symptom**, AND
 - (2) **24 hours have passed since fever, vomiting, AND diarrhea stopped** (without medicine), AND
 - (3) **other symptoms have improved.**
- ▶ **Everyone in the household**, who has not had COVID-19, must **ISOLATE at home until**
 - (1) **the patient has recovered** (see above), AND
 - (2) **14 days have passed since the last recovery.**

You have been exposed to COVID-19:

- ▶ **Do NOT go to school/work.**
- ▶ **Communicate** with your school/supervisor.
- ▶ You must **QUARANTINE at home for 14 days.**
- ▶ If, at any point, you develop symptoms, **ISOLATE and call WCHD COVID-19 Hotline at (775) 328-2427.**

If you have other COVID-19 related questions, contact the WCHD COVID-19 Hotline at (775) 328-2427.

Washoe County School District | 8-3-2020



WCSD Reopening

How to Safely Wear and Take Off a Cloth Face Covering

A face covering should fit snugly and entirely cover your mouth and nose.

Wearing a Face Covering



Wash your hands before putting on your face covering. Put it over your nose and mouth and secure it under your chin. Try to fit it snugly against the sides of your face. Make sure you can breathe easily. Don't put the covering around your neck or up on your forehead. Don't touch the face covering, and, if you do, clean your hands. Do not place a mask on a child younger than 2.

Removing a Face Covering



Untie the strings behind your head or stretch the ear loops. Handle only by the ear loops or ties. Fold outside corners together. Wash your face covering after each use. Wash your hands with soap and water.

Face Coverings (continued)

Staff are exempt only if they have a documented medical vulnerability that would be exacerbated by wearing a cloth face covering on file with their employer, or they can produce documentation from a medical professional and receive approval for the exemption from their supervisor. For more information about face coverings, see the WCSD Guidance on Face Coverings, available to download at <https://www.washoeschools.net/Page/15094>

Students are also exempt only if they have a medical vulnerability that would be exacerbated by wearing a cloth face covering documented in an existing Individualized Education Program (IEP) or 504 plan, or they produce documentation from a medical professional and receive approval for the exemption from the principal.

Visitors to WCSD buildings are discouraged at this time, however if a visitor needs to come into a building they are required to wear a face covering. Visitors who refuse to wear a face covering will not be allowed into any WCSD buildings or grounds.

Physical Distancing

The use of physical distancing can help stop the spread of COVID-19. Thus, students and staff in WCSD buildings and grounds will be expected to practice physical distancing. Students in Pre-Kindergarten through Grade 5 will be maintaining three feet of physical distance, as per Governor's Directive 028 (<https://bit.ly/33ybhQC>). Students at the middle and high school level, as well as staff in all WCSD buildings, will be required to maintain six feet of physical distancing. There may be times when teachers and students need to interact closer than the recommended three or six feet (such as if a student needs help with hand washing or hand sanitizer). These interactions should be brief and kept at no more than 15 minutes to limit exposure.

Classrooms will be arranged so that student desks will be distanced per Governor's Directive 028 (<https://bit.ly/33ybhQC>). While students walk through common areas and hallways, they will be directed to maintain physical distancing at all times. Traffic flow through busy areas, such as bathrooms and water fountains, will be monitored to ensure students are staying apart.

All WCSD employees and students of all ages must wear cloth face coverings when they are in WCSD buildings and on WCSD grounds. Physical distancing guidelines will be followed as well as enhanced cleaning.

Enhanced Hygiene Protocols

Students will be encouraged to wash their hands several times throughout the day with warm water and soap for at least 20 seconds. Staff should also maintain good hygiene and wash their hands frequently.

Hand sanitizer will be made available in every classroom for students and staff to use throughout the day, but should only be used when it is not possible to wash hands in warm, soapy water. If hand sanitizer is used, hands should still be washed in warm, soapy water when it is reasonable to do so.

Illness at School and COVID-19 Outbreaks

WCSD is working with the Washoe County Health District on protocols for handling students who may become ill at school and exclusions for when students and staff must remain home from school. For updated information about these protocols, please view the Outbreak Plan, available to download at <https://www.washoeschools.net/reopening>



Mental Wellness/Social Emotional Needs

WCSD understands that this is a challenging time for many of our students, families, and staff. Students experiencing difficulties should reach out to their school counselor for assistance. Staff are encouraged to talk with their supervisors and/or utilize the Employee Assistance Program, Guidance Resources, www.guidanceresources.com, through the District health insurance.

Additional resources can be found through the Social and Emotional Learning Department and the Department of Multi-Tiered Systems of Support. See <https://www.washoeschools.net/Page/15069> and <https://www.washoeschools.net/Page/15065> for Social Emotional Learning and additional resources.



Operations

The operation of WCSD schools in 2020-2021 will look and feel different from previous years. As part of the multi-layered approach to keeping our students and staff safe and healthy, additional measures will be taken to make the operation of our schools safer. This includes enhanced cleaning on facilities and buses, and a different model for providing meals to students.

Enhanced Cleaning

WCSD custodians will be disinfecting high touch surfaces every evening, such as tabletops, desks, chairs, light switches, sink faucets, and door handles, for example. There may be reduced groundskeeping or vacuuming services in order to best prioritize the custodians' time and allow them to focus on the high touch areas.

In addition, classrooms will be provided with access to a non-toxic soap/water based cleaning/disinfectant solution approved by the Washoe County Health District and disposable paper towels so that other adults in the school might choose to disinfect their spaces even more frequently.

Ventilation in all WCSD buildings and portable classrooms has been adapted to increase the amount of fresh air intake and continuous circulation.

Additional Hygiene Products

All schools and WCSD buildings have been supplied with additional hygiene products in advance of the 2020-2021 school year beginning. This includes more than 4,500 bottles of hand sanitizer that have been delivered to every classroom and increased soap availability at hand washing stations.

As part of the multi-layered approach to keeping our students and staff safe and healthy, additional measures will be taken to make the operation of our schools safer.



Transportation

School buses will not be operated in the same way as years past. First each bus will be filled to only 50% capacity (45 students or less) in order to allow for three feet of physical distancing, as per Governor's Directive 028 (<https://bit.ly/33ybhQC>).

School buses will have more trips to make given the reduced capacity. There will be staggered drop off and pick up times for students at some schools. If a staggered pick up or delivery is required, some students will arrive to school and have to wait at the school for a period of time before the bell rings so the bus can go back and pick up other students to bring to school before the bell time. In the afternoon some students will need to wait at school while the bus delivers a group of students to their home stops and then returns to pick up the second group.

Face coverings are required for all students, the driver, and transportation aides and must be worn at all times on the school bus. Hand sanitizer will also be made available for students to use when entering and exiting the bus.

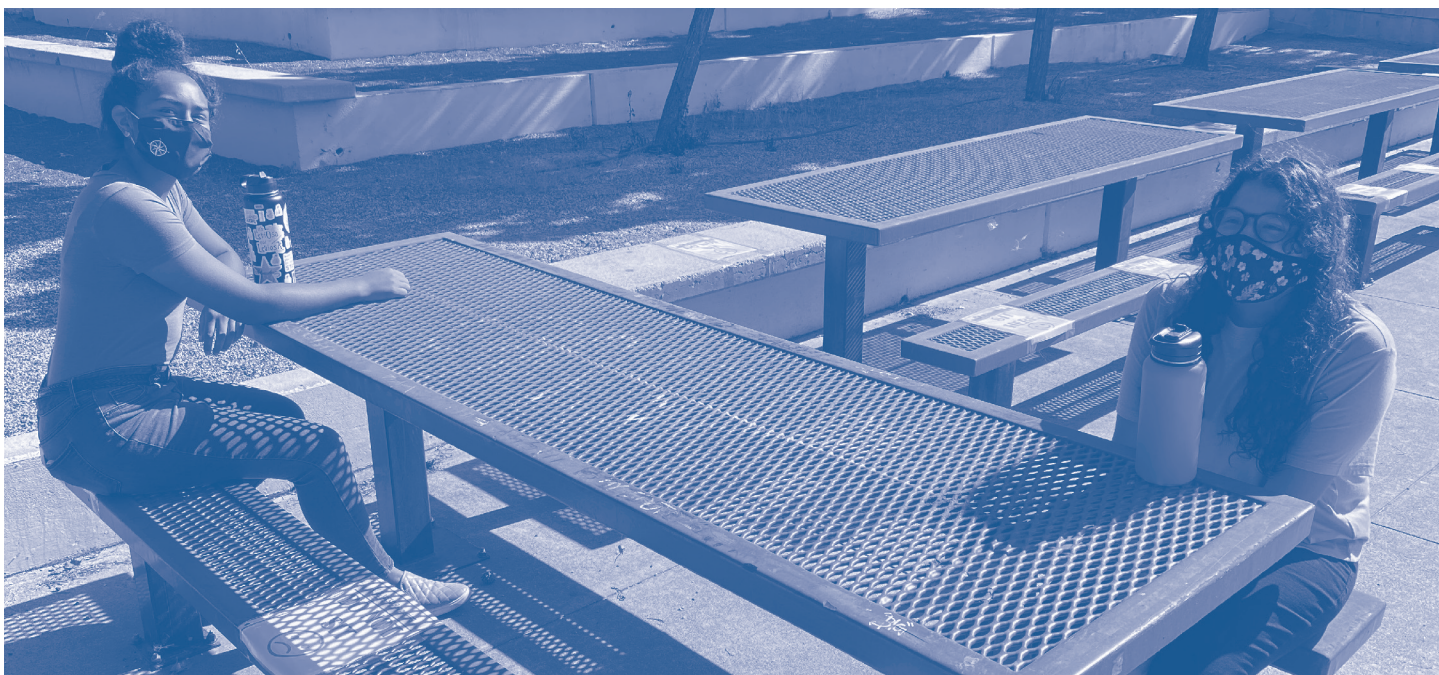
Buses will be cleaned and disinfected before and after each route. In addition, bus drivers will disinfect high touch areas such as handles, doors, and seats in between each group of students on the same route. Windows, roof hatches, and air vents will be opened to provide enhanced flow of fresh air.

Students at all grade levels will be assigned seating due to occupancy requirements and to minimize student contact while loading and unloading on the bus and during ride times.

Due to the occupancy requirements, transportation registration is required to ensure that eligible students will be assigned on a bus for the first day of school. The registration form can be located on the Transportation website, under School Bus Registration: <https://www.washoeschools.net/Domain/73>.

Students are encouraged to maintain physical distancing at bus stops.

Each bus will be filled to only 50% capacity (45 students or less) in order to allow for three feet of physical distancing.



Nutrition Services

WCSD Nutrition services has developed several meal options in order to keep students and staff safe. Depending on what each specific school site needs, meal services will be one or a combination of the following service models:

- Modified Café Service - This meal service option would have students come through our traditional serving lines, at staggered times, and take meals back to a designated area for consumption.
- Mobile Dining Cart Service - This option would strategically place mobile service carts throughout campus and serve prepackaged options for eating in the classroom or other designated area.
- Classroom Delivery Service - This will be used at about 40 schools which already have the equipment needed to execute this and will involve meal delivery to the classrooms.
- Meals To-Go Service- Families participating in distance learning, either every day or through a hybrid model, will be able to pick up prepackaged multi-day meals from specific sites throughout the District.

Outdoor Spaces

Recess helps students practice social skills such as following rules, problem solving, negotiating, cooperation, and communicating. Recess can give kids and staff a chance to spend time outside and have in-person social connections — something many have been missing during recent months — while maintaining appropriate physical distance.

Students will be required to wear their face coverings and maintain physical distancing during outside time. Shared playground structures and equipment will not be utilized and the number of students out at recess at any given time will be kept to under 50. School staff are encouraged to keep students physically distanced while walking to and from the playground.

- For more information about outdoor spaces and COVID-19, please see our Recess Guidance available to download at <https://www.washoeschools.net/Page/15094>.



Academics

As we embark on the 2020-2021 school year, we are striving to make sure all students will have the opportunity to learn and be challenged. While the school year may look different than in years past, the education of our 64,000 students is our highest priority.

As required by the Nevada Department of Education, WCSD has submitted three learning plans to the state: distance learning, in-person learning, and hybrid learning. Each of these models will be defined below.

Learning Model Definitions

Full Distance Learning

This learning model provides instruction via a distance method and will be used in a variety of scenarios:

- In the event of a student, or group of students, being excluded from school due to suspected or confirmed COVID-19 exposure, that student, or group of students, would participate in distance learning.
- In the event a school is temporarily shut down due to outbreak, then all students in that school would participate in distance learning.
- In the event the entire district is temporarily shut down due to outbreak, then all WCSD students would participate in distance learning.

All students will have the opportunity to learn and be challenged, whether they are learning at school in person, through distance learning or the hybrid learning model.

Additionally, families may choose to participate in full distance learning in the following ways:

- Students in Kindergarten through Grade 5 can remain enrolled in their zoned school and can work with their principal to participate in distance learning. This option can be selected prior to the school year beginning or after it has started, as long as the family gives the school at least two week's notice. Families will not be able to frequently switch back and forth from in-person and distance. Families are encouraged to speak with their schools to explore this option.
- Students in Grades 6 – 12 can remain enrolled in their zoned school and use the Edgenuity platform, as well as site based, teacher-supported teaching and learning, to participate in distance learning. This option can be selected prior to the school year beginning or after it has started, as long as the family gives the school at least two week's notice. Families will not be able to frequently switch back and forth from in-person and distance. Families are encouraged to speak with their schools to explore this option.
- Students in grades Kindergarten through 12th Grade were given an opportunity to unenroll from their zoned school and enroll in North Star Online School prior to the July 31 deadline. Families will have an opportunity to enroll prior to the spring semester. Mid-semester transfers will not be accepted.

If a family chooses to participate in distance learning through their zoned school, students can expect new standards-based instruction. Each school will establish its own distance learning program, allowing for each principal to develop a plan that works for their school community.

The site-based Distance Learning option will use District approved curriculum and materials, but will be taught in a manner chosen by each school, using online platforms such as Microsoft Teams or the use of paper assignments for students who do not have devices at this time. For online learning, students will access distance learning via a device that will allow them to engage with their teacher both synchronously and asynchronously including direct lessons, independent study, and virtual collaboration with other students. Distance Learning lessons will be made available via paper for students who do not have devices. Teachers are receiving professional learning in the use of Teams and the ability to support students at home, and will receive an additional five days of professional learning before the school year starts.

Each school will establish its own distance learning program, allowing for each principal to develop a plan that works for their school community.

Hybrid Learning

A hybrid learning model is one that combines elements of both in-person learning and distance learning. This learning model will be used in the following scenarios:

- If space and staffing do not allow for physical distancing to be maintained for full-time in-person learning but can be met by having students split their attendance between in-person and at-home.

The WCSD hybrid learning model splits students into Team A and Team B. Team A will attend school in-person two or three days a week, while Team B receives Distance Learning. On the opposite days, the teams will switch. This method allows students to physically distance. See pages 18-19.



Attendance Group A -- 2020-2021 Balanced Calendar

Attendance Group A has in person learning on purple days and distance learning on white days

July 2020							No School on Shaded Days
S	M	T	W	TH	F	S	# of School Days = 0
			1	2	3	4	
5	6	7	8	9	10	11	
12	13	14	15	16	17	18	
19	20	21	22	23	24	25	
26	27	28	29	30	31		

January 2021							No School on Shaded Days
S	M	T	W	TH	F	S	# of School Days = 19
					1	2	January 1st: New Year's Day
3	4	5	6	7	8	9	January 4th: School Resumes
10	11	12	13	14	15	16	
17	18	19	20	21	22	23	January 18th: Martin Luther King Jr. Day
24	25	26	27	28	29	30	
31							

August 2020							No School on Shaded Days
S	M	T	W	TH	F	S	# of School Days = 16
						1	August 4th: First Day for Teachers
2	3	4	5	6	7	8	August 4-6th: Teacher Professional Development
9	10	11	12	13	14	15	August 7th: Teacher Work Day
16	17	18	19	20	21	22	August 10-14: Teacher Professional Development Non Student Days that Count as Days in Session*
23	24	25	26	27	28	29	August 17th: First Day of School
30	31						August 17th-21st: Kindergarten Testing
							August 24th: First Day of Kindergarten

February 2021							No School on Shaded Days
S	M	T	W	TH	F	S	# of School Days = 19
	1	2	3	4	5	6	
7	8	9	10	11	12	13	February 15th: President's Day
14	15	16	17	18	19	20	February 23rd: ACT Testing
21	22	23	24	25	26	27	February 22-26: Conference Week
28							*Spring Conference Week for some schools
							Please check with your school for details

September 2020							No School on Shaded Days
S	M	T	W	TH	F	S	# of School Days = 21
		1	2	3	4	5	September 7th: Labor Day
6	7	8	9	10	11	12	
13	14	15	16	17	18	19	
20	21	22	23	24	25	26	
27	28	29	30				

March 2021							No School on Shaded Days
S	M	T	W	TH	F	S	# of School Days = 13
	1	2	3	4	5	6	
7	8	9	10	11	12	13	March 12th: End of Grading Period
14	15	16	17	18	19	20	March 15th - 26th: Spring Break
21	22	23	24	25	26	27	
28	29	30	31				

October 2020							No School on Shaded Days
S	M	T	W	TH	F	S	# of School Days = 16
				1	2	3	October 5th - 9th: Fall Break
4	5	6	7	8	9	10	October 16th: End of Grading Period
11	12	13	14	15	16	17	October 19th-23: Conference Week
18	19	20	21	22	23	24	October 30th: Nevada Day Observed
25	26	27	28	29	30	31	

April 2021							No School on Shaded Days
S	M	T	W	TH	F	S	# of School Days = 22
				1	2	3	
4	5	6	7	8	9	10	
11	12	13	14	15	16	17	
18	19	20	21	22	23	24	
25	26	27	28	29	30		

November 2020							No School on Shaded Days
S	M	T	W	TH	F	S	# of School Days = 17
1	2	3	4	5	6	7	November 3th: * Professional Development
8	9	10	11	12	13	14	November 11th: Veterans Day
15	16	17	18	19	20	21	
22	23	24	25	26	27	28	November 25th - 27th: Thanksgiving Break
29	30						

May 2021							No School on Shaded Days
S	M	T	W	TH	F	S	# of School Days = 20
						1	
2	3	4	5	6	7	8	
9	10	11	12	13	14	15	
16	17	18	19	20	21	22	
23	24	25	26	27	28	29	May 31st: Memorial Day
30	31						

December 2020							No School on Shaded Days
S	M	T	W	TH	F	S	# of School Days = 13
		1	2	3	4	5	December 17th: End of Grading Period
6	7	8	9	10	11	12	December 18th: Teacher Work Day
13	14	15	16	17	18	19	Winter Break: Dec.21-Jan.1st
20	21	22	23	24	25	26	
27	28	29	30	31			

June 2021							No School on Shaded Days
S	M	T	W	TH	F	S	# of School Days = 4
		1	2	3	4	5	June 4th: End of Grading Period
6	7	8	9	10	11	12	June 4th: Last Day of School
13	14	15	16	17	18	19	June 7th, 8th, & 9th: Contingency Days
20	21	22	23	24	25	26	June 7th and 9th will be Attendance days if contingency days are used.
27	28	29	30				

*8/10-14/20 and 11/3/20 will be counted as a day in session

Number of Days Per Quarter	44	39	48	49	180
Number of Days Per Semester	83		97		180
Contingency Days: June 7,8,9					

Teacher Work Days: August 4-7, December 18
Day in Session Teacher Professional Dev. August 10-14, November 3



Attendance Group B -- 2020-2021 Balanced Calendar

Attendance Group B has in person learning on the red days and distance learning on the white days

July 2020							No School on Shaded Days
S	M	T	W	TH	F	S	# of School Days = 0
			1	2	3	4	
5	6	7	8	9	10	11	
12	13	14	15	16	17	18	
19	20	21	22	23	24	25	
26	27	28	29	30	31		

January 2021							No School on Shaded Days
S	M	T	W	TH	F	S	# of School Days = 19
					1	2	January 1st: New Year's Day
3	4	5	6	7	8	9	January 4th: School Resumes
10	11	12	13	14	15	16	
17	18	19	20	21	22	23	January 18th: Martin Luther King Jr. Day
24	25	26	27	28	29	30	
31							

August 2020							No School on Shaded Days
S	M	T	W	TH	F	S	# of School Days = 16
						1	August 4th: First Day for Teachers
2	3	4	5	6	7	8	August 4-6th: Teacher Professional Development
9	10	11	12	13	14	15	August 7th: Teacher Work Day
16	17	18	19	20	21	22	August 10-14: Teacher Professional Development Non Student Days that Count as Days in Session*
23	24	25	26	27	28	29	August 17th: First Day of School
30	31						August 17th-21st: Kindergarten Testing
							August 24th: First Day of Kindergarten

February 2021							No School on Shaded Days
S	M	T	W	TH	F	S	# of School Days = 19
		1	2	3	4	5	6
7	8	9	10	11	12	13	February 15th: President's Day
14	15	16	17	18	19	20	February 23rd: ACT Testing
21	22	23	24	25	26	27	February 22-26: Conference Week
28							*Spring Conference Week for some schools
							Please check with your school for details

September 2020							No School on Shaded Days
S	M	T	W	TH	F	S	# of School Days = 21
		1	2	3	4	5	September 7th: Labor Day
6	7	8	9	10	11	12	
13	14	15	16	17	18	19	
20	21	22	23	24	25	26	
27	28	29	30				

March 2021							No School on Shaded Days
S	M	T	W	TH	F	S	# of School Days = 13
	1	2	3	4	5	6	
7	8	9	10	11	12	13	March 12th: End of Grading Period
14	15	16	17	18	19	20	March 15th - 26th: Spring Break
21	22	23	24	25	26	27	
28	29	30	31				

October 2020							No School on Shaded Days
S	M	T	W	TH	F	S	# of School Days = 16
				1	2	3	October 5th - 9th: Fall Break
4	5	6	7	8	9	10	October 16th: End of Grading Period
11	12	13	14	15	16	17	October 19th-23: Conference Week
18	19	20	21	22	23	24	October 30th: Nevada Day Observed
25	26	27	28	29	30	31	

April 2021							No School on Shaded Days
S	M	T	W	TH	F	S	# of School Days = 22
				1	2	3	
4	5	6	7	8	9	10	
11	12	13	14	15	16	17	
18	19	20	21	22	23	24	
25	26	27	28	29	30		

November 2020							No School on Shaded Days
S	M	T	W	TH	F	S	# of School Days = 17
1	2	3	4	5	6	7	November 3th: * Professional Development
8	9	10	11	12	13	14	November 11th: Veterans Day
15	16	17	18	19	20	21	
22	23	24	25	26	27	28	November 25th - 27th: Thanksgiving Break
29	30						

May 2021							No School on Shaded Days
S	M	T	W	TH	F	S	# of School Days = 20
						1	
2	3	4	5	6	7	8	
9	10	11	12	13	14	15	
16	17	18	19	20	21	22	
23	24	25	26	27	28	29	May 31st: Memorial Day
30	31						

December 2020							No School on Shaded Days
S	M	T	W	TH	F	S	# of School Days = 13
		1	2	3	4	5	December 17th: End of Grading Period
6	7	8	9	10	11	12	December 18th: Teacher Work Day
13	14	15	16	17	18	19	Winter Break: Dec.21-Jan.1st
20	21	22	23	24	25	26	
27	28	29	30	31			

June 2021							No School on Shaded Days
S	M	T	W	TH	F	S	# of School Days = 4
		1	2	3	4	5	June 4th: End of Grading Period
6	7	8	9	10	11	12	June 4th: Last Day of School
13	14	15	16	17	18	19	June 7th, 8th, & 9th: Contingency Days
20	21	22	23	24	25	26	June 8th is a B attendance day if contingency days are used.
27	28	29	30				

*8/10-14/20 and 11/3/20 will be counted as a day in session

Number of Days Per Quarter	44	39	48	49	180
Number of Days Per Semester	83		97		180
Contingency Days: June 7,8,9					

Teacher Work Days: August 4-7, December 18
Day in Session Teacher Professional Dev. August 10-14, November 3



Full In-Person Learning

This learning model will allow students to be back in school full-time and will be used in the following scenarios:

- If space and staffing permits and allows for the adherence of physical distancing guidelines.
- For students who are part of a vulnerable group, such as students receiving special education services, newcomers in the English Learner program, refugee students, students in foster care and children in transition, and students in Gifted and Talented programs. These students will have the option to attend school full time in person.

In-person learning requires safety measures and compliance with local and state health directives including mandatory use of face coverings, physical distancing, use of personal protective equipment (PPE), restrictions to close contact activities, and enhanced cleaning and hygiene protocols.

Family Choice Between Learning Models

Students who wish to participate in Distance Learning through their zoned school or through Edgenuity are encouraged to speak with their principals or counselors as soon as possible prior to the beginning of the school year. Though families will have the option to switch between distance and in-person learning throughout the year, they must give schools at least two weeks advance notice prior to a switch and they cannot go back and forth between models.

If a student wishes to change from distance learning to in-person, the parent/guardian must notify the school administration in writing at least two weeks before the intended date of return to in-person learning. This time is needed to plan for the safe return of the student to the school building. While the request to move to in-person learning is being processed, the student will continue learning in their distance learning platform.

If a student is excluded from school because of illness, they will immediately be placed into Distance Learning. See our website for detailed Outbreak Plan.

www.washoeschools.net/reopening

If a student wishes to move from in-person to distance learning, the parent/guardian must also notify the school administration in writing two weeks before the intended date of starting distance learning so that the school site can prepare the student/curriculum for distance learning. If the parent/guardian chooses to have their child stay home immediately and the student is in middle or high school, the child can continue with their at home learning on their hybrid schedule and then check in with school staff on their in-person day. For elementary school, until full distance learning is started, the elementary school should prepare work for the child to complete at home as with any reported absence.

Schools may be able to move faster than the two weeks, but will not take longer than two weeks to get the student settled into the new learning model.

If a student is excluded from school because of illness, they will immediately be placed into distance learning. Download the WCSD/WCHD Outbreak Plan at <https://www.washoeschools.net/reopening> for more details about how the exclusion process works.

Attendance

Regardless of the learning model, attendance will be taken every day.

For students participating in person either full time or in a hybrid model, attendance will be taken based on their physical presence in class.

For students participating in distance learning, either full time or in a hybrid model, students will be marked as present if they participate in:

- An online class session,
- An online assignment,
- An online discussion,
- An online check in through Infinite Campus assigned by the teacher,
- Completes an assignment which is returned to the teacher, or
- Has a conversation with the teacher electronically or otherwise about progress in the course.

As we progress through the 2020-2021 school year, each of these learning models may be used at any given time.

For more information about the changes made to WCSD's attendance policy because of COVID-19, please download it from the attendance webpage at <https://www.washoeschools.net/Page/8789>.

Flexibility in Learning Model Delivery

As we progress through the 2020-2021 school year, each of these learning models may be used at any given time. The decision has been made by the Board of Trustees to start the school with elementary schools following the in-person learning model, and middle and high schools following the hybrid learning model. Families can choose distance learning.

Throughout the year, there may be instances where a particular school or classroom is forced to close because of a COVID-19 outbreak at the location. In this case, that group of students will be able to transition into a site-based distance learning model. There may also be instances, based on direction from the Board of Trustees, Superintendent, local, state, and federal health agencies, that the entire District has to close its buildings to students and staff and transition everyone to a distance learning model.



Student Devices and Internet

WCSD has been partnering with the Nevada Department of Education and other districts to work on closing the gap so that all students have access to technology to assist with Distance Learning.

Presently, 4,000 student devices have been ordered with priority to distribute to students who do not have any device in their residence. We recognize that this number does not reach our 1:1 goal including 7,000 students that have a laptop or desktop at their residence but are not able to consistently utilize it. We will continue to work with local and state partners to reach our 1:1 goal.

To address internet, the Department of Information Technology has ordered and received 25 portable Kajeet Smart Bus units. The units provide 60-person usage capacity with a 300-foot radius of the bus. Buses will be able to travel to the most in need areas of Washoe County to provide internet access to our families. To further mitigate lack of internet access, we have received 3,000 HotSpots units from T-Mobile and have another 3,000 on the way. Each of these units will be given to families with no internet access prioritizing families with no internet access and outside of bus travel areas.

Elementary School

The 2020-2021 school year will begin with elementary school students receiving in-person learning Monday through Friday at their zoned school. Schools will take safety precautions and academic curriculum will be based on Nevada Academic Content Standards.

Middle and High Schools

The 2020-2021 school year will begin with middle schools and high schools following a hybrid learning model. Enrolled students will attend school in a "A/B Rotation Schedule" format with approximately half of their instruction to be in-person and half with distance learning. See pages 18-19.

The hybrid model allows middle and high schools to maintain a master schedule that will allow students to participate in all of their courses. The curriculum utilized on distance learning days will be developed by each school and will flow smoothly with the in-person learning days.

Expectations and Responsibilities

WCSD realizes that the 2020-2021 school year presents unique challenges to our staff, students, and families and we appreciate everyone's flexibility and patience as we navigate this school year. Staff are encouraged to speak with their supervisors about any specific questions related to their jobs or duties, and students and families should reach out to their teacher or principal, but below is a general list of expectations.

Teacher Expectations:

- Follow all mandated protocols, such as wearing face coverings.
- Instruct students daily.
- Participate in collaborative lesson planning and professional learning prior to and during active distance education.
- Conduct a minimum amount of daily and weekly real-time, synchronous session(s) minutes with all students.
- Arrange for daily communication and follow attendance processes.
- Facilitate resources for students with Individualized Education Programs (IEP) or Section 504 Accommodation Plans and English Learners.
- Facilitate Edgenuity learning opportunities.
- Maintain contact with parents and guardians.
- Attend and participate in all required parent/guardian meetings (i.e. Individualized Education Plan/504, EL, etc.).
- Provide emergency substitute plans and instructions as traditionally required.

Administrator Expectations:

- Follow all mandated protocols, such as wearing face coverings.
- Provide initial and ongoing parent/guardian communication, support, and guidance.
- Lead master scheduling while considering the instructional needs of all students.
- Provide standards-based instruction to students.
- Support the development and implementation for Professional Learning Communities decision-making processes.
- Monitor Individualized Education Programs (IEP)/Section 504 Accommodation Plans/English Learner (EL) supports to ensure compliance and differentiated learning.
- Identify teachers and staff who serve as a team of expert users to increase the "bandwidth" of support for teachers.
- Observe instruction and provide feedback to licensed educators.

Student Expectations:

- Follow all mandated protocols, such as wearing face coverings.
- Maintain positive attendance and course progress.
- Complete assignments and tasks as assigned.
- Exhibit good study habits.
- Reach out to teachers when requiring assistance.
- Attend daily and weekly required real-time, synchronous sessions or recorded sessions.
- Participate in any proctored assessments, if applicable.

Staff are encouraged to speak with their supervisors about any specific questions related to their jobs or duties, and students and families should reach out to their teacher or principal, but below is a general list of expectations.

Expectations and Responsibilities (continued)

Parent/Guardian Expectations:

- Have student do a daily health check with WCSD's self-screening tool on page 9.
- Communicate with child's instructor(s) during school hours or written communication.
- Actively assist child with their learning and directly participate with student, specifically in early elementary grade levels.
- Provide support, guidance, and assistance.
- Foster a conducive area for learning in the home.
- Encourage and recognize positive gains and achievements.
- Actively monitor child's progress in assigned courses.

Special Education

Students in all grade levels receiving special education services will be able to attend school every day if their family chooses that option. All District special education teachers are receiving additional professional development support to implement all IEPs through in-person, hybrid, and distance learning. Educational activities will address all specially designed instruction identified through the IEP process and will be provided in conjunction with general education programming, whether in-person, hybrid, or distance learning models.

For students receiving special education services through self-contained programs, such as Comprehensive Life Skills and Strategies, who choose to attend school on a hybrid model or participate in distance learning, the curriculum has been adapted to be delivered via distance learning and educators have been trained in this learning model.

Athletics

WCSD will follow all guidelines presented by the Nevada Interscholastic Activities Association for athletics. For updated information about which sports have access to play, please visit <https://www.niaa.com>.

Acknowledgments

The Washoe County School District 2020-2021 School Year Planning Guide was created based on recommendations made by the Reopening Task Force and the Teaching and Learning Committee.

Reopening Task Force Committee

Leslie Allfree, CPR/AED Trainer, Student Health Services
Natha Anderson, President, Washoe Education Association
Roy Anderson, Emergency Manager
Lana Ball, Secretary, Desert Skies Middle School, President of WESP
Debra Biersdorff, Deputy Superintendent
Kiemmy B. Thai, WCSO Parent
Jeff Brasel, Registered Environmental Health Specialist, Washoe County Health Department
Ruby Burnley, Teacher, Diedrichsen Elementary
Jennifer Caldwell, Executive Assistant, Office of Communications & Community Engagement
Kellie Carney, Administrative Secretary, Billinghurst Middle School
Dina Ciaramella, Elementary Education Director, Curriculum & Instruction
Dr. Max Coppes, Chair of Pediatrics UNR Med & Physician-in-Chief Renown Children's Hospital
Virginia Doran, Director of Labor Relations
Megan Downs, Communications Manager
Nathan DuPree, Pastor, Living Stones Church
Norris DuPree, Clinical Psychologist
Emily Ellison, Chief Human Resources Officer
Pete Etchart, Chief Operating Officer
Kindra Fox, Secondary Education Director, Curriculum & Instruction
Samantha Fredrickson, Public Relations Specialist
Tami Goulden-Bosco, 504 Program Coordinator, Counseling Department
Rick Harris, Special Projects Administrator
Mari Hartmann, Clinical Services Director, Student Health Services
David Hartshorn, Principal, Mendive Middle School
Ben Hayes, Chief Accountability Officer

Dr. Sara Healy, Pediatric Infectious Diseases, Renown Children's Hospital & UNR Med
Raymond Hirschman, Assistant Principal, Spanish Springs High School
Jennifer Hodges, MS, CCC-SLP, MAA, Special Education Administrator, Area 4
Laura Hutchinson, Crisis Counselor, Counseling and Social Work Department
Laurel Iinuma, IT Coordinator
Jackie James, Risk Manager
Susan Kettler, Speech Pathologist, Diedrichsen Elementary
Sharon Kennedy, Principal, Incline Middle School
Laurel Kerr, WCSO Parent
Wayne Kerr, WCSO Parent
Paul LaMarca, Chief Ombudsman & Strategies Officer
Scott Lee, Assistant Director of Transportation
Katherine Loudon, Counseling Coordinator, Counseling Department
Joseph Maez, WCSO Parent
Rick Martin, Director of Transportation
Mark Mathers, Chief Financial Officer
Jeana Miller, Special Education Administrator Area 5, AT, Speech
Sara Montalvo, General Counsel
Tracy Moore, Sergeant, School Police
Jill Murdock, Grant Fiscal Administrator
Grace Ndolo, Mail Clerk
Mathew Ochs, Teacher, Reno High School
Lauren Ohlin, Director of Grants
Troy Parks, Lead Area Superintendent
Denise Paxton, Teacher, Shaw Middle School
Irene Payne, Chief Communications & Community Engagement Officer



Reopening Task Force Committee (continued)

Christopher Pilat, WCSD School Psychologist

Serena Robb, Local Business Owner and Retired WCSD High School Administrator/Principal

Neil Rombardo, Chief General Counsel

Josh Rosenbloom, Principal, Reed High School

Adam Searcy, Chief Facilities Management Officer

Trish Shaffer, MTSS-SEL Coordinator

Adam Shoda, Teacher, Galena High School

Ann Silver, Chief Executive Officer, Reno+Sparks Chamber of Commerce

Dr. Vanessa Slots, Chief General Pediatrics, Developmental Pediatrics & Adolescent Medicine, Renown Children's Hospital & UNR Med

Lianka Soliz, Director, Nutrition Services

Tom Stauss, Executive Director, Washoe Education Association

Veronica Thompson, WCSD Parent

Jason Trevino, Chief of School Police

Chris Turner, Chief Information Officer

Jim Verdi, Principal, Spanish Springs Elementary

Prim Walters, Principal, Diedrichsen Elementary

Maureen Wander, Teacher, Diedrichsen Elementary

Dr. David White DDS, Nevada Dental Association, American Dental Association

Tiffany Young, Equity and Diversity Director

The Teaching and Learning Committee is made up of over 30 key stakeholders including principals, directors, teachers, counselors, parents, and higher education partners.

Teaching and Learning Committee

Sandy Aird, Director of Assessment
Jenni Anderson, Principal, Veterans S.T.E.M. Academy
Debra Biersdorff, Deputy Superintendent
Dina Ciaramella, Director, Elementary Curriculum & Instruction/PLC Leadership
Ann Marie Dickson, Special Education Programming Director
Sue Egloff, Principal, Michael Inskeep Elementary School
Joe Ernst, Area Superintendent, Area 3
Lauren Ford, Area Superintendent, Area 4
Kindra Fox, Secondary Director, Curriculum and Instruction
Mike Gifford, Principal, Shaw Middle School
Kris Hackbusch, Principal, Reno High School
Troy Parks, Chief Academic Officer
Joel Peixoto, Principal, Dilworth Middle School
Colbee Riordan, Principal, Moss Elementary School
Cristina Oronoz, Principal, Hug High School
Dan Zimmerman, Principal, Incline Elementary School

Elementary Teaching and Learning Sub Committee:

Sandy Aird, Director of Assessment
Jenni Anderson, Principal, Veterans Elementary School
Shawna Baker, Risley Elementary School
Dina Ciaramella, Elementary Curriculum & Instruction/PLC Leadership
Debbie Deach, Lincoln Park Elementary School
Ann Marie Dickson, Special Education Programming Director
Samuel E. Ehrenreich, UNR
Sue Egloff, Michael Inskeep Elementary Schools
Micaela Geradin-Frey, Multi-Tiered System of Supports
Aaron Grossman, Gomm Elementary School
Cassandra Lopez, Equity & Diversity

Katherine Loudon, Counseling Services
Julie Lucas, ELD Facilitator
Janna Moyer, Multi-Tiered System of Supports
Joseph Nannini, UNR
Colbee Riordan, Principal, Moss Elementary School
Trish Shaffer, Multi-Tiered System of Supports
Mary Stach, ELD Facilitator
David Thaxton, Diedrichsen Elementary School

Secondary Teaching and Learning Sub Committee:

Sandy Aird, Director of Assessment
Judy Ashby, McQueen High School
Richard Clark, Reno High School
D'Lisa Crain, Family School Partnerships
Ann Marie Dickson, Special Education Programming Director
Kindra Fox, Secondary Director, Curriculum and Instruction
Joel Peixoto
Mike Gifford, Principal, Shaw Middle School
Kris Hackbush, Principal, Reno High School
Dallas Hulsey, Herz Middle School
Deanna Layport, North Valleys High School
Amea Lombardi, Damonte Ranch High School
Katherine Loudon, Counseling Services
Robert Munson, Wooster High School
Joe Nannini, UNR
Cristina Oronoz, Principal, Hug High School
Monica Peterson, UNR
Trish Shaffer, Multi-Tiered System of Supports
Maija Talso, ELD Facilitator
Fred Williams, Sparks Middle School
Tiffany Young, Equity & Diversity

Additional Resources

Community Resources for Families

Local community resources listed by alphabetical order; additional information can be found on their websites.

CARE Chest of Sierra Nevada: Medical Resources for Nevadans in Need

<https://carechest.org/site/>

CARE Chest is a Northern Nevada nonprofit agency serving individuals in need by providing medical resources, free of charge. Their programs include:

- Medical Equipment and Supplies
- Prescription Assistance
- Diabetic Supplies
- Medical Nutrition
- Rural Outreach and Mobile CARE Chest
- Club CARE Chest
- Independent Living and CARE Loan

If you need help with any of these, please call (775) 829-2273 or Visit Our Get Help Page.

Children's Cabinet

<https://www.childrencabinet.org/>

Provides support to families with a variety of services, including:

- Case managers and therapists on-site and available by phone to address either directly or via referral a range of family needs (food, rental assistance, utilities, etc.)
- They also are providing crisis counseling in person or via telehealth.
- Staff available to answer questions and make referrals to childcare providers via our Child Care Resource and Referrals.
- SafePlace continues to operate 24/7 for young people in unsafe or dangerous living situations. Dial 1-800-536-4588 or TEXT "SAFE" and current location to 4HELP (44357)

They also have links to community resources in response to the COVID-19 crisis: <https://www.childrencabinet.org/about-us/covid-19-resources/>.

Children's Mobile Crisis Response Team

<http://www.knowcrisis.com/> | 775-688-1670

Provides crisis intervention and support to Nevada families dealing with a behavioral or mental health crisis.

Community Health Alliance (CHA)

<https://www.chanevada.org/>

Provides information for families who need health care, but do not have the funds/uninsured. CHA now has an online application in both English and Spanish. You can also reach them by calling 775-329-6300

Crisis Support Services of Nevada

www.cssnv.org

It is normal to feel anxious at times like this. If you or someone you know is struggling and needs help:

- Call 1-800-273-8255 or the local number 775-784-8090,
- Text LISTEN to 839863
- Check out the website at
- Staff and volunteers are here 24/7/365. *You matter.*

Emergencies call 9-1-1. For non-emergencies:

- Washoe County Sheriff's Office 775-328-3001
- City of Reno Police 775-324-2121
- City of Sparks Police 775-353-2231

Join Together Northern Nevada

Stressful events can bring about different coping skills. If you or a family member is struggling with addiction or substance abuse, you can:

Contact our local Join Together Northern Nevada (jtnn.org) or you can call their helpline at 775-825-HELP (4357) to help you get the right supports.

Nevada 211

This is a free site through a program of the Nevada Department of Health and Human Services with local resources available. Accessible 24/7 by dialing 2-1-1, texting 898-211 or www.nevada211.org

Nevada Department of Employment, Training, and Rehabilitation (Unemployment services)

File for unemployment online at ui.nv.gov/css.html.

- Call centers have extended their hours and can assist people from 8 a.m.- 8 p.m. Monday through Friday.
- Northern Nevada: 775-684-0350.
- Rural areas in Nevada and out-of-state residents: 888-890-8211

Nevada Legal Services

<https://nslaw.net/>

Nevada Legal Services, Inc. (NLS) is a nonprofit organization providing free legal services to low-income Nevadans. NLS is a state wide organization assisting every county in Nevada. We are funded through various sources but are primarily funded through a grant from the federal government by way of the Legal Services Corporation. This agency has also compiled a comprehensive and current community resource list related to public assistance during the COVID-19 pandemic. <https://nslaw.net/wp-content/uploads/2020/07/COVID-19-Resource-Guide-UPDATED-July17.pdf>

SafePlace

Operates 24/7 for young people in unsafe or dangerous living situations.

Dial 1-800-536-4588 or TEXT "SAFE" and current location to 4HELP (44357)

SAFEVOICE

Students, parents, and faculty throughout Nevada now have access to SafeVoice, an anonymous reporting system used to report threats to the safety or well-being of students. SafeVoice was established by the Nevada Department of Education under SB 212 in 2017 to protect student wellness, prevent violence, and save lives.

In partnership with the Nevada Department of Public Safety, the SafeVoice program provides students a safe place to submit tips concerning their safety or that of others. A fully trained professional team of experts responds in an appropriate manner 24/7/365. Tips always stay anonymous. (Retrieved from Nevada Department of Education website SafeVoice NV.org, 2020).

- Use the SAFEVOICE App or log onto SafeVoiceNV.org.
- Select your school
- Select event type or concern type
- Or you may call the hotline at 1-833-216-7233.
- Letter to Students from SafeVoice of the State of Nevada Department of Education (English)

The Substance Abuse and Mental Health Services Administration (SAMHSA)

<https://findtreatment.samhsa.gov/>

Provides information to find treatment near you.

Health Resources

Resources listed by alphabetical order; additional information can be found on their websites.

Centers for Disease Control and Prevention (CDC)

Get facts about Coronavirus

<https://www.cdc.gov/coronavirus/2019-ncov/index.html>

Immunize Nevada

Children's COVID-19 safety tips:

<https://immunizenevada.org/news/ask-mask>

Washoe County Health District

Latest updates on COVID-19 in Washoe County:

https://www.washoecounty.us/health/programs-and-services/communicable-diseases-and-epidemiology/educational_materials/COVID-19.php



Washoe County School District

Every Child, By Name And Face, To GraduationSM

**For more information on WCSD reopening plans visit
www.washoeschools.net/reopening**