

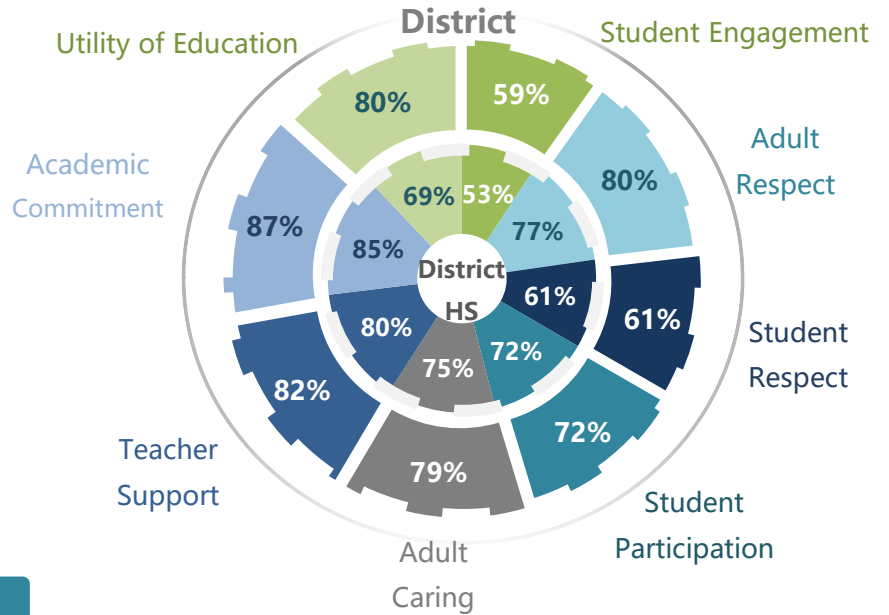
Washoe County School District - High School



Response Rate **79%**

Number of Surveys Returned **7387**

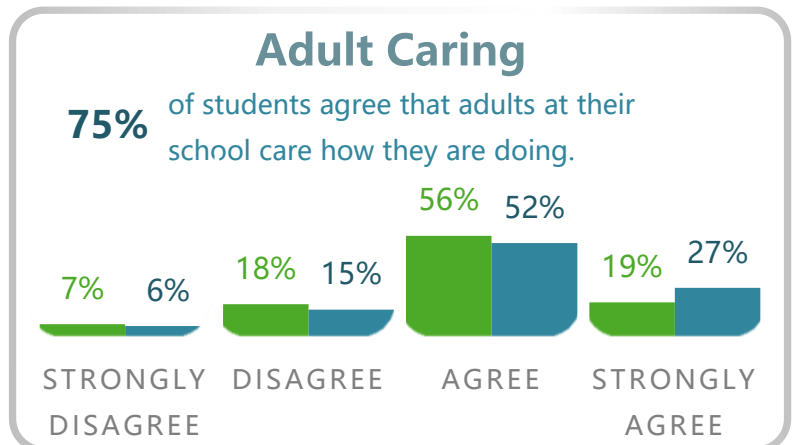
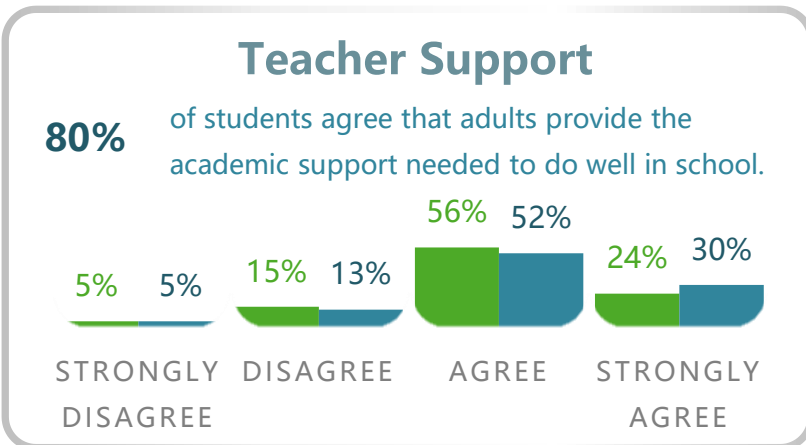
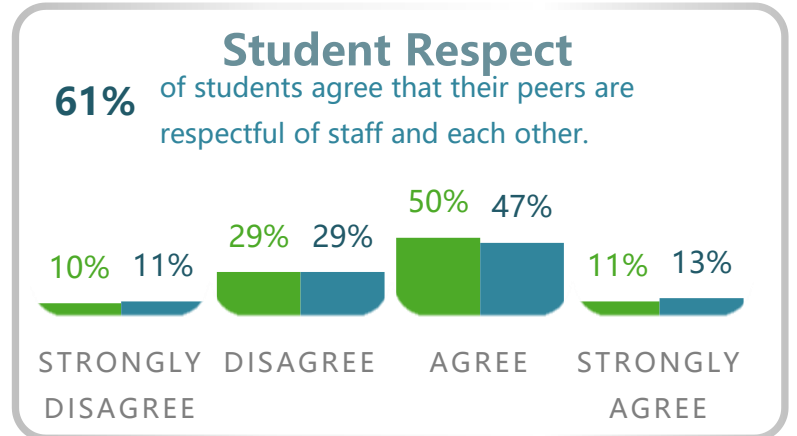
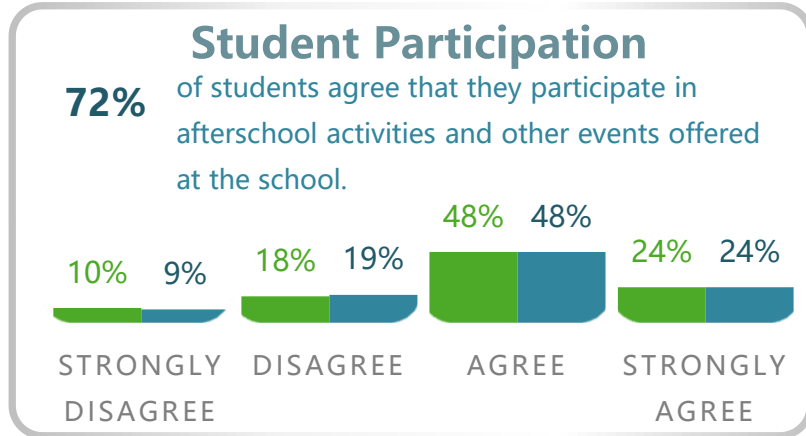
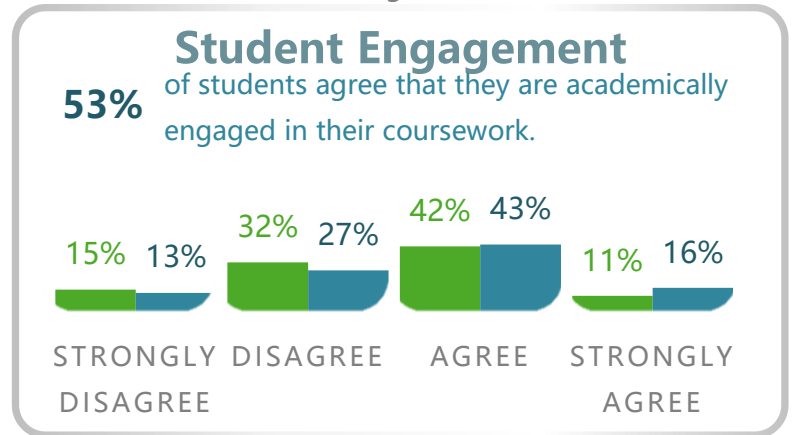
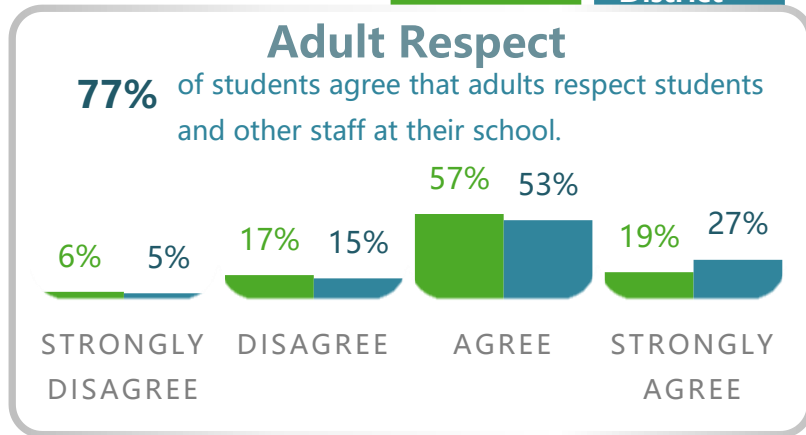
District - School Comparison on Scales



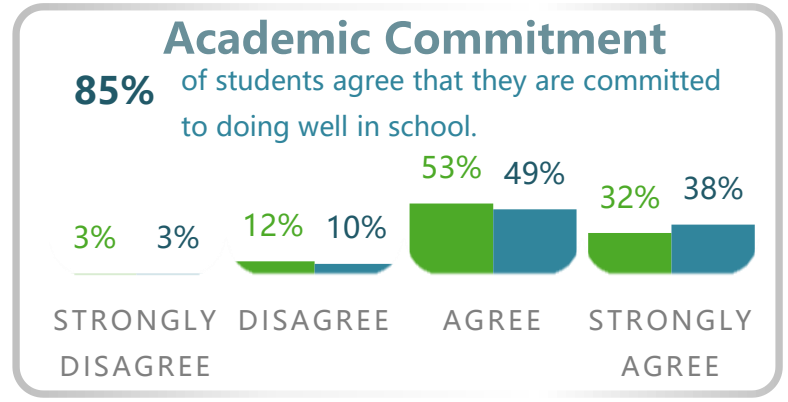
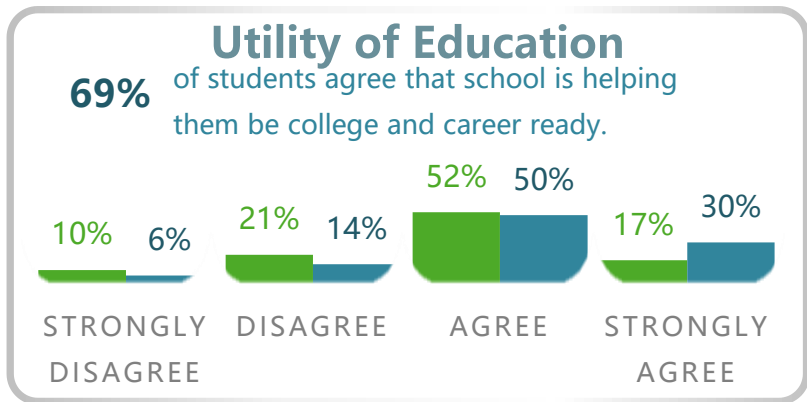
The charts on this page display the % of students who marked each response option across all questions in a scale. The caption above each chart represents the percentage of "Agree"/"Strongly Agree" or "Easy"/"Very Easy" responses across all items in a scale.\* The tables on the next pages display the results of all survey questions and which items are included in each scale.

\*Excludes "Don't Know" & "N/A" from totals

**District HS** **District**

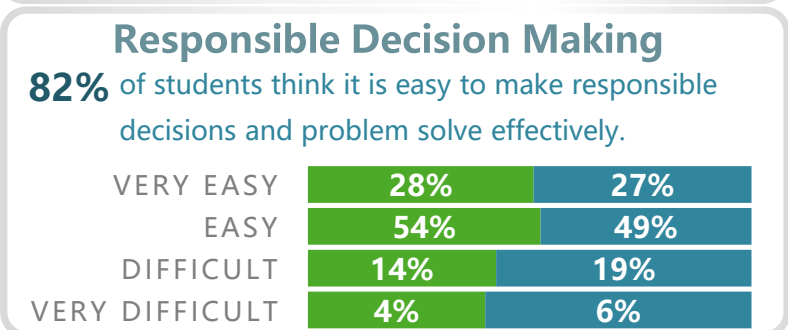
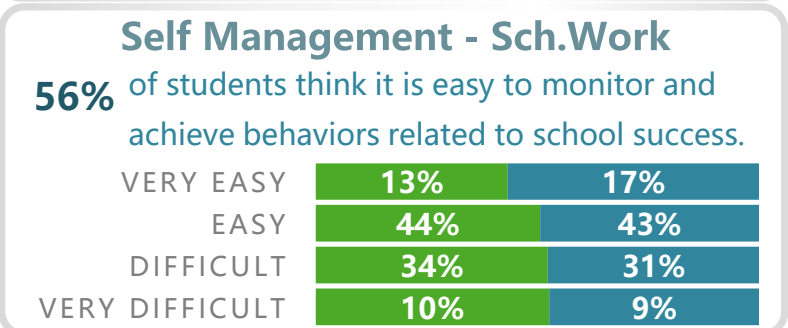
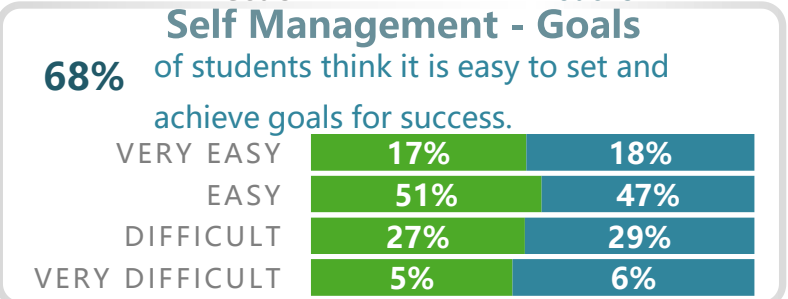
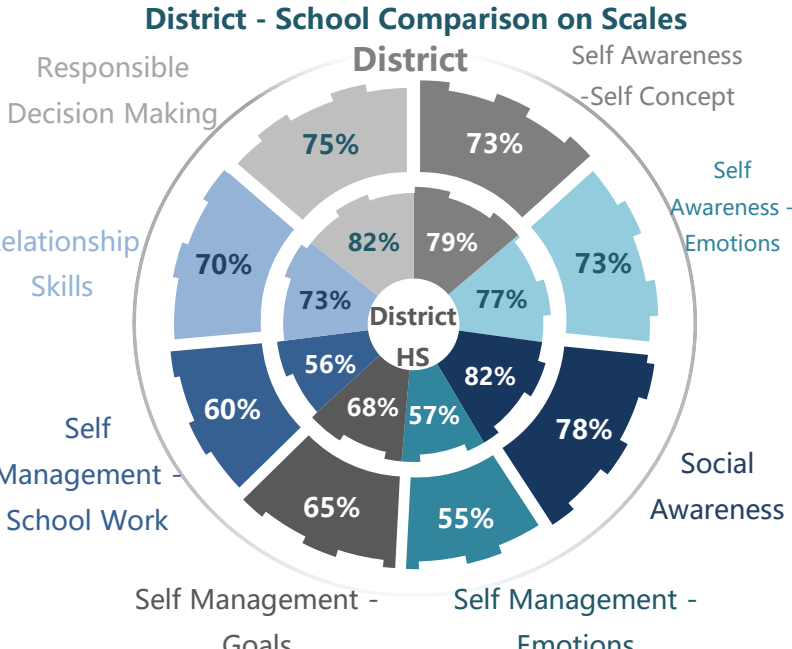
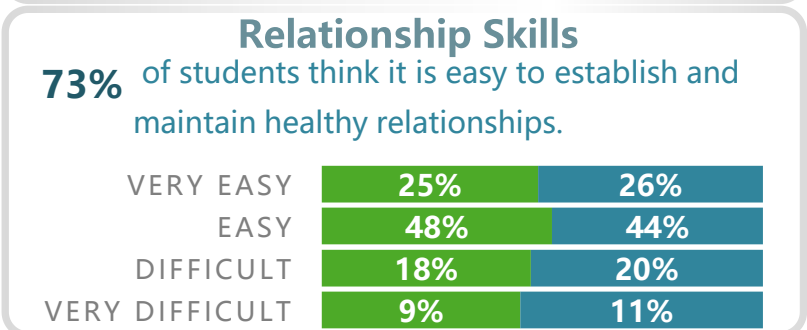
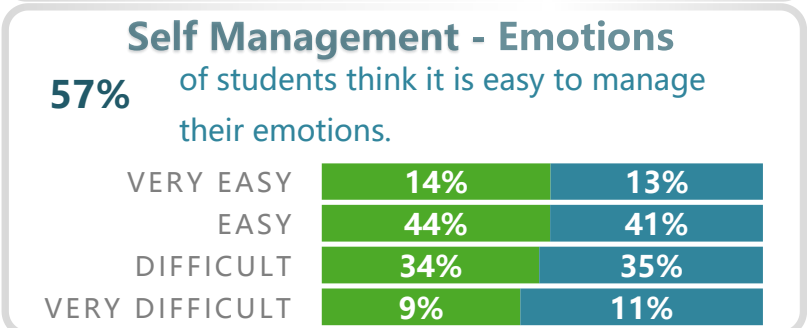
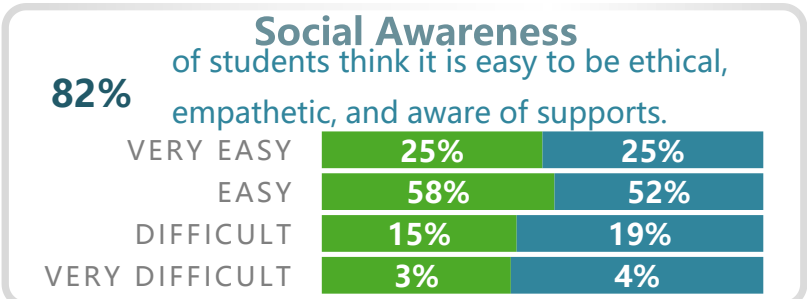
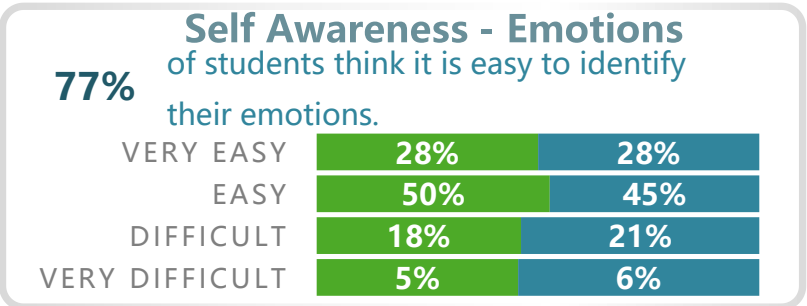
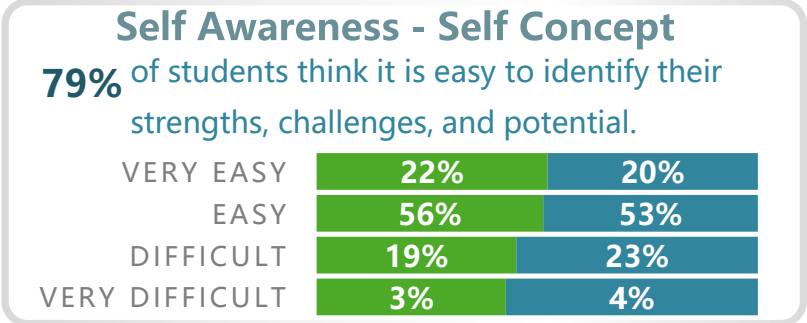


Numbers may not add up to 100% due to rounding



## Social Emotional Skills

**District HS** **District**



Student Climate Individual Items

The tables below show the percentage of students in your school who provided a response to each question on the survey across response categories.

**Note:** These questions should be reviewed along with your school's results on each scale on the previous page.

**Table 1. Social/Emotional Skills (grades 5, 6, 8, and 11 only)**

**Self-Awareness Subscale**

**a. Self-Concept:**

	Very Difficult	Difficult	Easy	Very Easy
1. Knowing what my strengths are.	2%	12%	55%	31%
2. Knowing how to get better at things that are hard for me to do at school.	3%	28%	56%	13%
3. Knowing when I am wrong about something.	3%	15%	59%	23%
4. Knowing when I can't control something.	4%	19%	55%	22%

**b. Emotion Knowledge:**

1. Knowing when my feelings are making it hard for me to focus.	3%	17%	52%	28%
2. Knowing the emotions I feel.	6%	17%	47%	30%
3. Knowing ways to make myself feel better when I'm sad.	8%	28%	42%	23%
4. Noticing what my body does when I am nervous.	2%	12%	54%	32%
5. Knowing when my mood affects how I treat others.	2%	13%	56%	30%
6. Knowing ways I calm myself down.	6%	21%	49%	24%

**Social Awareness Subscale**

1. Learning from people with different opinions than me.	3%	18%	58%	22%
2. Knowing what people may be feeling by the look on their face.	3%	14%	54%	30%
3. Knowing when someone needs help.	2%	13%	58%	26%
4. Knowing how to get help when I'm having trouble with a classmate.	5%	19%	56%	19%
5. Knowing how my actions impact my classmates.	2%	11%	62%	25%

**Self-Management Subscale**

**a. Emotion Management:**

	Very Difficult	Difficult	Easy	Very Easy
1. Getting through something even when I feel frustrated.	6%	37%	44%	13%
2. Being patient even when I am really excited.	6%	26%	51%	17%
3. Staying calm when I feel stressed.	12%	36%	38%	13%
4. Working on things even when I don't like them.	10%	37%	41%	11%

**b. Goal Management:**

1. Finishing tasks even if they are hard for me.	5%	35%	50%	11%
2. Setting goals for myself.	4%	19%	51%	26%
3. Reaching goals that I set for myself.	6%	33%	48%	14%
4. Thinking through the steps it will take to reach my goal.	4%	22%	56%	18%

**c. School Work:**

1. Doing my schoolwork even when I do not feel like it.	15%	38%	36%	11%
2. Being prepared for tests.	9%	36%	44%	12%
3. Working on assignments even when they are hard.	6%	36%	48%	10%
4. Planning ahead so I can turn a project in on time.	11%	33%	43%	13%
5. Finishing my schoolwork without reminders.	9%	28%	47%	16%
6. Staying focused in class even when there are distractions.	11%	32%	44%	14%

**Relationship Skills Subscale**

1. Respecting a classmate's opinions during a disagreement.	4%	12%	58%	25%
2. Getting along with my classmates.	4%	9%	52%	35%
3. Sharing what I am feeling with others.	22%	32%	34%	13%
4. Talking to an adult when I have problems at school.	18%	31%	39%	12%
5. Being welcoming to someone I don't usually eat lunch with.	5%	15%	55%	24%
6. Getting along with my teachers.	4%	7%	52%	37%

## Responsible Decision-Making Subscale

1. Thinking about what might happen before making a decision.	4%	15%	57%	24%
2. Knowing what is right or wrong.	2%	7%	48%	44%
3. Thinking of different ways to solve a problem.	1%	12%	62%	25%
4. Saying "no" to a friend who wants to break the rules.	5%	15%	50%	30%
5. Helping to make my school a better place.	9%	20%	55%	16%

## Table 2. Student Engagement

	Strongly Disagree	Disagree	Agree	Strongly Agree
2a. Most of what I learn in school is interesting.	11%	30%	53%	7%
2b. School keeps my mind really busy.	6%	19%	47%	27%
2c. Time seems to pass very quickly in my classes.	23%	38%	31%	8%
2d. I think a lot about what I learn in my classes even when I'm out of school.	14%	37%	41%	7%
2e. I look forward to coming to school every day.	22%	34%	36%	8%

## Table 3. Adult Respect

	Strongly Disagree	Disagree	Agree	Strongly Agree
3a. Teachers and staff at my school treat each other with respect.	4%	9%	59%	28%
3b. Teachers and staff at my school treat all students fairly.	14%	29%	43%	14%
3c. Teachers and staff at my school trust students to make good choices.	7%	20%	57%	16%
3d. Teachers and staff at my school treat students with respect.	6%	18%	58%	18%
3e. The rules and school-wide expectations for behavior are very clear at my school.	3%	13%	61%	23%
3f. Teachers and staff always make sure students follow rules and expectations for behavior.	4%	17%	60%	19%
3g. There are examples of different racial, ethnic or cultural backgrounds in the class lessons at this school.	5%	14%	62%	19%

## Table 4. Student Respect

	Strongly Disagree	Disagree	Agree	Strongly Agree
4a. Students at my school treat teachers and staff with respect.	12%	36%	45%	7%
4b. Students treat other students at my school the same regardless of their similarities or differences.	13%	32%	45%	9%
4c. Students of different cultural backgrounds, races, or ethnicities get along well at this school.	5%	14%	63%	17%
4d. Students at my school care about each other.	10%	30%	51%	10%
4e. Students at this school think it is important to follow the rules and expectations.	12%	40%	42%	6%
*4f. Students at this school are often teased or picked on.	13%	48%	30%	9%
4g. Boys and girls are treated equally well at this school.	8%	20%	55%	17%

\*This item is reversed coded when computing the composite scale score on the previous page.

## Table 5. Student Participation

	Strongly Disagree	Disagree	Agree	Strongly Agree
5a. I regularly attend school-sponsored events, such as school dances, sporting events, student performances, or other school activities.	17%	27%	38%	18%
5b. I regularly participate in extra-curricular activities offered through this school, such as school clubs or organizations, musical groups, sports teams, student government, or any other extra-curricular activities.	16%	28%	35%	21%
5c. There are lots of chances for students to get involved in sports, clubs, and other school activities outside of class.	3%	8%	54%	35%
5d. I have a lot of chances to be part of class discussions or activities.	2%	9%	64%	24%

**Table 6. Adult Caring**

	Strongly Disagree	Disagree	Agree	Strongly Agree
<b>6a.</b> Teachers and staff at my school care about every student.	9%	22%	52%	17%
<b>6b.</b> Teachers and staff at my school listen to students' ideas and opinions.	7%	20%	59%	14%
<b>6c.</b> Teachers and staff at my school talk openly to students about school issues.	7%	23%	56%	14%
<b>6d.</b> There is a teacher or adult who will care if I'm not in school.	7%	17%	50%	26%
<b>6e.</b> There is at least one adult at my school who is willing to help me with a personal problem.	6%	10%	55%	30%
<b>6f.</b> My teachers care about me.	6%	14%	62%	18%
<b>6g.</b> I feel like I belong at this school.	10%	16%	54%	21%
<b>6h.</b> My teachers make me feel good about myself.	7%	19%	60%	14%

**Table 7. Teacher Support**

	Strongly Disagree	Disagree	Agree	Strongly Agree
<b>7a.</b> My teachers have said nice things about me to my parents or other family members.	6%	16%	57%	20%
<b>7b.</b> My teachers think I can get high grades in their classes if I try hard enough.	2%	4%	54%	40%
<b>7c.</b> My teachers connect what I am doing in school to life outside of the classroom.	8%	28%	50%	14%
<b>7d.</b> I feel comfortable asking my teachers for help when I'm struggling in class.	8%	20%	54%	18%
<b>7e.</b> There is at least one teacher at my school who would be willing to give me extra help with school work if I needed it.	3%	5%	57%	35%
<b>7f.</b> I can meet the expectations that my teachers have set for me.	3%	11%	64%	22%
<b>7g.</b> My teachers always tell me how I do on my class work, tests, and homework assignments.	4%	18%	59%	19%

**Table 8. Academic Commitment**

	Strongly Disagree	Disagree	Agree	Strongly Agree
<b>8a.</b> I can get good grades in my classes if I work hard enough.	1%	4%	49%	46%
<b>8b.</b> I try my hardest to do well in school.	4%	16%	50%	29%
<b>8c.</b> Even if the work in my classes is hard, I can learn it.	2%	10%	62%	26%
<b>8d.</b> I set high academic goals for myself.	4%	16%	49%	31%
<b>8e.</b> I feel good about what I accomplish in school.	5%	14%	53%	28%

**Table 9. Utility of Education**

	Strongly Disagree	Disagree	Agree	Strongly Agree
<b>9a.</b> I learn things in my classes that will help me be successful in life outside of school.	11%	23%	52%	15%
<b>9b.</b> I will use what I learn in my classes in my future job.	10%	23%	51%	16%
<b>9c.</b> What I learn in my classes makes me want to get more education after high school.	8%	17%	53%	21%

**Table 10. College and Career Readiness (for 8th, 9th, and 11th grade only)**

**10a. Please rate your agreement to the following statement.**

I could explain what classes are needed to graduate from high school to another student at my school.	Strongly Disagree	Disagree	Agree	Strongly Agree
	4%	13%	61%	23%

**10b. What do you plan to do after you graduate high school? (select all that apply)**

9%	Do not have a plan for after high school
3%	Do not think I will graduate high school
68%	Attend a 4-year college/university
17%	Attend a 2-year college/university
16%	Attend a career or technical school
23%	Work full-time
29%	Work part-time
12%	Serve in the military
12%	Other

**10c. In the last year, how many times have you talked...**

	Never	1-3 times	4 or more times
1. ...with someone <u>at your school</u> about what you want to do after graduating high school?	12%	45%	43%
2. ... with someone <u>outside of school</u> about what you want to do after graduating high school (for example, your friends, family, coach, mentor, etc.)?	7%	36%	57%

**10d. Please rate your agreement to the following statement.(only if selected "2 or 4 year college"):**

	Strongly Disagree	Disagree	Agree	Strongly Agree
1. I think I will be very successful in college-level courses.	4%	12%	64%	20%
2. I could describe all of the steps involved in preparing a college application to another student at my school.	14%	39%	38%	10%
3. I know when the deadlines are for college applications.	18%	43%	31%	8%
4. I know what the course requirements are for the colleges I want to attend.	12%	33%	44%	11%
5. I know how and when to apply for financial aid for college if I need it.	16%	38%	36%	10%

**10e. Please rate your agreement to the following statements (only if selected "no plan" or "not completing high school"):**

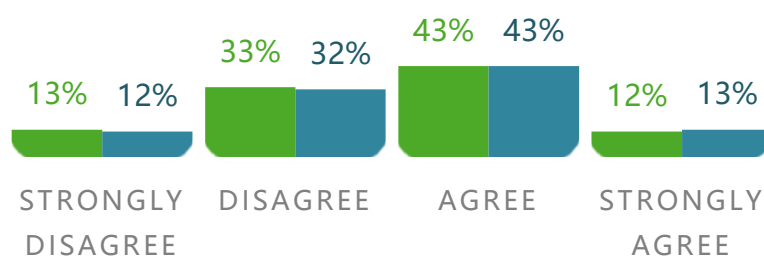
	Strongly Disagree	Disagree	Agree	Strongly Agree
1. I feel prepared to pursue my career goals after graduating high school.	5%	17%	52%	25%
2. I know what type of degree (honors, GED, standard diploma, etc.) I will need from high school to pursue my career goals.	6%	14%	51%	29%

District HS

District

## College Readiness

**54%** of students who plan on attending a 2 or 4-year college agree that they know the steps required to apply to college.

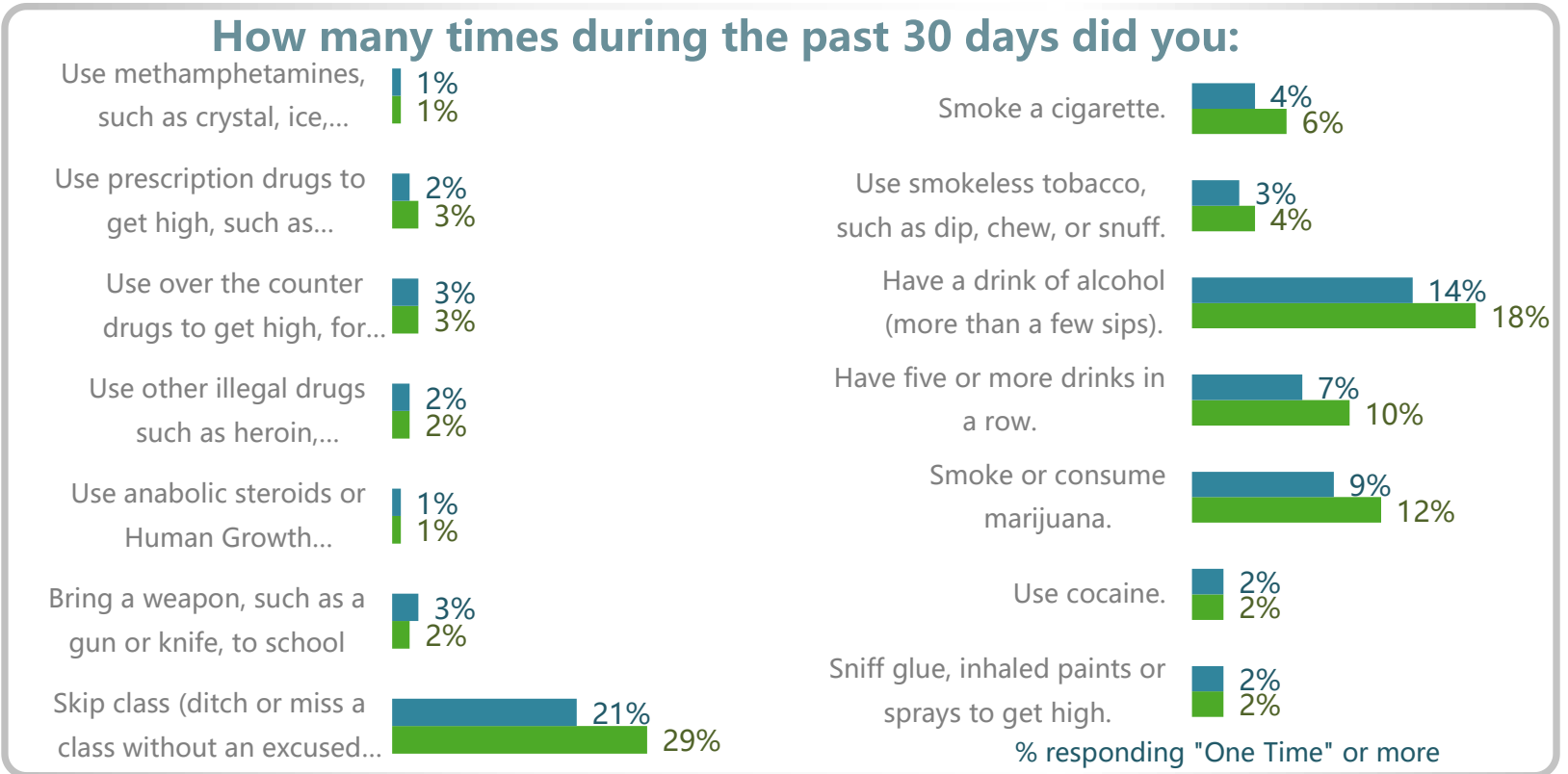
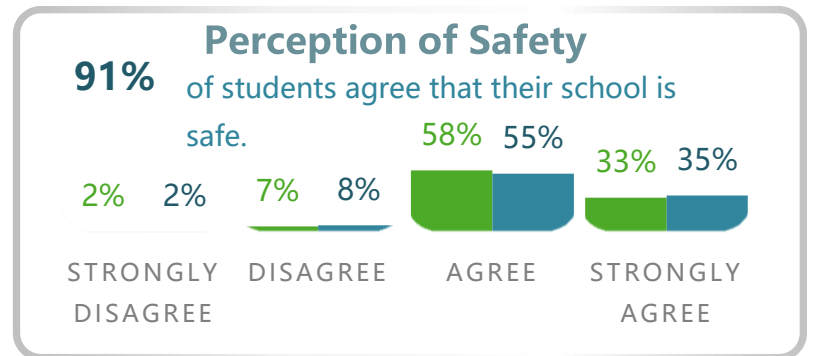
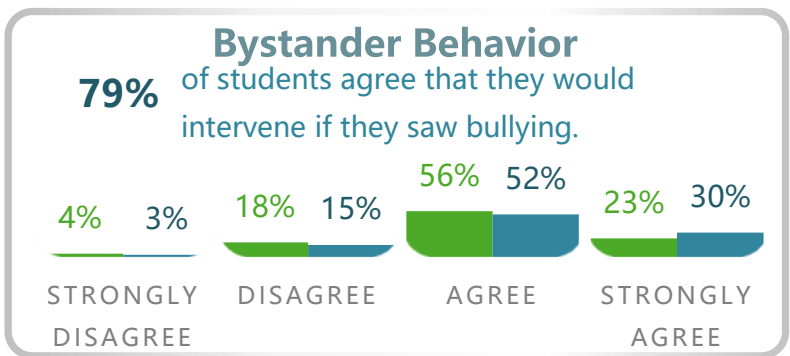
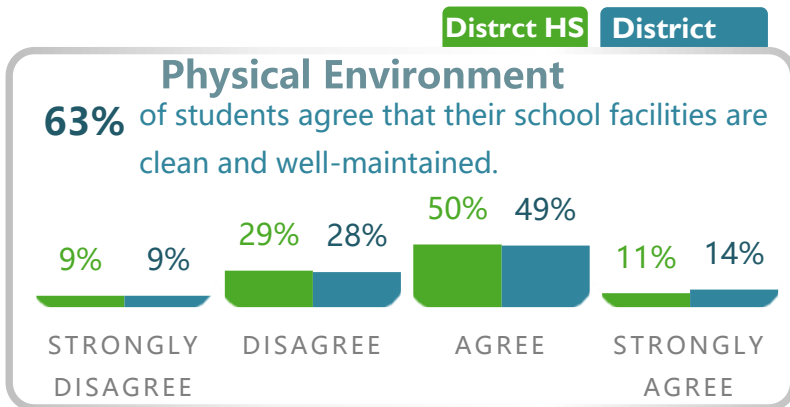
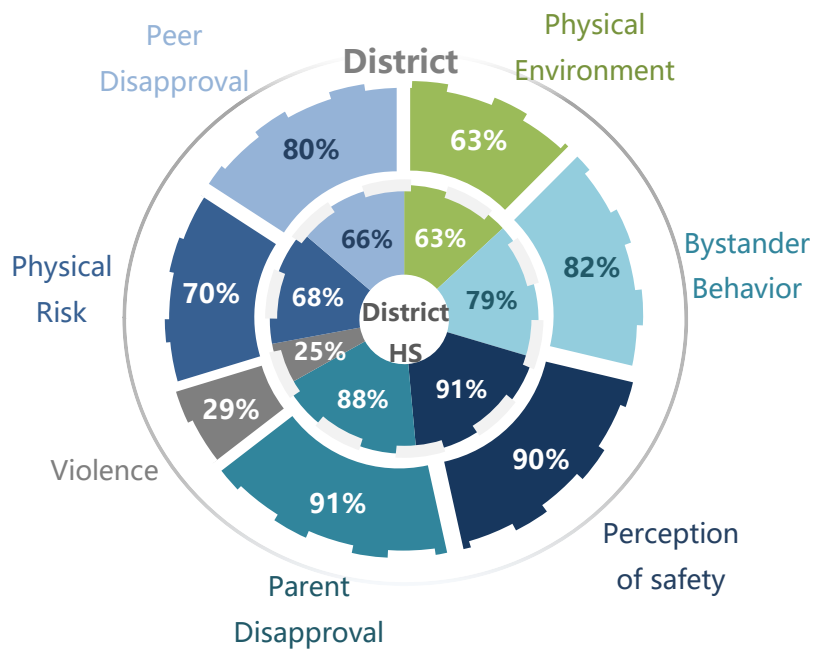


## Washoe County School District - High School

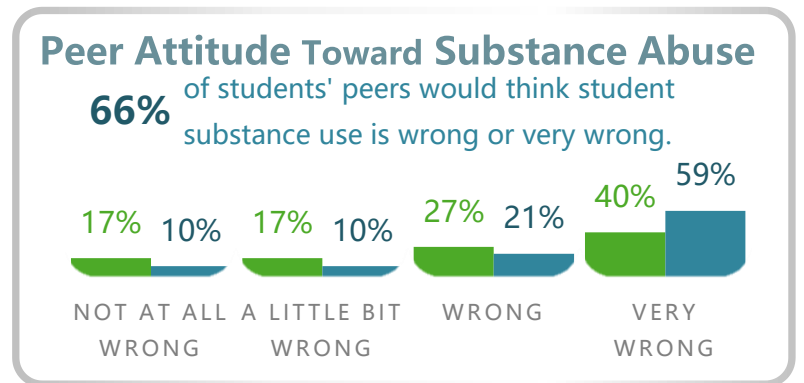
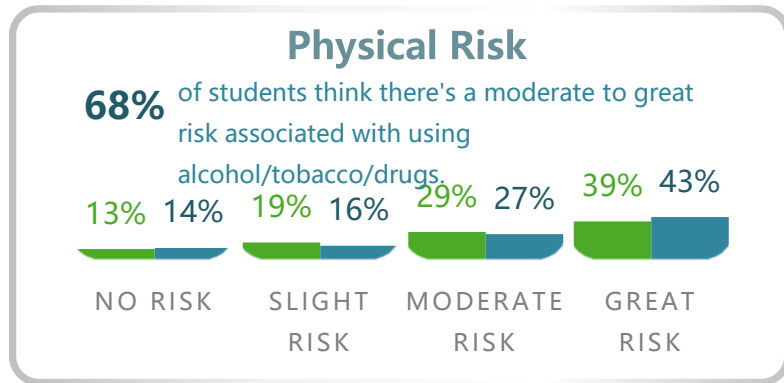
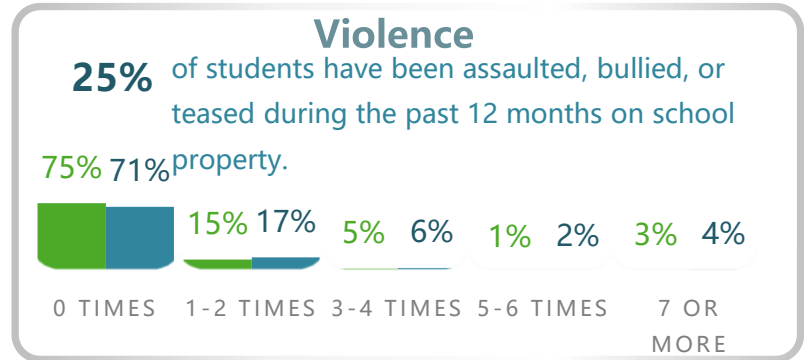
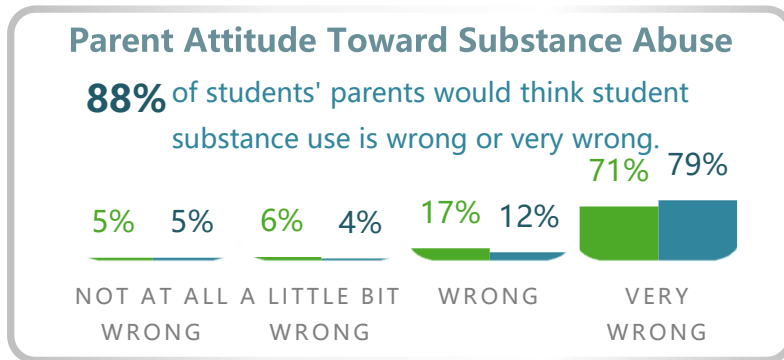
### Safety Survey

The charts on this page display the % of students who marked each response option across all questions in a scale. The caption above each chart represents the percentage of "Agree"/"Strongly Agree" responses across all items in a scale.\* The tables on the next pages display the results of all survey questions and which items are include in each scale.  
\*Excludes "Don't Know" & "N/A" from totals

District - School Comparison on Scales



## Student Perceptions of Substance Use



Numbers may not add up to 100% due to rounding

## Student Safety Individual Items

The tables below show the percentage of students in your school who provided a response to each question on the survey across response categories.

**Note:** These questions should be reviewed along with your school's results on each scale on the previous page.

**Table 10. Perception of Safety**

I feel safe...	Strongly Disagree	Disagree	Agree	Strongly Agree
<b>11a.</b> on the way to and from school.	2%	3%	51%	43%
<b>11b.</b> while at school.	2%	6%	61%	30%
<b>11c.</b> during lunchtime at school.	2%	6%	59%	33%
<b>11d.</b> in the restrooms at school.	4%	11%	58%	27%
<b>11e.</b> moving between classes.	2%	6%	60%	32%
<b>11f.</b> *at school bus stops.	4%	8%	53%	35%
<b>11g.</b> *riding on the school bus.	5%	8%	54%	33%

\*Only students responding that they ride the school bus were presented with these questions.

**Table 12. Physical Environment**

	Strongly Disagree	Disagree	Agree	Strongly Agree
<b>12a.</b> My school building is clean.	5%	19%	62%	14%
<b>12b.</b> The temperature in my school is comfortable all year round.	14%	42%	38%	6%
<b>12c.</b> The bathrooms in my school are clean.	16%	36%	42%	7%
<b>12d.</b> *A lot of equipment at my school is broken or outdated.	11%	53%	29%	7%
<b>12e.</b> * Vandalism of school property is a problem at my school.	18%	57%	21%	4%

\*These items were reverse coded to calculate scale scores.



**Table 13. Bystander Behavior**

	Strongly Disagree	Disagree	Agree	Strongly Agree
13a. If a kid is being teased a lot, I will tell an adult at my school.	5%	22%	54%	20%
13b. If a student is teasing another student, I will tell him or her to stop.	3%	12%	56%	29%
13c. When I see a student is being teased, I stick up for him or her.	2%	15%	56%	26%
13d. *When I see a student being picked on, I try not to get in the middle of it.	13%	46%	34%	7%
13e. I make a point to be friendly to students I see getting picked on by others.	2%	11%	65%	22%
13f. If I hear a rumor about a student, I do not spread the rumor.	3%	12%	56%	30%
13g. I try to include other students when I see that they are alone.	3%	20%	60%	17%

\*This item was reverse coded to calculate scale score.

**Table 14. Targeted Violence**

**a. During the past 12 months, how many times on school property have you:**

	0 times	1-2 times	3-4 times	5-6 times	7 or more
1. been grabbed, shoved, punched or kicked by someone being mean.	69%	19%	6%	2%	4%
2. been cursed at, verbally threatened, or made fun of by someone being mean.	52%	23%	11%	4%	10%
3. seen a physical fight.	38%	38%	16%	4%	6%
4. been in a physical fight.	89%	8%	2%	1%	1%
5. seen another student with a gun, knife, or other weapon.	79%	15%	3%	1%	2%
6. been threatened with a gun, knife, or other weapon.	95%	4%	1%	0%	1%
7. had property stolen or deliberately damaged, such as your books, clothing, or car.	74%	20%	4%	1%	2%
8. received cruel, vicious, or threatening messages through text messaging, email, or social networking sites.	82%	10%	4%	1%	3%
9. had someone take your picture and forwarded it to other people's phones or posted it on the internet without your knowledge or consent.	80%	13%	4%	1%	3%
10. had someone hack into your email account or used your phone to send mean or embarrassing material to others.	94%	4%	1%	0%	1%
11. been targeted, such as teased, called mean names, or was physically attacked, by another student.	77%	14%	4%	2%	3%

**b. Please indicate the reason(s) why you were targeted:**

**(Only presented to students who reported "one time or more" to any questions in Table 14 above)**

	Yes	No	Don't Know
1. Your race, ethnicity, or national origin.	14%	62%	23%
2. Your religious beliefs.	8%	75%	17%
3. Your gender (being male or female).	15%	68%	16%
4. A physical or mental disability.	7%	80%	14%
5. Because of the way you dress.	17%	67%	16%
6. Because you are gay, lesbian, bisexual, or someone thought you were.	10%	78%	12%
7. Because of your physical characteristics (weight, height, hair color).	29%	57%	15%

**Table 15. Safety Knowledge**

	TRUE	FALSE
15a. I know the purpose of Secret Witness.	87%	13%
15b. I know where to find the phone and/or text number for Secret Witness.	65%	35%
15c. I know who to go to for help if I am bullied in school.	91%	9%
15d. I know the locations of fire extinguishers in my school.	62%	38%
15e. I know how to use a fire extinguisher.	61%	39%
15f. In the case of a fire, I know to leave the school and clear 50 feet away from the building.	95%	5%

15g. I know the locations of the emergency exits at my school.	86%	14%
15h. I would take cover under tables or desks in the event of an explosion, earthquake, or crash while I am in the school building.	94%	6%
15i. If I saw a suspicious object or potential bomb at school, I would immediately alert School Police or an adult at school.	93%	7%
15j. In the event of an emergency at school I know what to do.	90%	10%
15k. My school communicates with students throughout the year about what they should do in the event of a school emergency.	82%	18%
15l. Students are trained to be on the lookout for anything out of the ordinary (people, behavior, containers, broken air vents, vehicles).	52%	48%
15m. School staff members are visible in the hallways during non-class times.	84%	16%
15n. I know what to do in the event of a code red or code yellow lock down at my school.	93%	7%

**Table 16. Risk-Taking Behaviors (In grade 7 or above)**

How many times during the past 30 days did you:	0 times	1-2 times	3-4 times	5-6 times	7 or more
16a. Smoke a cigarette.	94%	2%	1%	0%	3%
16b. Use smokeless tobacco, such as dip, chew, or snuff.	96%	1%	0%	0%	1%
16c. Have a drink of alcohol (more than a few sips).	82%	9%	4%	1%	4%
16d. Have five or more drinks in a row.	90%	5%	2%	1%	3%
16e. Smoke or consume marijuana.	88%	4%	1%	1%	6%
16f. Use cocaine.	98%	1%	0%	0%	1%
16g. Sniff glue, inhaled paints or sprays to get high.	98%	1%	0%	0%	1%
16h. Use methamphetamines, such as crystal, ice, crank, speed, chalk.	99%	0%	0%	0%	1%
16i. Use prescription drugs to get high, such as Vicodin, OxyContin, and Methadone.	97%	1%	0%	0%	1%
16j. Use over the counter drugs to get high, for example cough & cold medications or diet pills.	97%	1%	1%	0%	1%
16k. Use other illegal drugs such as heroin, hallucinogens, depressants or tranquilizers.	98%	1%	0%	0%	1%
16l. Use anabolic steroids or Human Growth Hormone (HGH) without a prescription.	99%	0%	0%	0%	1%
16m. Bring a weapon, such as a gun or knife, to school.	98%	1%	0%	0%	1%
16n. Skip class (ditch or miss a class without an excused absence).	71%	17%	6%	2%	4%

**Table 16. Physical Risk**

How much do you think people risk harming themselves physically or in other ways...	No Risk	Slight Risk	Moderate Risk	Great Risk
16a. ...when they have five or more drinks of an alcoholic beverage once or twice a week?	9%	24%	38%	28%
16b. ...if they smoke one or more packs of cigarettes per day?	8%	10%	23%	59%
16c. ...if they smoke marijuana once or twice a week?	31%	29%	22%	17%
16d. ...if they use prescription drugs that are not prescribed to them?	7%	11%	29%	53%
16e. ...if they take one or two drinks of an alcoholic beverage nearly every day?	10%	20%	32%	39%

**Table 17. Perception of Parent Attitude Toward Substance Abuse**

	Not at all wrong	A little bit wrong	Wrong	Very wrong
17a. How wrong do your parents feel it would be for you to have one or two drinks of an alcoholic beverage nearly every day?	5%	7%	21%	67%
17b. How wrong do your parents feel it would be for you to smoke tobacco?	4%	4%	16%	76%
17c. How wrong do your parents feel it would be for you to smoke marijuana?	9%	10%	17%	64%
17d. How wrong do your parents feel it would be for you to use prescription drugs not prescribed to you?	4%	4%	14%	79%

**Table 18. Perception of Peer Attitude Toward Substance Abuse**

	Not at all wrong	A little bit wrong	Wrong	Very wrong
<b>18a.</b> How wrong do your peers feel it would be for you to have one or two drinks of an alcoholic beverage nearly every day?	14%	21%	30%	34%
<b>18b.</b> How wrong do your peers feel it would be for you to smoke tobacco?	12%	14%	30%	44%
<b>18c.</b> How wrong do your peers feel it would be for you to smoke	31%	19%	19%	31%
<b>18d.</b> How wrong do your peers feel it would be for you to use prescription drugs not prescribed to you?	10%	13%	28%	49%

**Table 19. Attitude Toward Peer Substance Use**

	Strongly Approve	Somewhat Approve	Neither Approve nor Disapprove	Somewhat Disapprove	Strongly Disapprove
<b>19a.</b> How do you feel about someone your age having one or two drinks of an alcoholic beverage nearly every day?	5%	2%	27%	19%	46%