

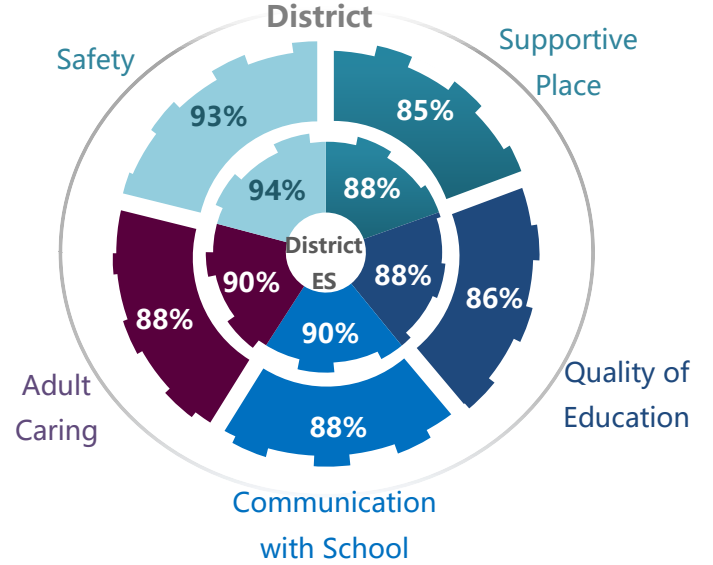
Washoe County School District - Elementary



The charts on this page display the % of parents who marked each response option across all questions in a scale. The caption above each chart represents the percentage of "Agree"/"Strongly Agree" responses across all items in a scale.* The tables on the next pages display the results of all survey questions and which items are included in each scale.

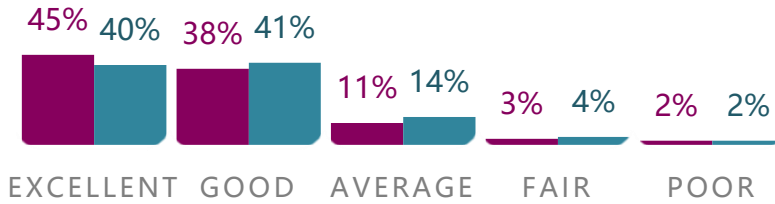
*Excludes "Don't Know" & "N/A" from totals

District - School Comparison on Scales



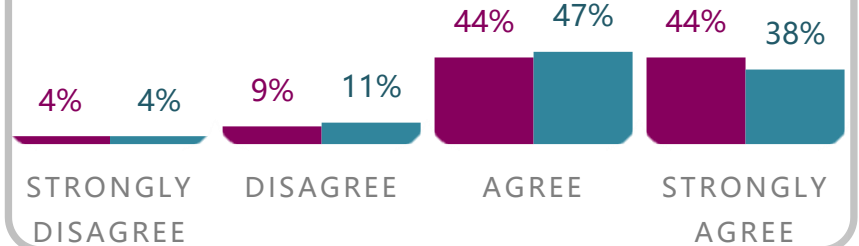
Overall Rating District ES District

45% of parents rating the quality of your school as "excellent".



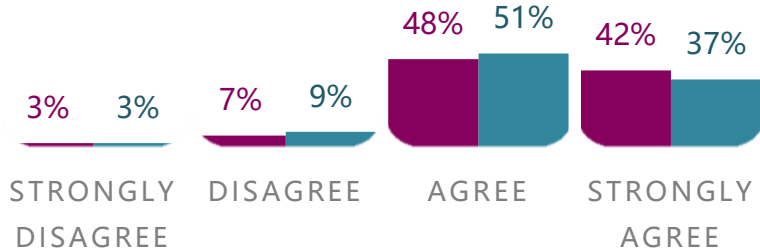
Supportive Place

88% of parents agree that the school is welcoming and supportive of parent involvement.



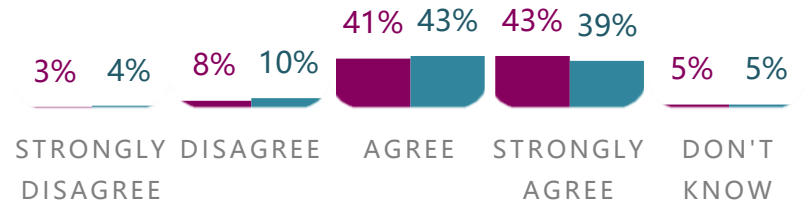
Communication with School

90% of parents agree that their child's school does a good job communicating with them about their child's learning.



Quality Education

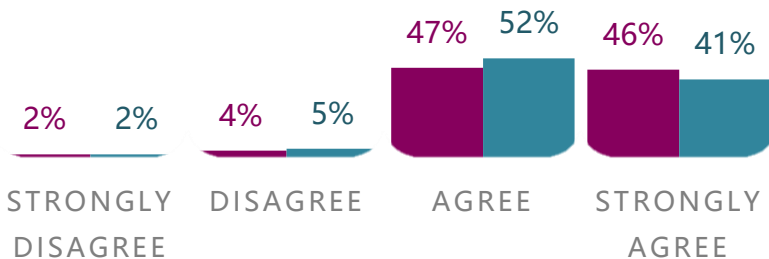
88% of parents agree that their child is receiving a high quality education.



(*Don't Know excluded from caption)

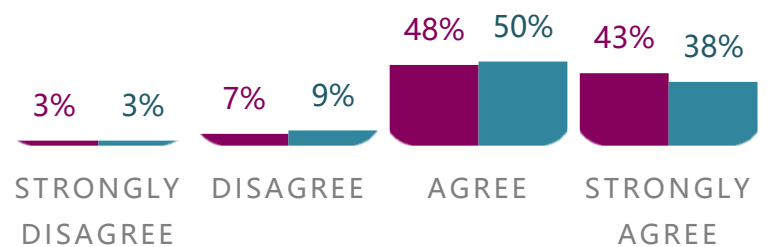
Safety

94% of parents agree that their child feels safe inside and outside the school.



Adult Caring

90% of parents agree that adults at their child's school care how their child is doing.



Numbers may not add up to 100% due to rounding

Parent Climate Individual Items

The tables below show the percentage of parents in your school who provided a response to each question on the survey across response categories.

Note: These questions should be reviewed along with your school's results on each scale on the previous page.

Table 1. Overall Rating	Excellent	Good	Average	Fair	Poor
How would you rate the quality of education your child's school has provided?	45%	38%	11%	3%	2%

Table 2. Supportive Place	Strongly Disagree	Disagree	Agree	Strongly Agree
How much do you agree or disagree with each statement below?				
2a. School employees make me feel welcome at my child's school.	3%	6%	43%	48%
2b. If I need help or have a question, I know whom to talk to at this school.	3%	6%	45%	46%
2c. School employees are polite to me at this school.	3%	5%	43%	49%
2d. The teacher and I work together to create goals for my child.	4%	10%	40%	46%
2e. I have an opportunity to participate in important educational decisions about my child.	4%	10%	44%	42%
2f. My child's school seeks parent input about how to make the school better.	5%	17%	45%	33%
2g. School employees provide quality customer service at this school.	4%	8%	47%	42%

Table 3. School Leadership	Strongly Disagree	Disagree	Agree	Strongly Agree
Table 3a. How much do you agree or disagree with each statement below?				
The Principal makes decisions that are in the best interest of all the children at this school.	4%	8%	49%	38%

Table 3b. Have you had an issue or concern to discuss with the principal or assistant principal this year?	Yes	No
	25%	75%

Table 3c. When I have had an issue or a concern to discuss with the principal or the assistant principal...(answered only if "yes" to Table 3b)	Strongly Disagree	Disagree	Agree	Strongly Agree	Not Applicable
3c1. He or she was available to talk to me.	6%	10%	35%	45%	3%
3c2. He or she was courteous and listened to my concerns.	7%	11%	32%	45%	4%
3c3. He or she responded to my concerns in a professional manner, whether or not he or she agreed with me.	9%	10%	32%	45%	4%

Table 4. Quality Education	Strongly Disagree	Disagree	Agree	Strongly Agree	Don't Know
How much do you agree or disagree with each statement below?					
4a. My child is receiving the kind of instruction that is appropriate for his or her abilities.	4%	9%	45%	40%	3%
4b. My child's teacher(s) set high expectations for my child's individual learning.	3%	8%	42%	43%	4%
4c. My child's teacher(s) provide my child with all of the accommodations needed to do well in his or her classes.	3%	7%	41%	45%	4%
4d. If my child needs extra help, the teacher(s) are available.	3%	7%	38%	43%	9%

Table 5. Communication with School	Strongly Disagree	Disagree	Agree	Strongly Agree
How much do you agree or disagree with each statement below?				
5a. I am kept informed about my child's ongoing learning and progress.	3%	8%	48%	41%
5b. I am kept informed about my child's grades.	2%	5%	48%	45%
5c. My child's teacher(s) are available to discuss my child's learning needs with me.	2%	4%	45%	49%
5d. I am kept informed about my child's behavior.	2%	6%	45%	47%
5e. I am provided sufficient notice about activities like tutoring, after school programs, student performances, parent workshops, and other events.	4%	10%	48%	38%
5f. I am satisfied with the opportunities for me to be involved in my child's school.	3%	7%	50%	40%
5g. Teachers at my child's school update grades and assignments on the Infinite Campus Parent Portal at least twice a month.	3%	8%	51%	37%
5h. Overall, I am satisfied with the communication between this school and me.	4%	7%	48%	41%

Table 6. Adult Caring

How much do you agree or disagree with each statement below?	Strongly Disagree	Disagree	Agree	Strongly Agree
6a. Staff at my child's school care about my child.	2%	7%	49%	42%
6b. My child has at least one staff member at the school in whom they can confide.	2%	7%	48%	42%
6c. The rules and expectations for behavior are the same for every student at my child's school.	5%	10%	48%	37%
6d. My child is treated fairly by all teachers and staff, no matter his/her race, cultural, or family background.	3%	6%	47%	45%
6e. I have at least one staff member I can contact when I want to discuss my child's education.	2%	5%	45%	48%

Table 7. Safety

How much do you agree or disagree with each statement below?	Strongly Disagree	Disagree	Agree	Strongly Agree
7a. My child feels safe inside the school building.	2%	3%	46%	49%
7b. My child feels safe outside, on the school grounds.	2%	5%	49%	44%

Table 8. Drop Off

Table 8a. I am satisfied with the drop-off/pick-up procedures at my child's school. How much do you agree or disagree	Strongly Disagree	Disagree	Agree	Strongly Agree	Not Applicable
	10%	10%	46%	29%	6%

Table 9. Demographic Information

Table 9b. Do you have Internet access at home?		
Yes	No	Choose not to answer
91%	8%	2%

Table 9c. Does your child have internet access at home?		
Yes	No	Choose not to answer
85%	13%	2%

Table 9d. Is your child receiving Special Education services, including gifted and talented?		
Yes	No	Choose not to answer
22%	75%	3%

Table 9e. Is your child receiving English Language Learner (ELL) services?		
Yes	No	Choose not to answer
9%	87%	4%

Table 9f. Are you a district employee?		
Yes	No	Choose not to answer
11%	86%	3%

Table 9g. How could your child's school do a better job of partnering with you in your child's education?	Select all that apply
1. I want more opportunities to volunteer at my child's school.	10%
2. I want more ideas for ways I can support my child's learning at home.	33%
3. I would like more opportunities to partner with my child's teacher to set educational goals for my child.	29%
4. I want more opportunities to understand the process for getting into college.	15%
5. I want more opportunities to understand the transition from Pre-K to elementary school, elementary to middle school or middle school to high school.	21%
6. I want more opportunities to participate in helping to form school policies.	13%
7. None of the above. I am satisfied with the opportunities I have to be involved in my child's education.	43%
8. Other.	7%

Table 9h. What can your child's school do to help you attend classes or events that might interest you?	Select all that apply
1. Provide childcare	19%
2. Provide transportation	6%
3. Provide interpreters	7%
4. Personally invite you	8%
5. Make me feel welcome at the school	12%
6. Send notices about classes or events earlier	29%
7. Improve quality of classes or events	12%
8. Hold events after school/work hours	29%
9. Not applicable. I already attend all of the classes or school events I am interested in attending.	45%

Table 9i. How many children do you have attending this school?

1. 1	66%
2. 2	28%
3. 3	5%
4. 4	1%
5. 5 or more	0%

Table 9j. In what grade(s) are your child(ren) currently in at this school?

1. Pre-Kindergarten	5%	8. 6th	11%
2. Kindergarten	22%	9. 7th	1%
3. 1st	20%	10. 8th	1%
4. 2nd	19%	11. 9th	1%
5. 3rd	21%	12. 10th	1%
6. 4th	19%	13. 11th	1%
7. 5th	18%	14. 12th	1%

Table 9k. What is your relationship to the child(ren)?

1. Father	18%
2. Mother	78%
3. Stepfather	0%
4. Stepmother	0%
5. Grandfather	0%
6. Grandmother	2%
7. Uncle	0%
8. Aunt	0%
9. Guardian	1%
10. Other	1%

Table 9l. Does your child receive free or reduced lunch?

1. Yes	35%
2. No	63%
3. Choose Not to Answer	3%

Table 9m. What is the highest level of education any member of your household has obtained?

1. No schooling completed or less than 1 year	0%
2. Kindergarten, elementary and middle school (grades 1-8)	4%
3. Some high school	5%
4. Graduated high school	11%
5. Some college	18%
6. Associate's degree (including occupational or academic degrees)	12%
7. Bachelor's Degree (BA, BS)	25%
8. Master's Degree (MA, MS)	19%
9. Doctorate Degree (PhD, EdD)	6%

Table 9n. My school tries to communicate with me in my native language.

Strongly Disagree	Disagree	Agree	Strongly Agree	Not Applicable
6%	4%	27%	35%	27%

Table 9o. What is your race or ethnicity?

1. Multi-racial	5%
2. Asian	5%
3. Black or African American	1%
4. Hispanic or Latino	25%
5. Native American	2%
6. Pacific Islander	1%
7. White	60%

Table 9p. What are the best ways for the school to communicate with you about your child's education?

1. Mail	25%
2. Email	76%
3. Telephone	62%
4. Text messages	64%
5. Website	10%
6. Infinite Campus Parent Portal	26%
7. Face-to-face meetings	42%
8. Notices brought home by student	42%
9. Teachers contact me	43%
10. Principal contacts me	20%
11. Social media	6%
12. Counselors contact me	16%
13. Other	1%

Table 9q. What is the best day of the week for you to attend school workshops or events?

1. Monday	41%
2. Tuesday	43%
3. Wednesday	46%
4. Thursday	43%
5. Friday	40%
6. Saturday	28%
7. Sunday	16%

Table 9r. What is the best time of day for you to attend school workshops or events?

1. 9 a.m. and 12 noon	28%
2. 12 noon and 2 p.m.	19%
3. 2 p.m. and 4 p.m.	19%
4. 4 p.m. and 6 p.m.	46%
5. After 6 p.m.	45%