

2015 Climate Survey Scale Scores

Teacher and Staff

District HS



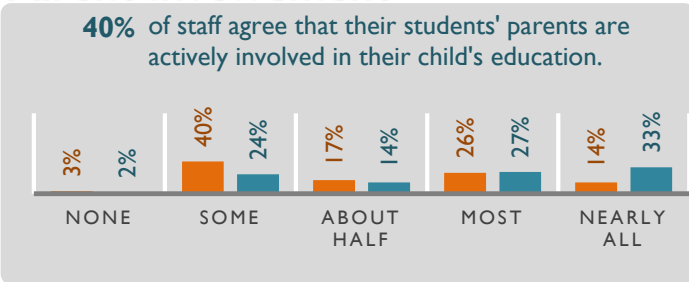
Number of Surveys Returned **981**

The charts on this page display the % of staff who marked each response option across all questions in a scale. The caption below each chart represents the percentage of "Agree"/"Strongly Agree" or "Most"/"Nearly All" responses across all items in a scale. The tables on the next pages display the results of all survey questions and which items are included in each scale.

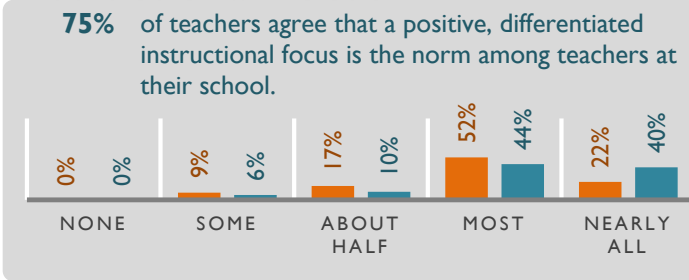
Fairness and Respect



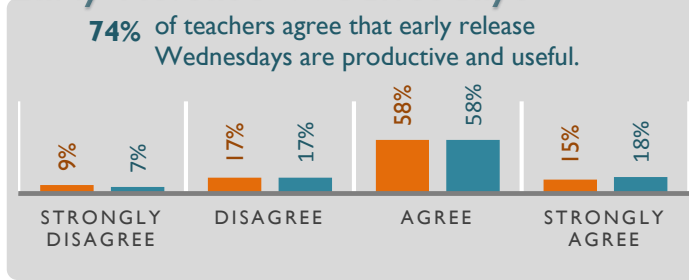
Parent Involvement



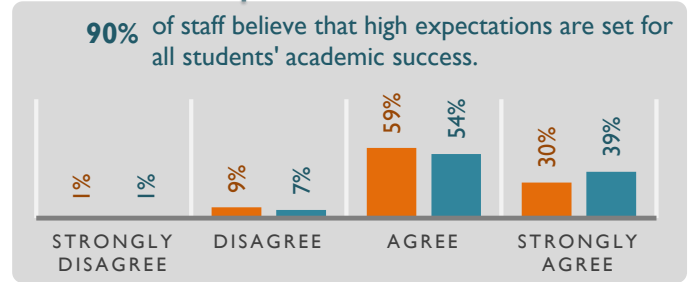
Instructional Focus



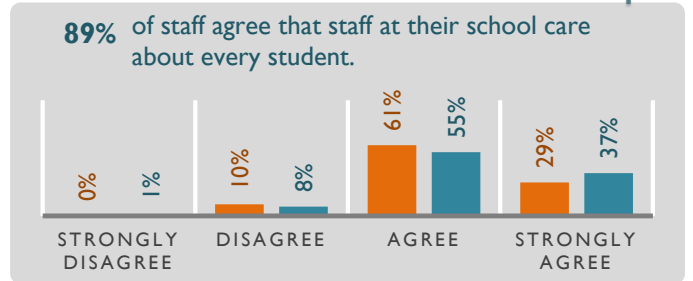
Early Release Wednesdays



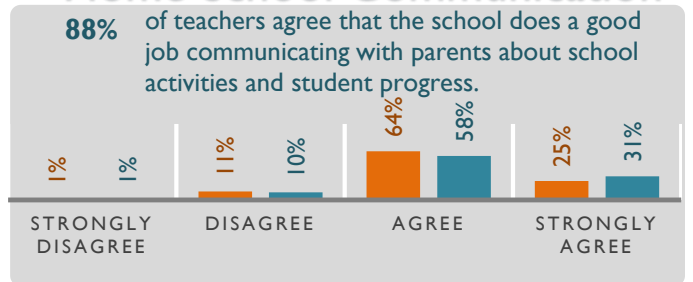
Expectations of Success



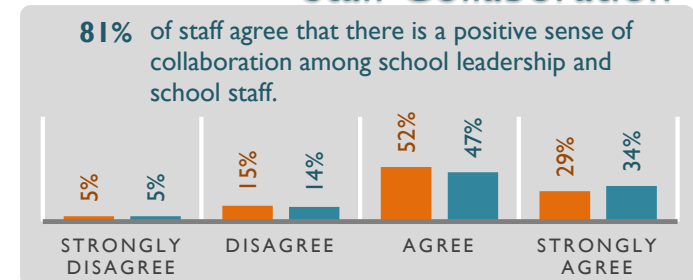
Staff-Student Relationships



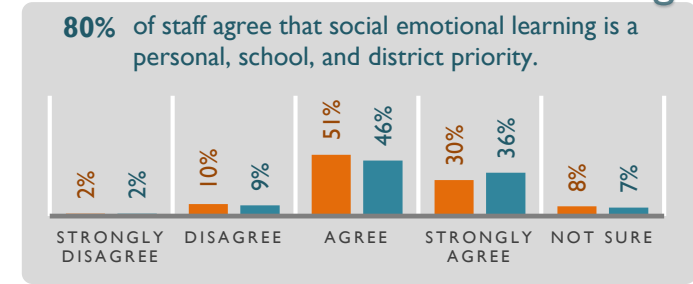
Home-School Communication



Staff Collaboration



Social Emotional Learning



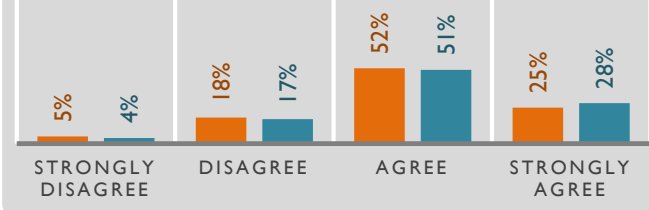
Numbers may not add up to 100% due to rounding

2015 Climate Survey Scale Scores

Teacher and Staff

Physical Environment

77% of staff agree that their school is clean and well-maintained.

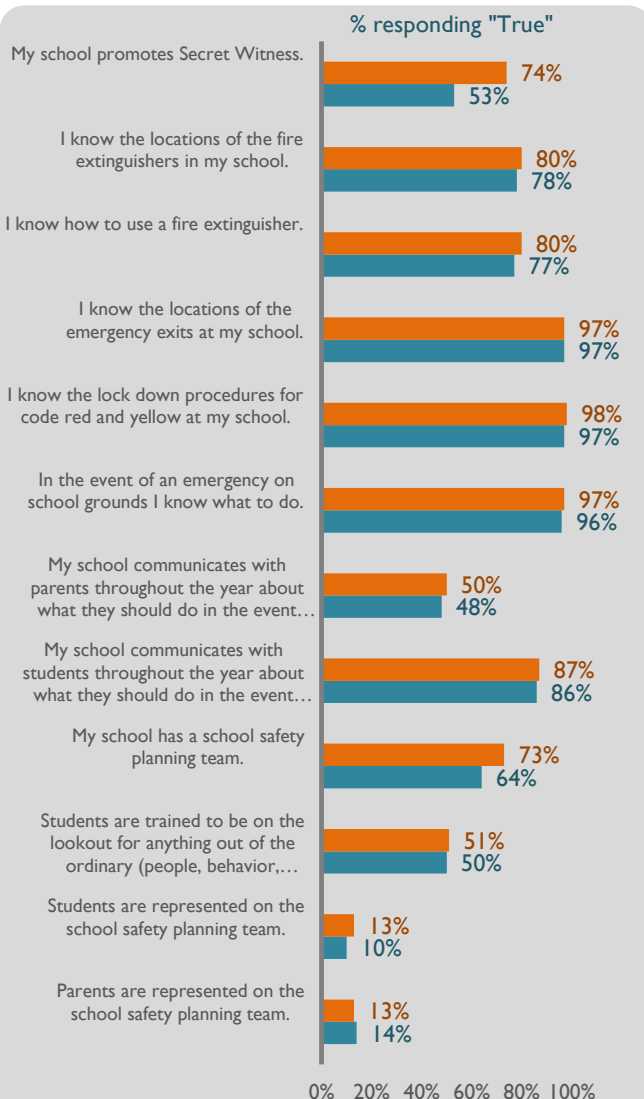


Perception of Safety

95% of staff agree that their school is safe.

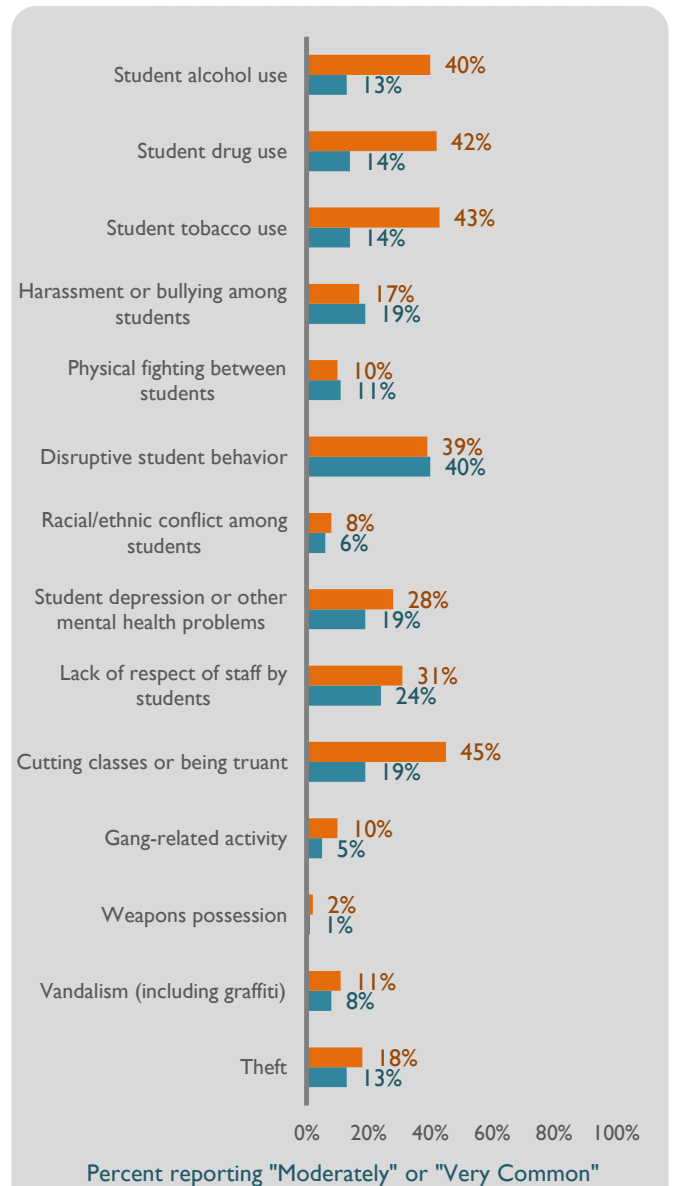


Safety Knowledge*



* "Don't Know" was added as a response option in 2014

How common are the following behaviors at this school?



Numbers may not add up to 100% due to rounding

2015 Climate Survey Scale Scores

Teacher and Staff

Teacher and Staff Climate Individual Items

The tables below show the percentage of staff in your school who provided a response to each question on the survey across response categories.

Note: These questions should be reviewed along with your school's results on each scale on the previous page.

Table 1. Parent Involvement (Teachers Only)	None	Some	About Half	Most	Nearly All
1a -How many of your students' parents/guardians attended parent-teacher conferences when you requested them?	3%	23%	9%	35%	30%
1b -How many of your students' parents/guardians support your teaching efforts?	1%	17%	13%	50%	19%
1c -How many of your students' parents/guardians have asked you about ways they can support their child's learning at home?	12%	65%	14%	7%	2%
1d -How many of your students' parents/guardians know how well their child is doing in your class?	1%	30%	29%	30%	10%
1e -How many of your students' parents have you met?	1%	64%	19%	8%	8%

Table 2. Instructional Focus (Teachers Only)	None	Some	About Half	Most	Nearly All
How many teachers in this school...					
2a-Emphasize teaching lessons in ways that are relevant to students.	0%	5%	13%	59%	23%
2b-Focus instruction on learning, not just remembering facts.	0%	5%	16%	56%	23%
2c-Take responsibility for ensuring that all students master grade level objectives.	0%	5%	16%	58%	22%
2d-Effectively differentiate instruction to meet the needs of students at all achievement levels.	0%	10%	23%	50%	17%
2e-Take responsibility for ensuring that the needs of students with special instructional requirements are addressed.	0%	7%	14%	52%	27%
2f-Communicate with each other to make student learning consistent across classes within the same grade level.	0%	13%	16%	46%	24%
2g - Communicate with each other to make student learning consistent across grade levels.	1%	15%	17%	46%	21%

Table 3. Use of Early Release Wednesdays (Teachers Only)	How are you using the time?	What is the most useful?
Grade-Level Meetings	23%	17%
Department Meetings	91%	57%
Collaboration Within Disciplines	57%	45%
Committee Meetings	20%	3%
School-Wide Meetings	59%	12%
Mentor Meetings	3%	1%
Independent Work/Preparation Time	23%	28%
Trainings from Central Office	16%	3%
Other	11%	8%

2015 Climate Survey Scale Scores

Teacher and Staff

Table 4. Early Release Wednesdays (Teachers Only)	Strongly Disagree	Disagree	Agree	Strongly Agree
4a-I am satisfied with the amount of time provided on early release Wednesdays.	9%	14%	62%	15%
4b-The time provided for early release Wednesdays is used productively.	11%	20%	54%	16%
4c-I apply the knowledge that I gain from participation in early release Wednesdays in my classroom practice.	8%	16%	60%	16%
4d-The discussion focus of early release Wednesdays is consistent over time.	10%	20%	56%	14%

Table 5. Social and Emotional Learning Curriculum	Yes, in all grade levels	Yes, in some grade	No, not for any grade level	I don't know
5a. Does your school follow an established written social and emotional learning curriculum?	25%	15%	16%	44%

Table 6. Social and Emotional Learning Support	Strongly Disagree	Disagree	Agree	Strongly Agree	Don't Know
6a. (Teachers Only; If yes to question 5) I feel confident in my ability to implement the social and emotional learning curriculum that has been adopted at my school.	7%	8%	56%	23%	6%
6b. The adults in this school interact with one another in a way that models social and emotional competence.	2%	9%	52%	33%	4%
6c. The adults in this school are expected to actively promote students' social and emotional development.	1%	5%	53%	35%	5%
6d. All staff are expected to address students' social and emotional needs.	1%	8%	52%	32%	7%
6e. The adults in this school interact with students in a way that supports students' social and emotional skills.	1%	7%	56%	31%	5%
6f. The culture at my school supports social and emotional learning.	2%	7%	53%	33%	5%
6g. The culture in the district supports the development of students' social and emotional skills.	4%	9%	56%	19%	12%
6h. My school has developed a vision for academic, social, and emotional learning.	2%	13%	44%	29%	13%
6i. The vision for academic, social and emotional learning has been communicated to all school staff.	4%	19%	42%	24%	11%

Table 7. Expectations of Success	Strongly Disagree	Disagree	Agree	Strongly Agree
7a. Staff at my school set high expectations for students' achievement.	1%	6%	57%	36%
7b. Staff at my school do not allow students to give up in class.	1%	16%	61%	22%
7c. Staff at my school work hard to motivate students who show low interest in school work.	1%	9%	62%	28%
7d. Staff at my school work hard to make sure that students stay in school.	1%	6%	57%	36%

2015 Climate Survey Scale Scores

Teacher and Staff

Table 8. Fairness and Respect	Strongly Disagree	Disagree	Agree	Strongly Agree
8a. Staff respect all students at my school.	1%	12%	61%	26%
8b. Staff are professional when speaking of each other and/or administrators.	2%	14%	59%	25%
8c. Students of different social backgrounds get along well at my school.	1%	9%	62%	29%
8d. The rules and expectations about how students should behave at my school are fair.	2%	7%	56%	35%
8e. The rules and expectations about student behavior are enforced equally by staff.	9%	30%	46%	14%
Table 9. Staff-Student Relationships	Strongly Disagree	Disagree	Agree	Strongly Agree
9a. Teachers and staff at my school care about every student.	0%	9%	60%	31%
9b. Teachers and staff at my school listen to students' ideas and opinions.	0%	7%	67%	26%
9c. Teachers and staff at my school talk openly to students about school issues.	1%	9%	64%	26%
9d. Every single student at our school knows at least one staff member who would help them with a personal problem.	0%	12%	57%	31%
9e. Every single student at our school knows at least one staff member who would care if they were not in school.	0%	14%	56%	30%
Table 10. Home-School Communication	Strongly Disagree	Disagree	Agree	Strongly Agree
10a. Staff at my school believe that parents are partners in the educational process.	1%	8%	61%	31%
10b. My school is welcoming to parents.	1%	4%	59%	37%
10c. When staff at my school contact parents, it is usually to discuss problems with their child's behavior or academic progress.	0%	13%	70%	16%
10d. Staff at my school are expected to provide parents with ways to support their child's learning at home.	1%	15%	67%	17%
10e. Staff at my school frequently update parents/guardians about their child's progress in their classrooms.	1%	15%	62%	23%
Table 11. Staff Collaboration	Strongly Disagree	Disagree	Agree	Strongly Agree
11a. There is a sense of teamwork among all school staff.	4%	18%	56%	23%
11b. The school leadership makes a sustained effort to address staff concerns.	6%	18%	49%	28%
11c. Staff at my school are recognized and appreciated for good work.	5%	16%	54%	25%
11d. The school leadership makes sure that staff are involved in making plans and decisions that affect this school.	6%	17%	53%	24%
11e. The school leadership makes sure that my administrative duties do not interfere with my essential role of educating students.	7%	20%	53%	21%
11f. I feel comfortable raising issues and concerns that are important to me at my school.	6%	17%	49%	28%
11g. I feel supported by my administrator.	6%	12%	45%	37%

2015 Climate Survey Scale Scores

Teacher and Staff

I 1h. My school provides me with the materials and resources needed to provide support for students of all abilities.	4%	17%	55%	24%
I 1i. I feel school leadership is clear about what my job is at this school.	4%	13%	52%	31%
I 1j. Staff are proud to work at this school.	2%	7%	53%	38%
I 1k. I look forward to coming to this school every day.	2%	9%	49%	40%

Table 12. Physical Environment	Strongly Disagree	Disagree	Agree	Strongly Agree
I 2a. My school building is clean.	2%	7%	47%	45%
I 2b. The temperature in my school is comfortable all year round.	7%	28%	46%	19%
I 2c. The bathrooms in my school are clean.	2%	9%	57%	32%
*I 2d. A lot of equipment at my school is broken or outdated.	12%	50%	28%	10%
*I 2e. Vandalism of school property is a problem at my school.	19%	59%	18%	4%

**Items were reverse-coded to build the "Physical Environment" scale score.*

Table 13. Perception of Safety	Strongly Disagree	Disagree	Agree	Strongly Agree
I 3a. I feel safe inside my school.	1%	3%	53%	44%
I 3b. I feel safe outside around my school.	1%	4%	56%	40%
I 3c. I feel safe leaving my school even when I am there late or on the weekends.	1%	6%	55%	39%

Table 14. Student Behaviors	Not at All Common	Somewhat Common	Moderately Common	Very Common
I 4a. student alcohol use	18%	41%	30%	10%
I 4b. student drug use	14%	44%	31%	11%
I 4c. student tobacco use	14%	43%	29%	14%
I 4d. harassment or bullying among students	29%	53%	15%	2%
I 4e. physical fighting between students	46%	44%	9%	1%
I 4f. disruptive student behavior	16%	46%	25%	14%
I 4g. racial/ethnic conflict among students	53%	40%	7%	1%
I 4h. student depression or other mental health problems	19%	53%	21%	7%
I 4i. lack of respect of staff by students	29%	41%	19%	12%
I 4j. cutting classes or being truant	12%	43%	26%	19%
I 4k. gang-related activity	54%	36%	8%	2%
I 4l. weapons possession	75%	23%	2%	0%
I 4m. vandalism (including graffiti)	47%	42%	9%	2%
I 4n. theft	37%	46%	13%	5%

2015 Climate Survey Scale Scores

Teacher and Staff

Table 15. Safety Knowledge	TRUE	FALSE	Don't Know
I5a. My school promotes Secret Witness.	74%	8%	18%
I5b. I know the locations of fire extinguishers in my school.	80%	13%	7%
I5c. I know how to use a fire extinguisher.	80%	15%	5%
I5d. I know the locations of the emergency exits at my school.	97%	1%	1%
I5e. I know the lock down procedures for code red and yellow at my school.	98%	1%	1%
I5f. In the event of an emergency on school grounds I know what to do.	97%	2%	2%
I5g. My school communicates with parents throughout the year about what they should do in the event of a school emergency.	50%	8%	42%
I5h. My school communicates with students throughout the year about what they should do in the event of a school emergency.	87%	4%	9%
I5i. My school has a school safety planning team.	73%	3%	24%
I5j. Students are trained to be on the lookout for anything out of the ordinary (people, behavior, containers, broken air vents, vehicles, etc.).	51%	18%	31%
I5k. Students are represented on the school safety planning team.	13%	11%	76%
I5l. Parents are represented on the school safety planning team.	13%	10%	77%