

# Leadership Pathway Project Committee Fall 2022

## Background/Updates

*Thank you for your interest in participating in the Leadership Pathway Project (LPP)! In spring of 2022, the committee agreed to the following 6 competencies (underlying components/elements listed on the accompanying document).*

### Agreed Upon Competencies



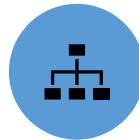
Vision and Strategy



Instructional Expertise



People and Culture



Operations and Organization



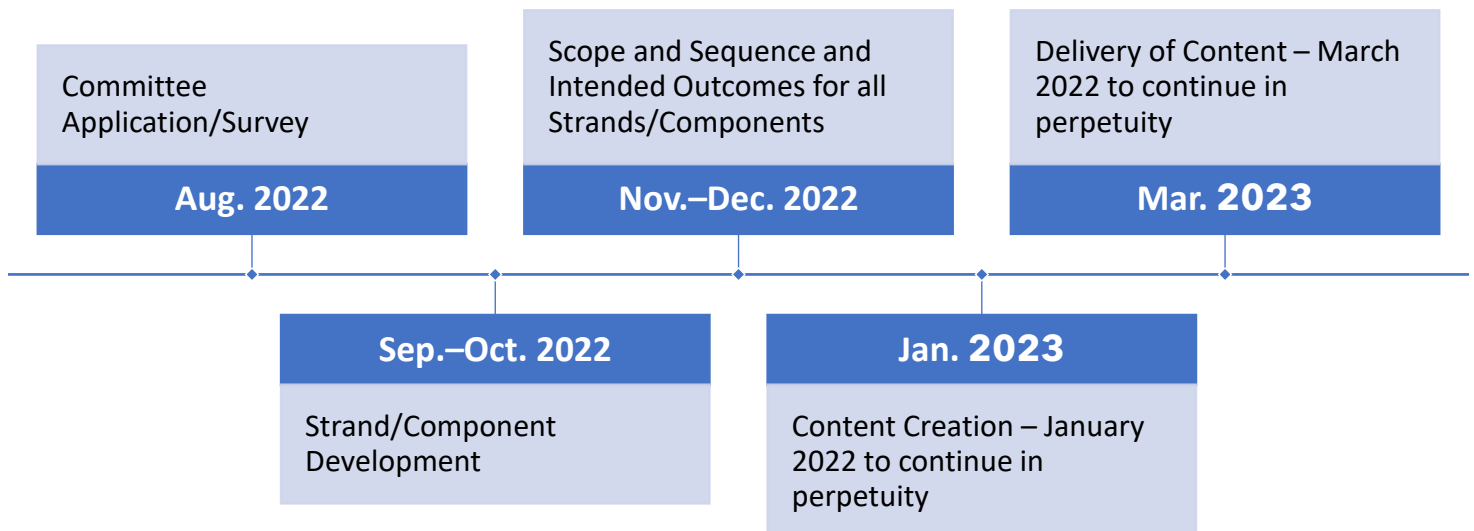
Community and Equity



Personal Values

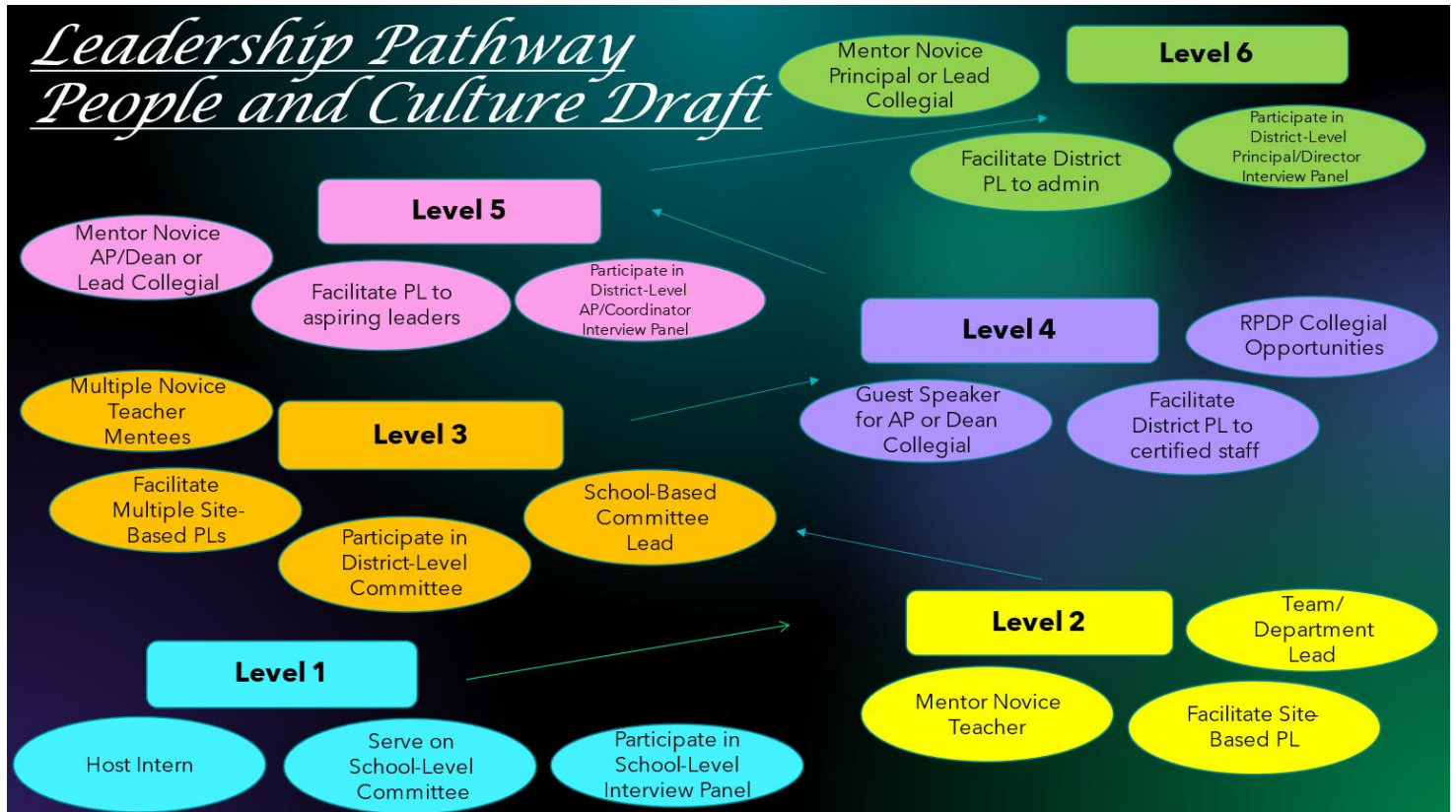
To better guide the work of the committee, we will have 3 major foci: strand/component development, content/coursework development, and content/coursework delivery.

### Proposed Timeline\*



- 1. Strand/Component Development** – *this sub committee will work to define core experiences and content necessary to fulfill the needs of the competency strand. (Scope and sequence for each competency)*

A preliminary example for the People and Culture Strand addressing capacity building:



- 2. Content/Coursework Development** – *Once a strand/component is developed under a competency, this sub committee will work to develop content and coursework relevant to increasing levels of competency for that strand/component.*

For example, looking at the mentorship strand/component above, there could be coursework developed around mentoring administrators.

- 3. Content/Coursework Delivery** – *Once the content/coursework for a strand/component is developed under a competency, this sub committee will deliver the professional learning opportunities to current and aspiring administrators.*

For example, looking at the mentorship strand/component above, this sub committee would lead the course on Foundations of Mentoring for Administrators which would run for a 6-week cycle.

## **LPP Application Fall 2022**

Given the information provided above, please answer the following questions:

<https://forms.office.com/r/Rpg49NLc0n>

The PGS and OSL vetting team will use the artifacts to place individuals. Individuals placed in the content delivery portion will be asked to present a mock professional learning opportunity. Additional information and a rubric will be provided at a later date.