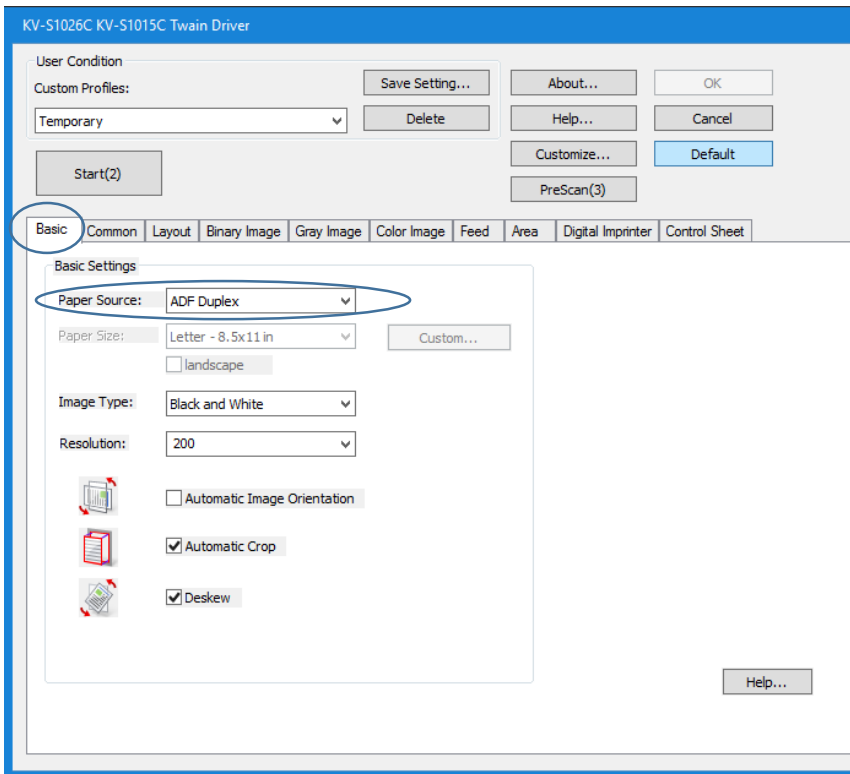


Typical **ExpressScan** scanner settings:

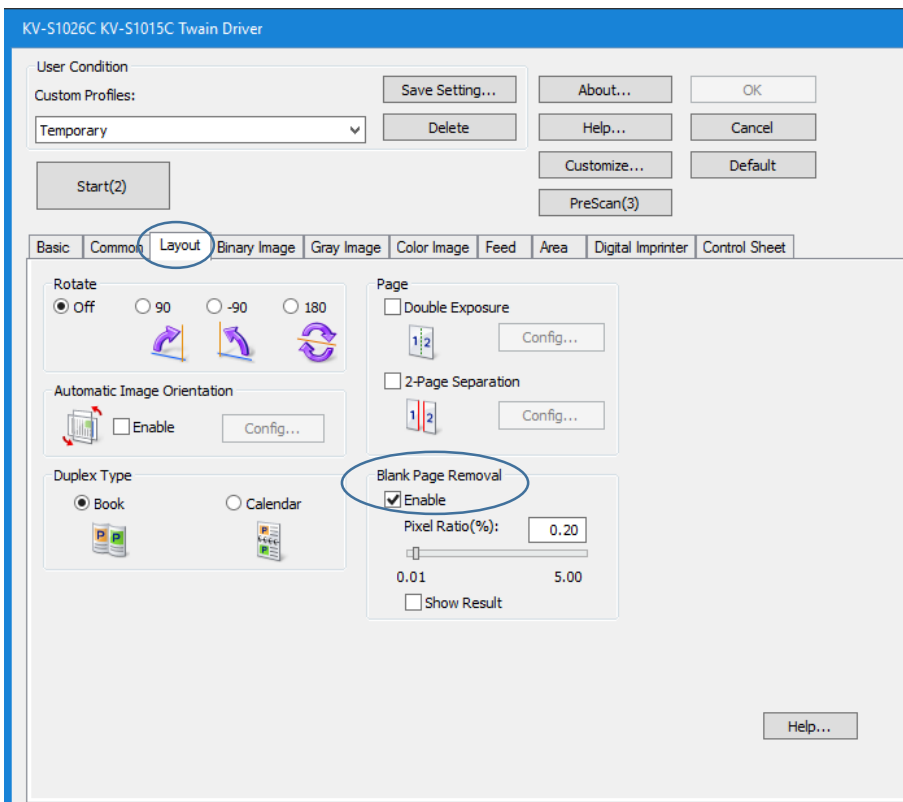
Suggested settings: "**Paper Source: ADF Duplex**" - To eliminate blank pages – see **Layout** Tab below

Basic Tab:



Layout Tab:

To eliminate blank pages – ensure "Blank Page Removal" is checked



Some scanned documents are too dark – generally reported with Birth Certificates. If this is the case, another option may be selected instead of B/W or Color

Image Type: can be changed to 256-Level Gray for example

