

Options

- Districts B, C, E, F and G remain well within an allowable population range of “Ideal” and it is an option make no adjustments to these existing Trustee District Boundaries
- Districts A and D are currently outside of the allowable population range of “Ideal” and Staff has multiple options for Trustee District Boundary line adjustments to consider.
- Districts F and G are the next least evenly populated Districts, so staff is presenting an option to adjust these boundaries for consideration

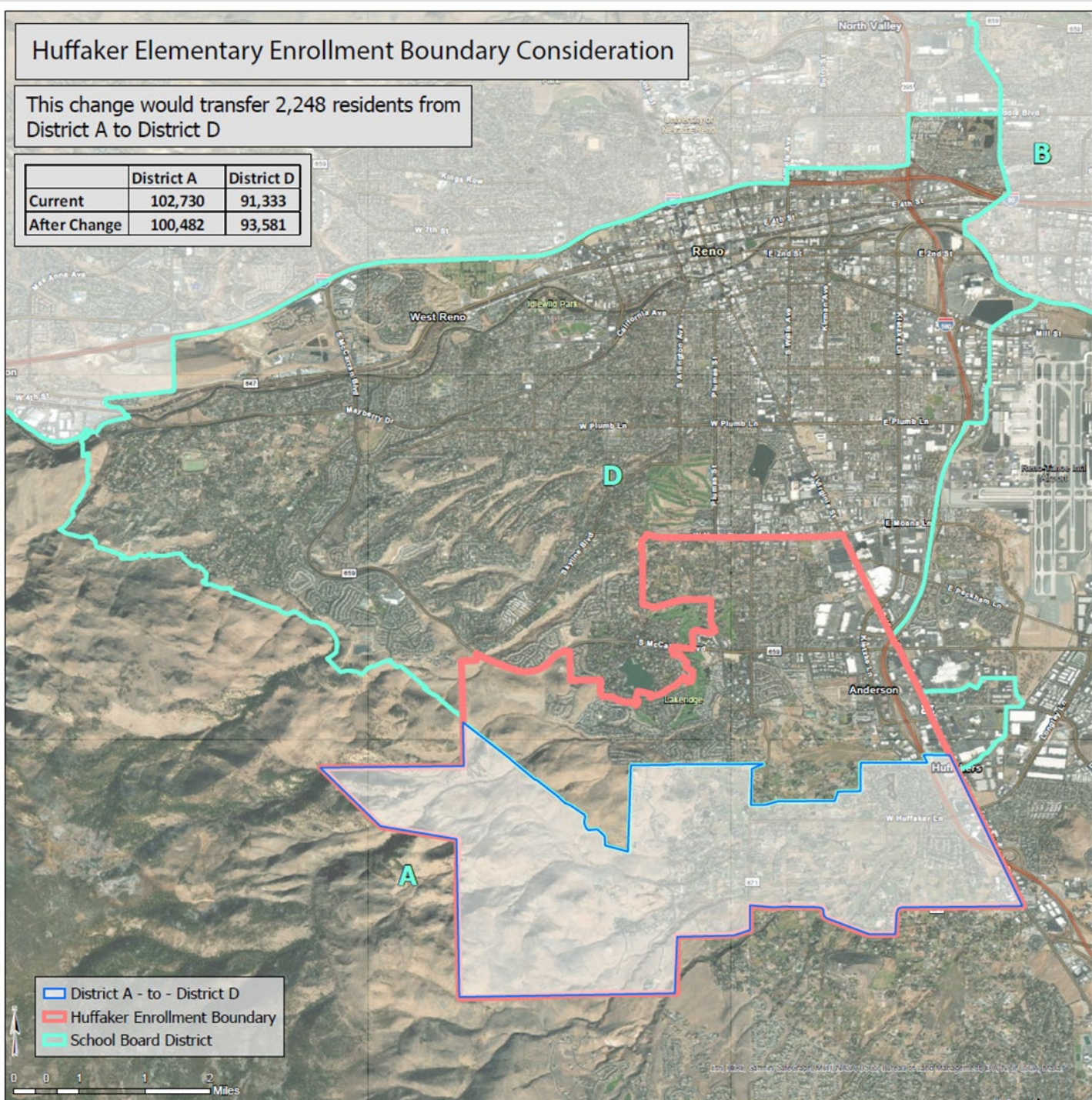


Options

- Option 1 - Include all of the Huffaker ES enrollment zone in District D.
 - Currently, the Huffaker enrollment zone is split between A & D

District	Current DFE	After DFE	Change of DFE
A	5.58%	3.27%	-2.31%
D	-6.13%	-3.82%	2.31%

Difference From Equal - DFE

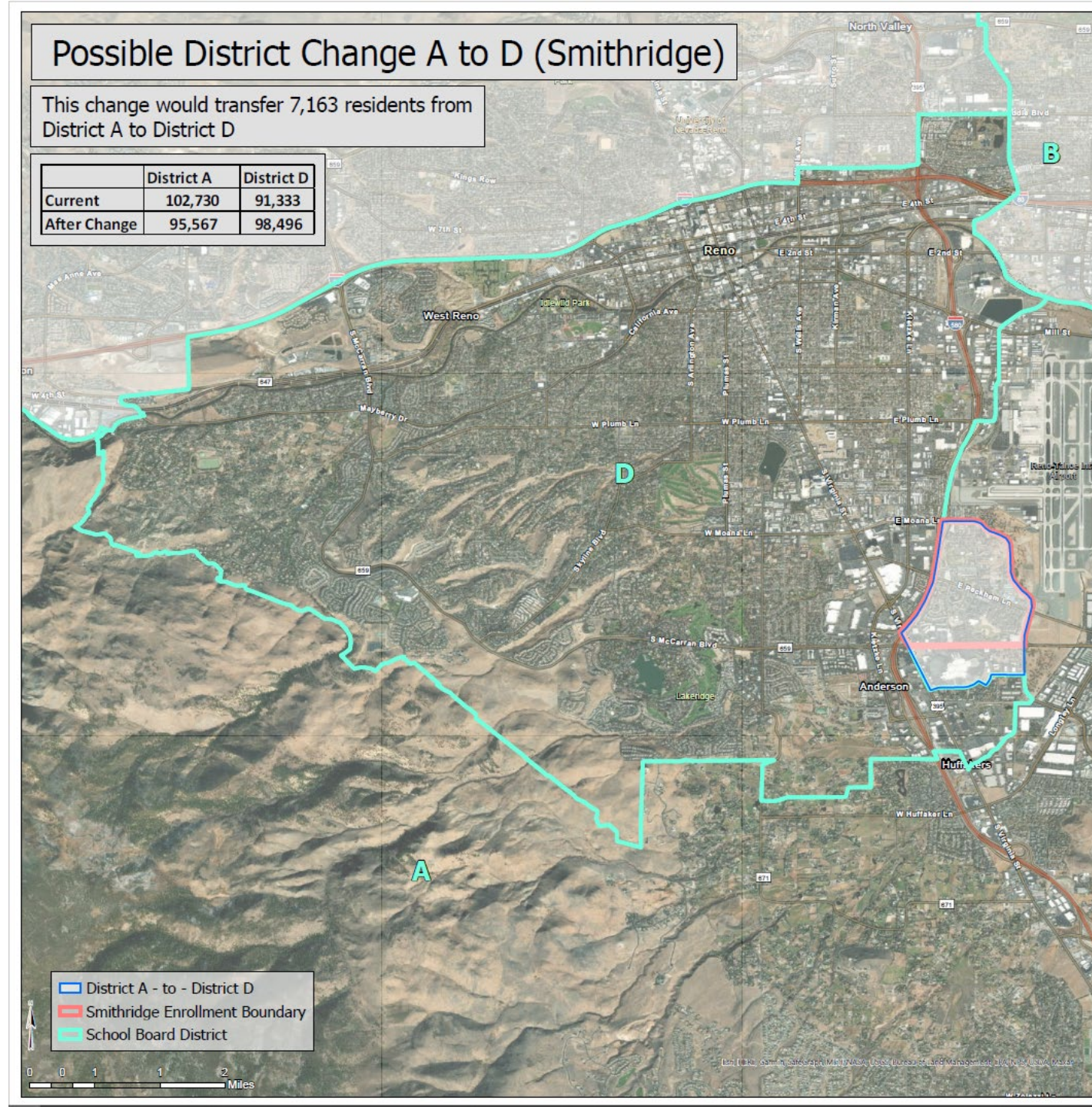


Options

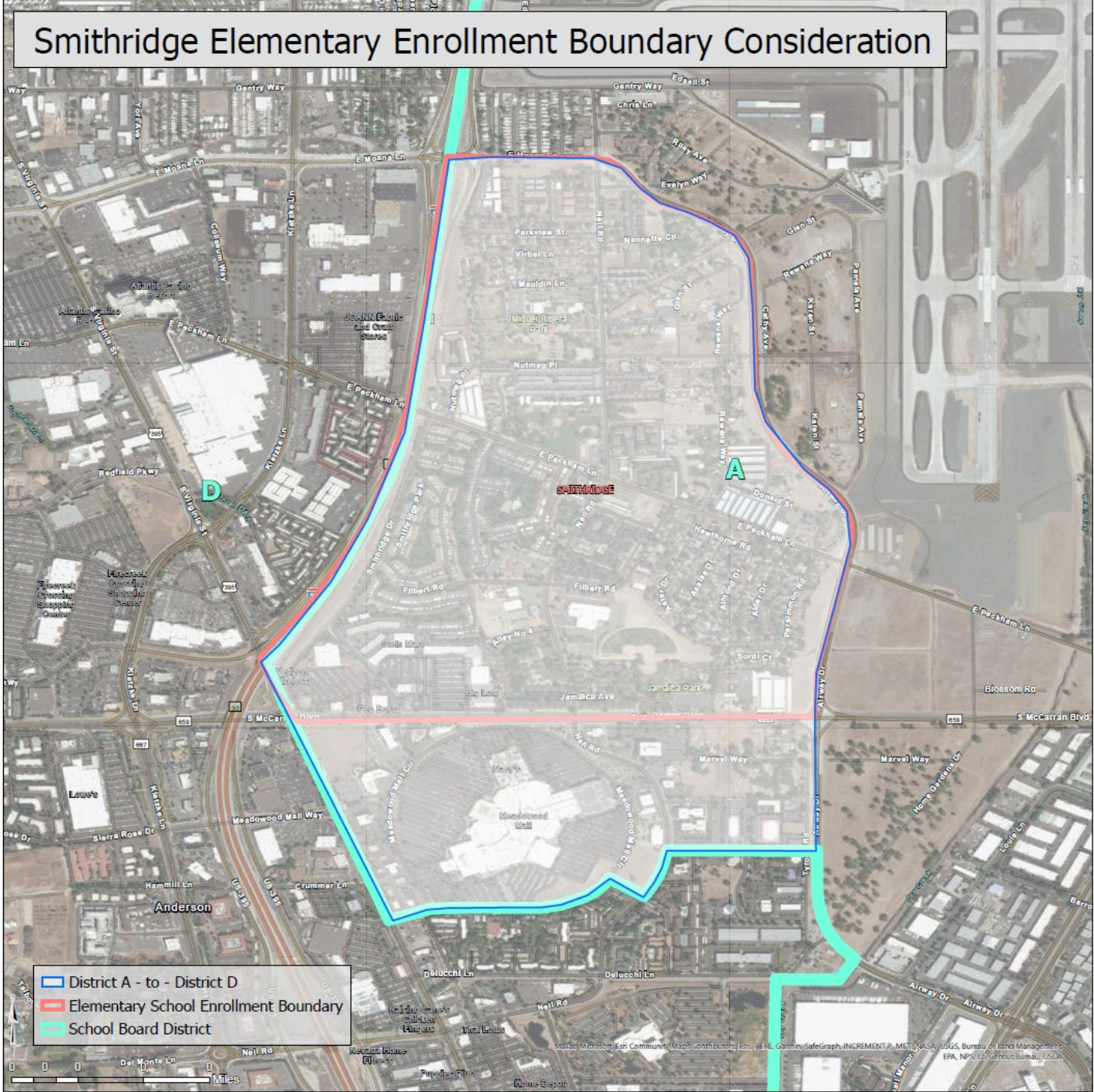
- Option 2 – Include all of the Smithridge ES enrollment zone from District A to District D

District	Current DFE	After DFE	Change of DFE
A	5.58%	-1.78%	-7.36%
D	-6.13%	1.23%	7.36%

Difference From Equal - DFE



Option 2

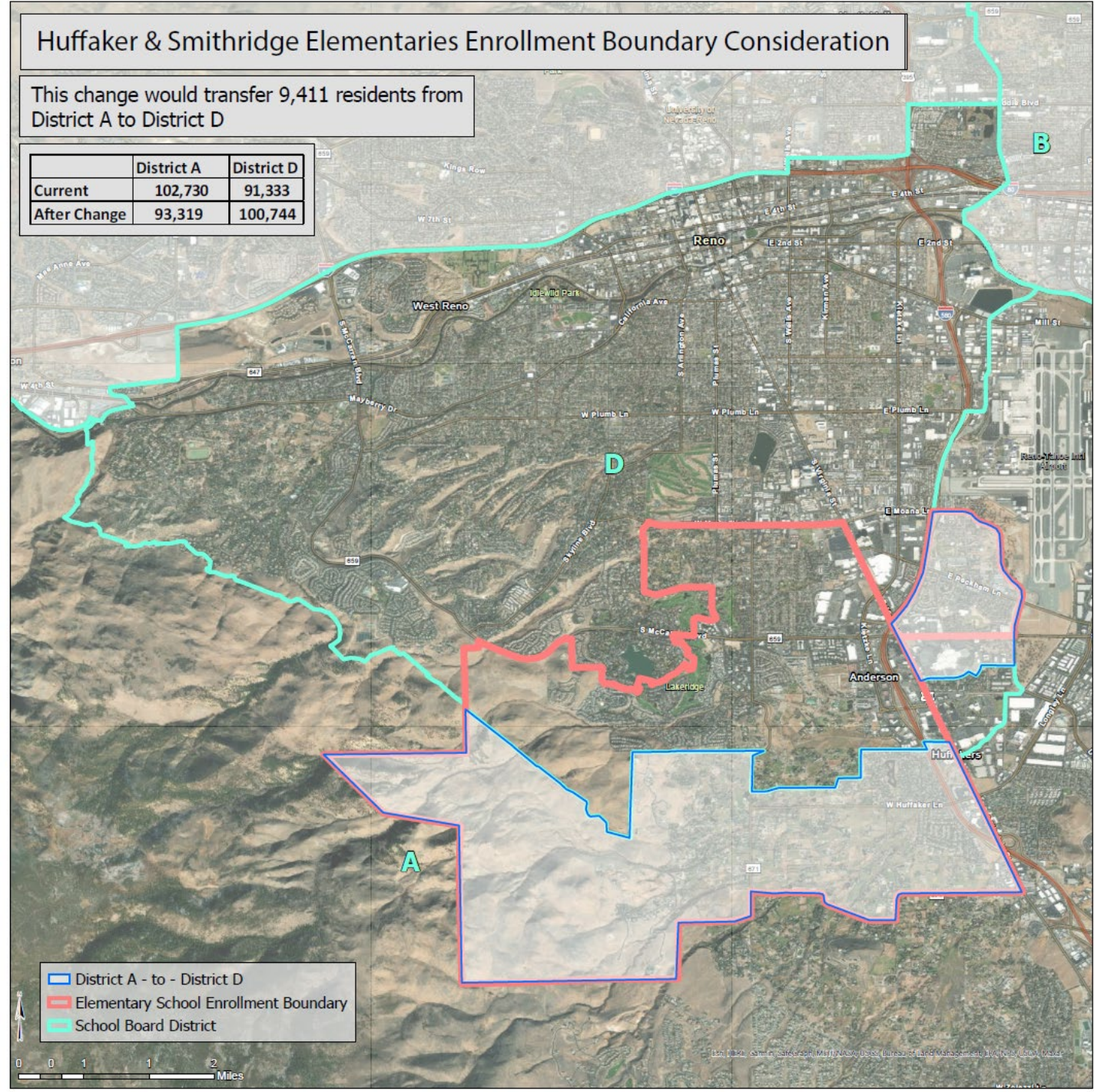


Options

- Option 3 – move both Huffaker ES and Smithridge ES enrollment zones into District D

District	Current DFE	After DFE	Change of DFE
A	5.58%	-4.09%	-9.67%
D	-6.13%	3.54%	9.67%

Difference From Equal - DFE



Option Summary - District A to D

- Option 1 – Huffaker ES enrollment boundary
- Option 2 – Smithridge ES enrollment boundary
- Option 3 – both Huffaker ES and Smithridge ES enrollment boundaries

Option 1	Current DFE	After DFE	Change of DFE
A	5.58%	3.27%	-2.31%
D	-6.13%	-3.82%	2.31%

Option 2	Current DFE	After DFE	Change of DFE
A	5.58%	-1.78%	-7.36%
D	-6.13%	1.23%	7.36%

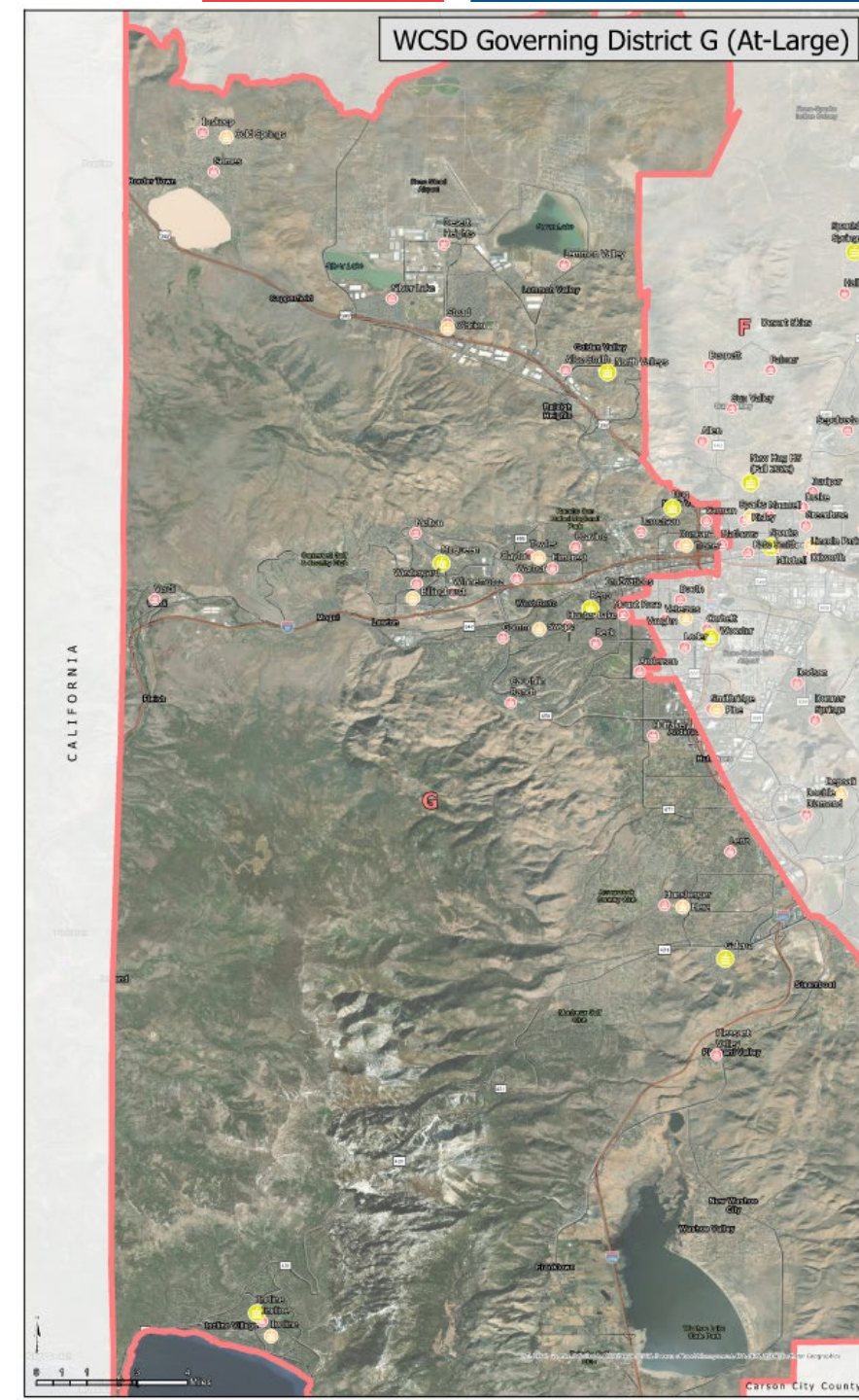
Option 3	Current DFE	After DFE	Change of DFE
A	5.58%	-4.09%	-9.67%
D	-6.13%	3.54%	9.67%



Options – District F and G

- Option 1- no change

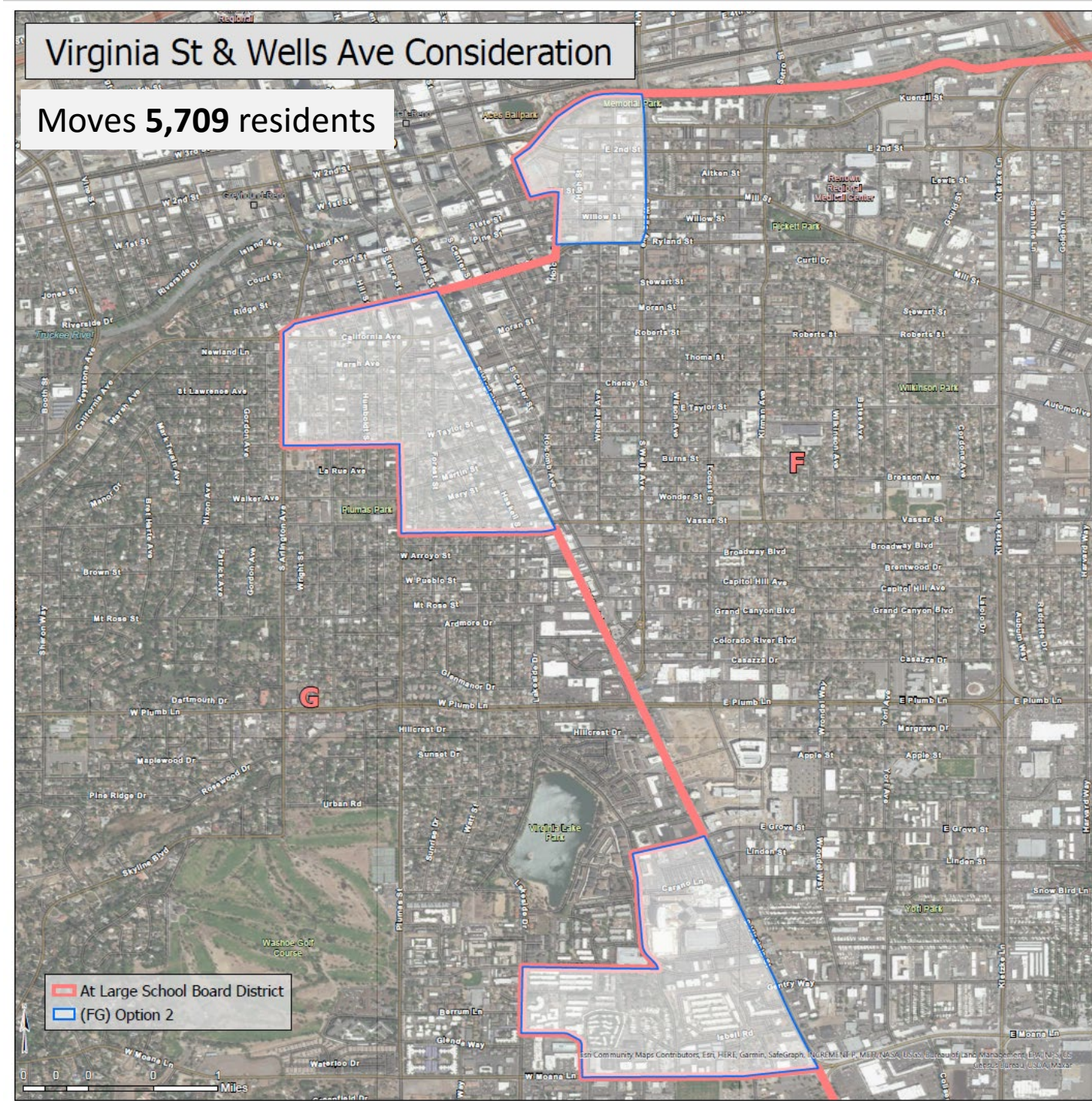
District	Current DFE	After DFE	Change of DFE
F	-3.01%	-3.01%	---
G	3.01%	3.01%	---



Options – District F to G

- Option 2 – Virginia & Wells pockets

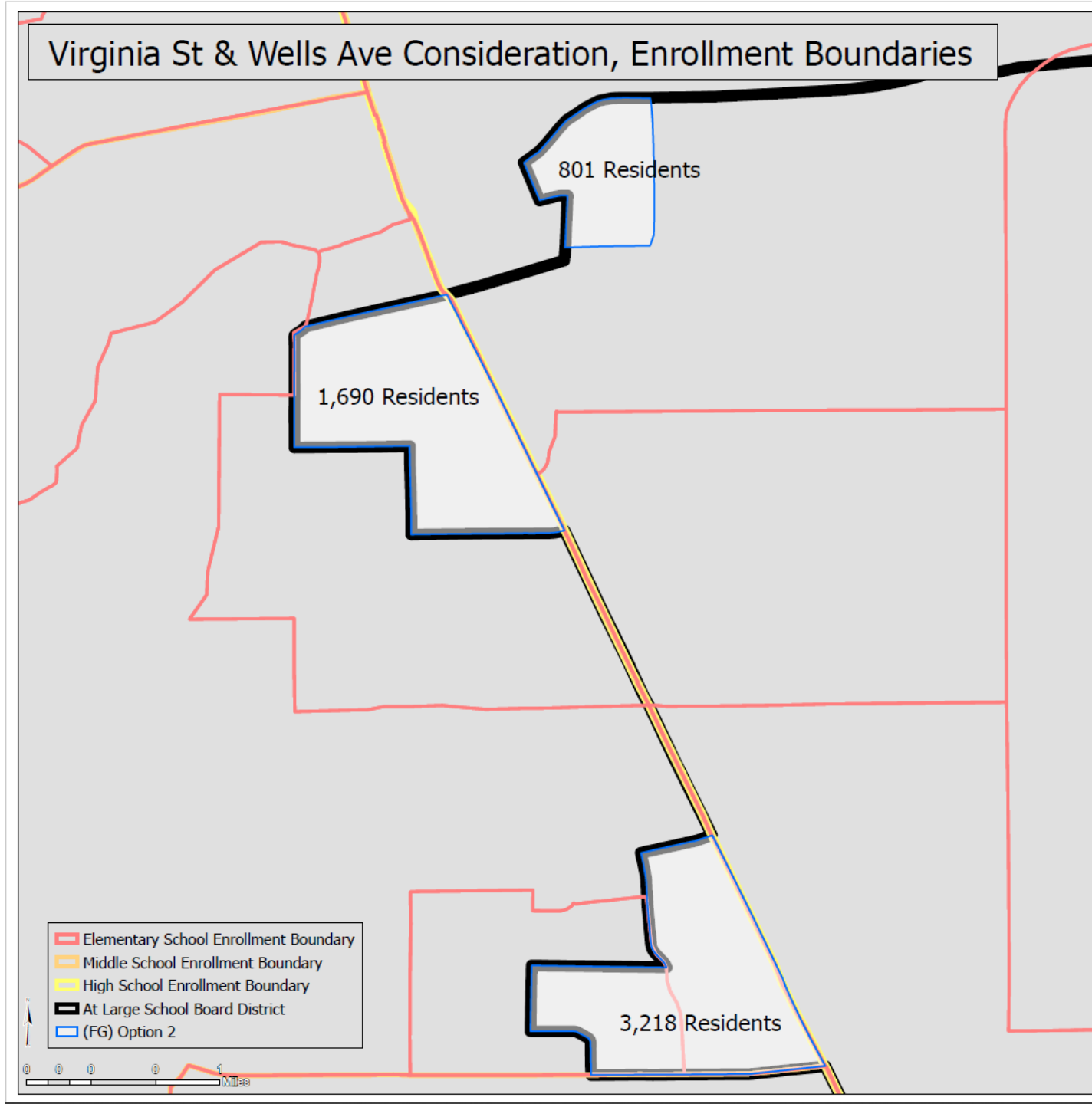
District	Current DFE	After DFE	Change of DFE
F	-3.01%	0.66%	3.67%
G	3.01%	-0.66%	-3.67%



Options – District F to G

- District F to District G – Option 2

Moves **5,709 total** residents



Options

- Districts B, C, and E – Recommendation No Change

			20%
2020 TOTAL POPULATION	486,492	97,298	
	Minetto	Rodriguez	Taylor
	B	C	E
2020 Census Population	96,398	99,720	96,311
Difference from Equal	(900)	2,422	987
%	-0.93%	2.49%	1.01%

