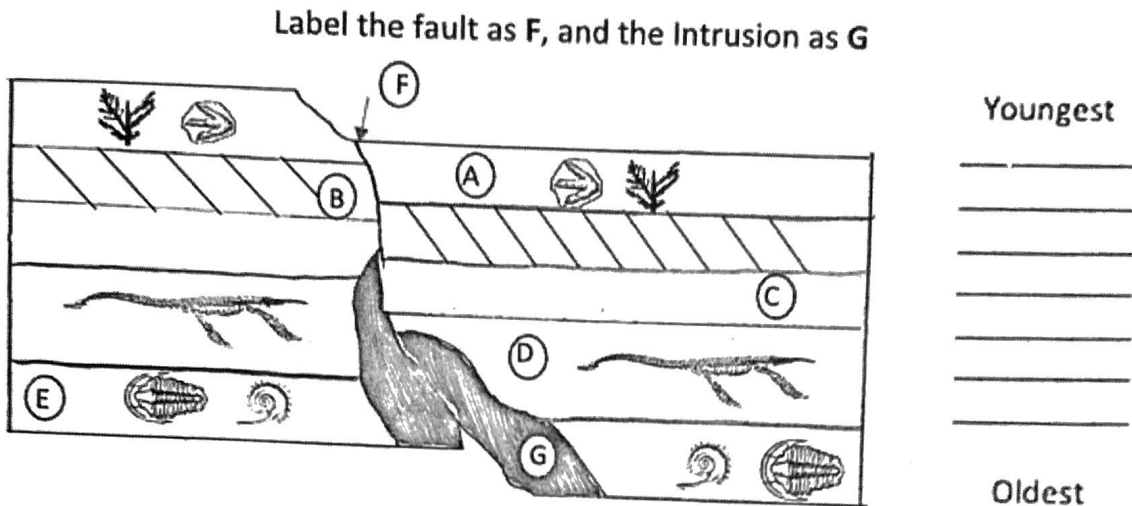


Name: _____

Period: _____

Review Packet

Question 1) Use the following image to put the layers in order from oldest to youngest



A population of tree frogs lives in an area that has many types of plants and trees. The skin of most of the frogs is grey, which blends in better with the bark of trees than with the leaves of plants. Some of the frogs have skin that is greener in color, which blends in better with grasses and leaves. Snakes and birds are predators of the frog. Humans have come to the area and are beginning to cut down the trees.

Describe the probability of survival for the tree frogs of each genetic variation of skin color if most of the trees are cut down. Use evidence from the passage above to support your answer.

Grey Frogs:

Green Frogs:

Name: _____



Period: _____

Read the following scenario, and using the provided data table, create a **DOUBLE LINE GRAPH** showing how the rabbit populations have changed over time

Both brown and white rabbits lived high in the Sierra Nevada Mountains. Over time, their populations began to grow out of control. As a result, scientists released several wolves into the region to try to control the rabbit population. Biologists then studied and collected data on the brown and white rabbit populations. Their data has been provided.

Data:

Rabbit Population over Generations		
Generation	White Rabbit Population	Brown Rabbit Population
1	80	100
2	120	90
3	150	60
4	180	35
5	200	20

Legend	
	White Rabbits
	Brown Rabbits

Explain a reason why the rabbit population continued to grow for white rabbits, while the population for brown rabbits declined.

Name: _____

Period: _____

Define the following vocab terms:

Evolution	
Overproduction	
Competition	
Genetic Variation	
Adaptation	
Natural Selection	
Speciation	
Physical Adaptations	
Behavioral Adaptations	
Fossils	<p>Permineralization:</p> <p>Natural Cast:</p> <p>Amber Preserved/ Preserved:</p> <p>Impressions:</p>

Name: _____

Period: _____

Geographical Distribution	
Embryology	
Comparative Anatomy	Homologous: Comparative Anatomy: Vestigial:
Molecular and Genetic	
Relative Dating	

In a paragraph, explain the significance of Darwin's Voyage that he went on. What theory did he develop? What pieces of evidence convinced him his theory was correct? What was his "Tree" Analogy?
