

PARENT NIGHT 2020

Topaz Base

Miss Black

Mrs. Ross



SUPPLIES

Due to Covid restrictions, we are unable to provide students with any supplies. It is imperative that students come prepared for daily learning:

- ❖ CHARGED laptop
- ❖ Composition Notebook for each class
- ❖ Sharpened Pencils
- ❖ Sharpie
- ❖ Glue Sticks
- ❖ Completed Work

GRADING

- ▶ To ensure success and to help with missing work, please check Infinite Campus with your student at least once per week.
- ▶ Based on Sky Ranch behavior guidelines, students will receive a weekly behavior grade and 1-2 academic grades.
- ▶ Examples of behaviors that would result in lowered grade would be:
 - ▶ Uncharged laptop
 - ▶ Unprepared for class
 - ▶ Talking during work/listening times
 - ▶ Off task
 - ▶ Misuse of technology
 - ▶ Missing work
 - ▶ Missing video lessons on distance days

SKY RANCH MIDDLE SCHOOL RUBRIC FOR GRADING BEHAVIOR



5	F – Always completes work and participates L – Always prompt and prepared with materials I – Demonstrates maturity in behavior and decision making – no steps G – Always engaged and puts forth effort despite obstacles H – Always takes ownership of words and actions T – Always respectful in interactions and language with others
4	F – Always completes work and participates often L – Always prompt and prepared with materials I – Demonstrates maturity in behavior/decision making after warning – Step 1 G – Often engaged and puts forth effort despite obstacles H – Often takes ownership of words and actions T – Respectful in interactions and language with others
3	F – Almost always completes work and participates L – Almost always prompt and prepared with materials I – Improves behavior and decision making after receiving a Step 2 G – Often engaged but may shut down when presented with obstacles H – Takes ownership of words and actions after prompt from teacher T – Respectful in interactions and language with adults but not peers
2	F – Completes work less than half the time or never participates L – Prompt and prepared with materials less than half the time I – Improves behavior and decision making after receiving a Step 3 G – Engaged less than half the time or shuts down completely when obstacles arise H – Takes ownership of words and actions with multiple prompts from the teacher T – Several disrespectful interactions with others or extremely inappropriate language
1	F – Rarely completes work and participates L – Rarely prompt and prepared with materials I – Receives a Step 4 G – Rarely engages and gives up when faced with obstacles H – Rarely takes ownership of words and actions even after multiple prompts by the teacher T – Multiple disrespectful interactions with others and extremely inappropriate language



GRADING

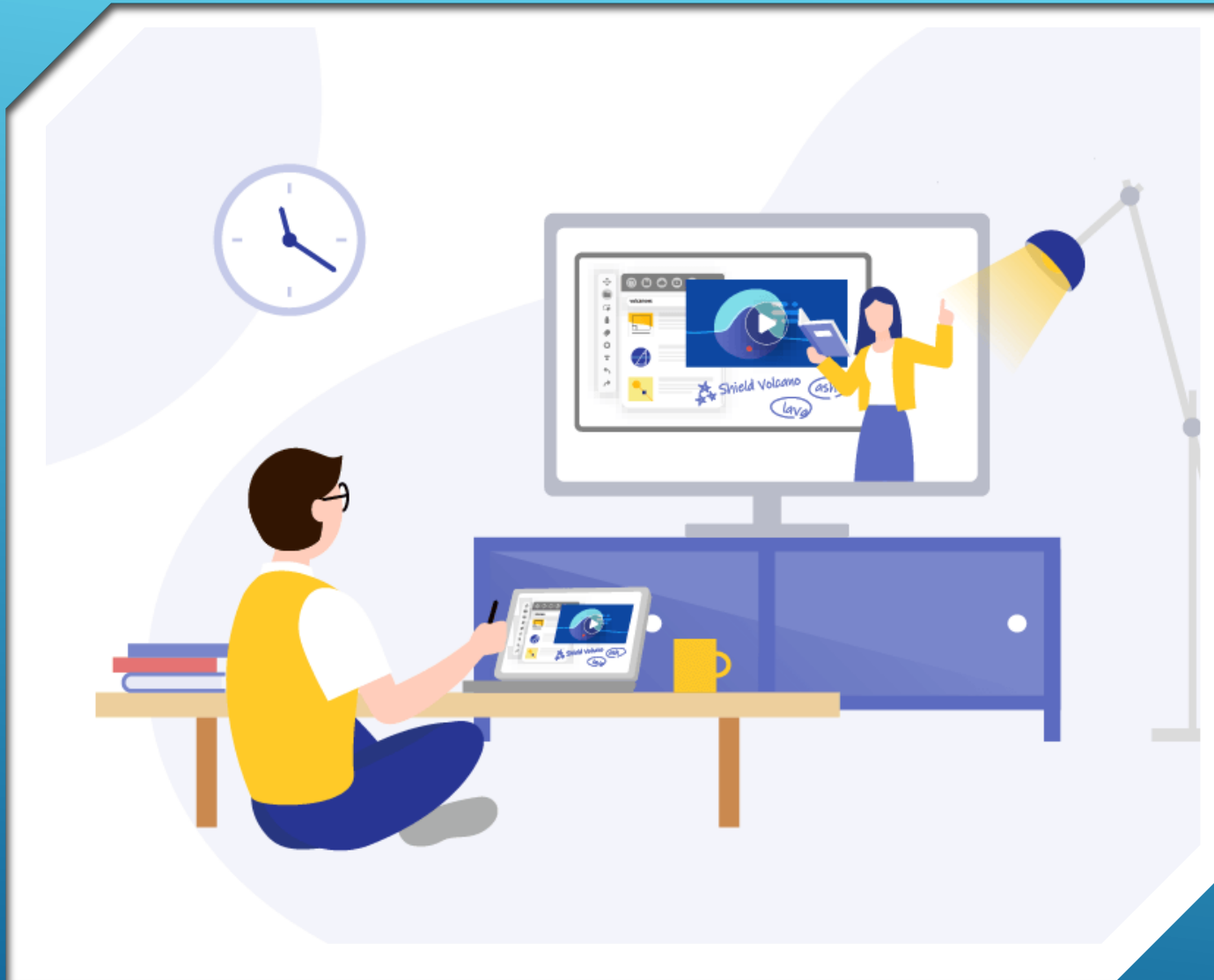
A	90% - 100%
B	80% - 89%
C	70% - 79%
D	60% - 69%
F	0% - 59%

- ▶ PLEASE UNDERSTAND THAT ATTENDANCE AND GRADING ARE TWO SEPARATE THINGS.
- ▶ Weighting of assignments:
 - ▶ Assessments/projects = 85% of overall grade
 - ▶ Classwork = 15% of overall grade
- ▶ In most cases, students will be able to retake an assessment one time in order to improve his/her grade. Students will have to show evidence of preparing for the retake opportunity and have no missing assignments.
- ▶ Attendance:
 - ▶ If the form in Teams is not completed by 2pm of that school day, your student will be marked absent.
 - ▶ Distance Learning: There will be a video lesson that your student must attend to receive the content for that school day.

LIVE MEETING EXPECTATIONS

- ▶ LIVE MEETING INVITES & LINKS CAN BE FOUND AS A POST IN TEAMS IN THE VIDEO LESSONS CHANNEL.
- ▶ JOIN MEETING ON TIME AND STAY IN MEETING FOR DURATION OF LESSON. THERE WILL BE NO MORE LEAVING/REJOINING THROUGHOUT THE MEETINGS AS IT IS TOO DISTRACTING AND INTERRUPTS FLOW OF LESSON.
- ▶ STUDENTS NEED TO PARTICIPATE IN THE LESSON!
- ▶ STUDENTS WITH MEDIA RESTRICTIONS MUST JOIN MEETING WITH CAMERA AND AUDIO OFF. THEY MAY NOT PARTICIPATE IN THE CHAT OR ASK QUESTIONS. WE CAN HAVE THIS RESTRICTION UPDATED UPON PARENT REQUEST.
- ▶ STUDENTS HAVE DAILY ASSIGNMENTS OR LIVE LESSONS, WHETHER THEY ARE AT HOME OR AT SCHOOL.

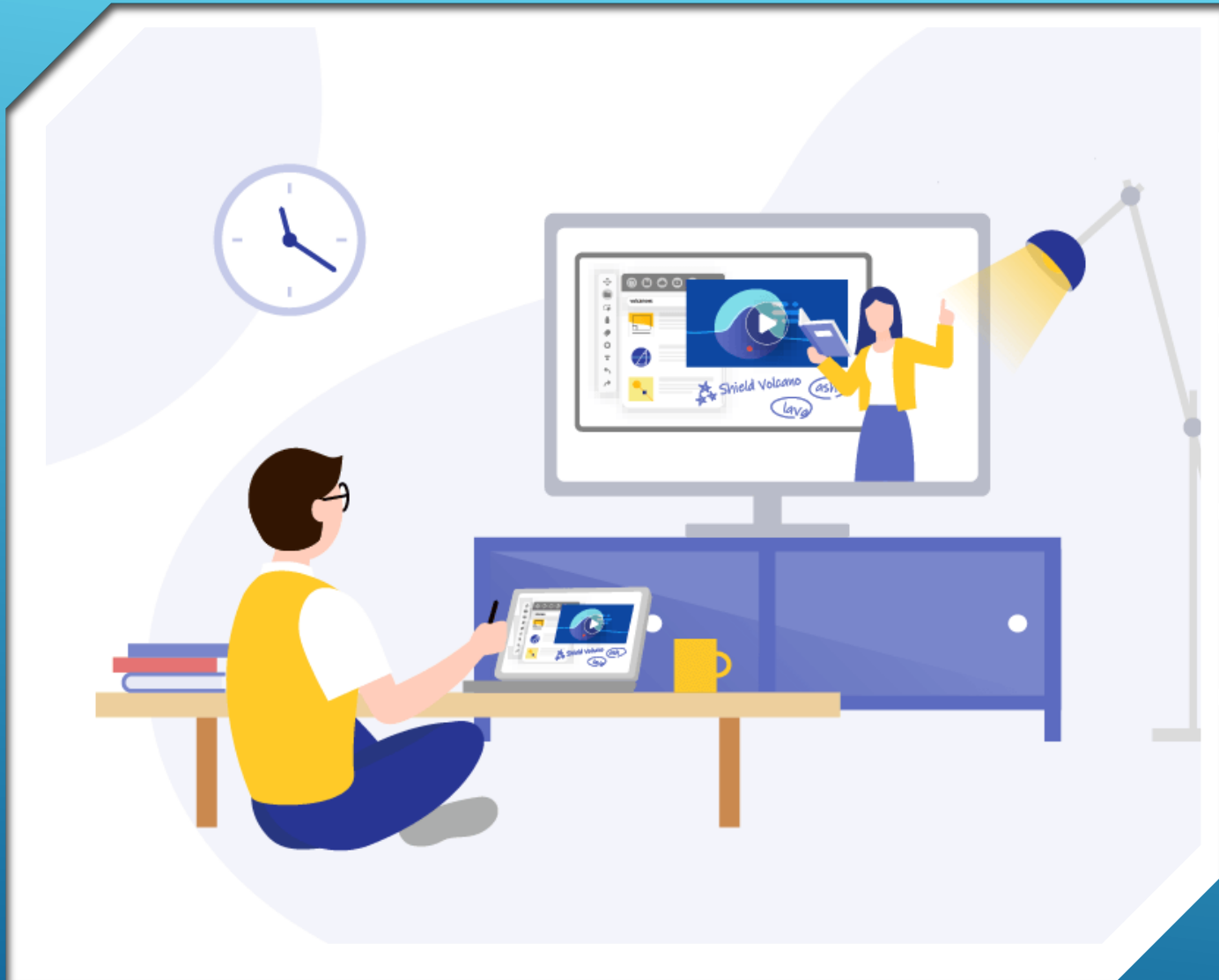




DISTANCE LEARNING ASSIGNMENTS

- ▶ **DL IS NOT SELF-PACED. STUDENTS SHOULD FOLLOW THEIR 1ST - 6TH PERIOD SCHEDULES MONDAY – FRIDAY.**
- ▶ **Pushed out each morning and due by 2 PM**
- ▶ **AT THIS POINT, LATE WORK IS NOT BEING MARKED DOWN.**
- ▶ **STUDENTS SHOULD CHECK EVERY TEAM FOR ASSIGNMENTS. CHECK MORE THAN ONCE EACH DAY.**

DISTANCE LEARNING ASSIGNMENTS



DL ATTENDANCE FOR GLOBAL AND ENRICHMENT. BE SURE TO FILL OUT THE CHECK FOR UNDERSTANDING FORM DAILY. IT IS A TAB IN EACH TEAM.

STUDENTS MUST BE EDITING THE FILE IN THEIR NOTEBOOK IN ONENOTE. IF THEY ARE IN THE CONTENT LIBRARY, THEY WILL NOT BE ABLE TO EDIT THE DOCUMENT.

STUDENTS MAY NOT EMAIL ASSIGNMENTS TO TEACHERS. THIS IS OVERWHELMING TO KEEP TRACK OF. PLEASE USE THE "ATTACH WORK" BUTTON IN TEAMS.

FILLING OUT THE PLANNER IS A DAILY EXPECTATION AND CAN BE FOUND ON THE WEBSITE. PARENTS MAY REFERENCE THIS FOR ASSIGNMENTS.

QUICK LINKS

- AESOP Substitute Placement
- Careers in WCSD
- Committees - Apply to Join
- Contact Us
- District Directory
- Employee Online
- Infinite Campus Parent / Student Login



Infinite Campus

Washoe County

Log in to

Campus Student

or

Campus Parent

INFINITE CAMPUS

IC app:
Remember to refresh the page.

CAMPUS

Campus Student

Attention all students! Say hello to your new best friend this school year, Campus Student. Campus Student puts your school...

[View more >](#)

CAMPUS

Campus Parent

Attention all parents and guardians! Campus Parent puts your student's school information at your fingertips. Real-time access to...

[View more >](#)

We try to update grades weekly in IC. If an assignment is missing or a mistake has been made, we ask the students to email us the assignment, date, and question.

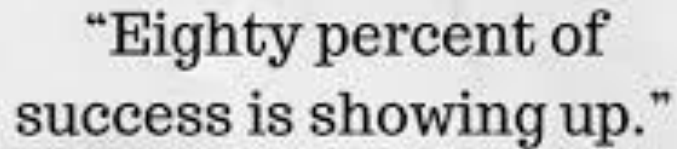
Please check grades at least once a week with your student. They will be recording their grades in their planners too.

ACADEMIC WARNINGS

Academic warnings will be issued for students who are earning a “D” or below.

These are issued at midpoint of each quarter to give students an opportunity to improve grade prior to end of nine weeks.

ATTENDANCE



“Eighty percent of
success is showing up.”

Woody Allen

Have4notes.com

- ▶ **PLEASE MAKE SURE YOU ARE USING THE SELF SCREENER EVERYDAY THAT DISTRICT HAS SENT OUT.**
- ▶ **Per WCSD policy, students have the amount of days missed plus one day to make up all work from absences.**
- ▶ **With so many students, we cannot keep track of who missed which period. It is the student's responsibility to obtain and return all makeup work.**
- ▶ **Students will be marked absent if they do not join the video lessons on distance days, do not complete the attendance form, or do not complete work on their distance day.**

MATH/SCIENCE

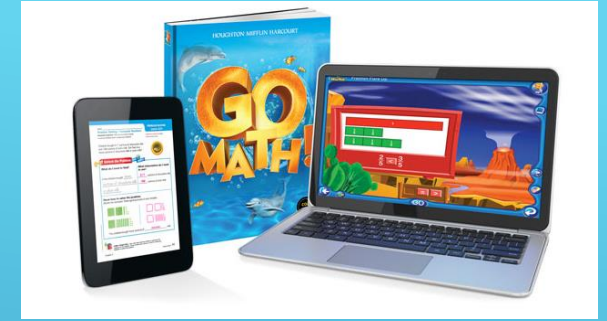
Math program is GoMath.

Information is updated into their OneNote for the lessons that we are working on in class.

Science program is FOSS.

Online resource is fossweb.com. We are starting with Weather and Water.

All students have their own login & pswd.



FOSSWEB

MATH/SCIENCE RETAKE POLICY

- If your students does not like their score on a math or science test, they may retake it one time.
- To complete a math retake, students must NOT be missing any work in math and must show evidence of studying by completing a test corrections form.
- To complete a science retake, students must NOT be missing work and must show evidence of studying by completing a five-paragraph expository essay stating the knowledge they learned from the key concepts of the investigation.

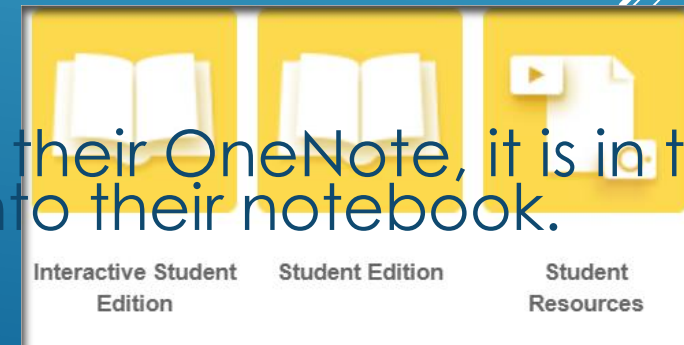
TEAMS/ONENOTE



- ▶ Your child has a Team for each of their classes where they can view assignments, check for homework, and take/submit tests.
- ▶ Within each Team, there is a notebook called OneNote. This is where they "work" in their notebook. They take notes, work on classwork, access information, and view previous work.
- ▶ Students can also ask for help in Post/Conversations from other students or teacher. They can also privately email the teacher too.
- ▶ Just because students turn in assignments, it does NOT mean they are complete. Please ask them to show you their work.
- ▶ Due to COVID restrictions, paper assignments will be VERY limited this year. Students MUST complete and turn in work through Teams and OneNote.

FLIPPED CLASSROOM

- ▶ Math content will be to watch a video, practice problems, and learn from their activities.
- ▶ We've gone over together in class the directions for accessing GoMath for homework/classwork. If they forgot, there is a view in their Math Teams File.
- ▶ Go to www.washoeschools.net
 - ▶ Click on the Students and Parents tab.
 - ▶ In the Students and Parents Directory, under H, click on HRW – GoMath!
 - ▶ On the sign in page, sign in using washoe\student id number. Your password is the same you use to log in to your device.
- ▶ Click on Interactive Student Edition. Explore. Explain. Elaborate.
- ▶ Watch 'Video on the Spot' for the lesson.
- ▶ If your student accidentally deletes the page in their OneNote, it is in their Content Library tab. They can copy the page into their notebook.



ELA/SOCIAL STUDIES

Independent Reading/AR Student Contract

- I will review my point goal in Accelerated Reader and check my progress.
- I will read at LEAST 20 minutes per night.
- I will only test on books I have read entirely.
- I understand that the novel we read as a class will NOT count towards my AR points.
- I will not attempt to test on books I read in previous years (these are in the AR system).
- If I read a book that has been made into a movie or TV show, I will take notes (at least ten), or I will NOT be allowed to take the quiz (you can use these notes on the AR quiz).
- I understand I am not allowed to use digital books during my AR test.
- I will demonstrate my analysis of and interaction with my book by completing Reader's Journal assignments, *which will be counted as a quiz grade in the gradebook.*
- To take an AR quiz, I will ask my teacher. I will take the test at lunch in my teacher's classroom OR during class at appropriate times (determined by the teacher).
- I will not copy answers, tell someone the answers to a test, or try to get answers from someone else. I will not have anyone help me take a test, except my English teacher, if appropriate.
- I understand that any form of cheating (including using cellphones while testing) is inappropriate. (Any student found cheating will receive no credit for Independent Reading/Accelerated Reader for the quarter).
- I will bring my AR book to every class every day.
- I will bring my AR book to my Enrichment class and read 100% of the time allotted for reading.
- I understand how I am graded. 1/3 of my grade comes from the average test score and 2/3 of my grade comes from my progress towards my point goal. |
- I will meet my goal on or before the deadline for the quarter.

Student Name _____ Point Goal: _____

Student/Parent Agreement to Independent Reading Contract

Student Signature _____ Date _____

Parent / Guardian Signature _____ Date _____

Homework is 25 minutes of nightly reading. Any unfinished classwork will also become homework.

Goal- Students goal will be set based on their MAPs scores using the chart

RIT Score	Point Goal
160-170	3
171-189	4
190-198	5
199-206	6
207-212	8
213-215	10
216-220	11
221-224	13
225-227	16
228-230	19
231-233	20
234-238	22
239+	25

ELA/SOCIAL STUDIES

- Reading Check-Ins- weekly reading check-in with students will occur to ensure they are making progress in their IR book.
 - Grading: Students will be graded based on their average test score and percentage of point goal completed. The test score will be 1/3 of their grade. The percentage of goal completed will be 2/3 of their grade. This averaged score will go in IC.
 - Example: 80% of goal completed and 90% average test score.
- $80+80+90= 83$ 83 would be inputted into IC
- Reading projects will also be assigned but students and parents will receive ample notice to ensure success.
- Thank you for your patience while specifics are still unfolding.



ELECTIVE RESOURCES



Sky Ranch Electives

2020-2021

Get to know the teachers by clicking
the class name or scan the code!

STEM



maochs@washoeschools.net

VISUAL ART



kcarter@washoeschools.net

BAND



Patricia.Hudson@washoeschools.net

CHOIR/DRAMA



Sarah.Bryant@washoeschools.net

ORCHESTRA



bsteelmon@washoeschools.net

GRAPHIC DESIGN



Lstien@washoeschools.net

LIVING STEM



mrzinser@washoeschools.net

LEADERSHIP/
YEARBOOK



jgravenstein@washoeschools.net

SPANISH



Stwalker@washoeschools.net

21ST CENTURY
MEDIA



mbowers@washoeschools.net

PE



srjohnson@washoeschools.net
mbosco@washoeschools.net
Ryan-hill@washoeschools.net

LIBRARY RESOURCES

SKY RANCH MIDDLE SCHOOL LIBRARY

RESOURCES FOR STUDENT SUCCESS



Destiny allows students to view the library collection of books, place holds, get links to databases, write reviews of their favorite reads, find eBooks/ audiobooks and build personalized collections for research. Destiny is also the place where students can place a work ticket if they are having computer issues.



Accelerated Reader is a computer-based tool that is used to monitor students reading progress. All the books in the library are labeled with AR reading level and points. If you get a book outside of school you can check the level and points at: www.arbookfind.com



Mackin Via is a complete eResource management system providing easy access to eBooks, audiobooks and educational databases. With just one login, users can view, utilize, and manage all of their eResources while utilizing digital tools for interacting with texts.



Databases are an excellent way to get reliable information as well as curriculum support. **Learning Express** is great for skill-building resources for classroom and homework success, for elementary through high school levels.



The **Makerspace** is where students go to **learn, design, and create** in the areas in STEAM. Each of the tinkering opportunities will help students with skills like problem solving, following directions, creativity, collaboration and analytic thinking. Part of the space is a Kindness is Making activity where students can create something for the various causes we select throughout the year.



SRMS Library YouTube Playlist features book trailers to some of the books that are in our collection. Watching a book trailer can sometimes capture students' attention more than just reading the book summary. The link to the playlist is on our Destiny page along with other fun links for student engagement.

Want More Resources?

GO TO SKY RANCH MIDDLE SCHOOL WEBSITE AND SELECT *LIBRARY LANDING*

- ▶ If you have questions, please email us.
 - ▶ sablack@washoeschools.net
 - ▶ kburst@washoeschools.net

THANK YOU FOR COMING!

Have a nice evening!

A decorative graphic in the bottom right corner featuring a cluster of purple flowers with yellow centers, hanging from a thin green stem. Below the flowers are several parallel white diagonal lines that sweep across the bottom right corner of the slide.