



Senior Information Night

Post-Secondary Planning

Please scan to
sign in



Incline High School Counseling Team

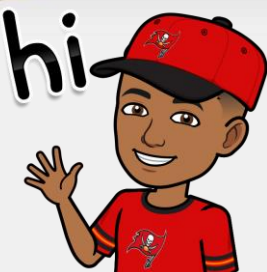
- Sara Coombes – Lead Counselor, last names A-J
- Robin Rife – Counselor, last names K-Z
- Deirdre Carney – College & Career, Internships, Advisory
- Arturo Fragoso – FGA (Family Graduation Advocate)
- Briana Barraza – Counseling Clerk
- Elizabeth Tamietti – Mental Health Professional



FAMILY GRADUATION ADVOCATE

ARTURO FRAGOSO

- Monitor
Grades
- Credit
Attainment
- Attendance



Planning for a future of your choosing

4yr
College

2yr
College

Trade
School
or Certificate

Military

Employment



4 Year Colleges



University of Nevada, Reno



NEVADA STATE
UNIVERSITY





University of Nevada, Reno



ADMISSIONS – 3 WAYS TO GET IN!

- Core Courses GPA of 3.0, weighted includes best 3 math, best 3 science, 4 English, and 3 social studies.
- **OR**
- Advanced diploma from a Nevada high school 3.25 cumulative GPA(24 credits, 4 math, 4 English, 3 science).
- **OR**
- Test score WAIVER – ACT score of 22 composite or SAT of 1120 (reading and math only) .

test scores not required for admission—GPA may be used



3 REASONS TO GET GOOD GRADES AND STUDY FOR THOSE COLLEGE ENTRANCE EXAMS !!!!!

NEW FRESHMEN SCHOLARSHIP AWARD LEVELS

- ☐ New incoming freshman students who have completed all admissions requirements by February 1 are **automatically considered** for the scholarship programs listed on this page upon admission.
- ☐ Students awarded reduced tuition through the **Pack Exchange Program (PEP)** or **Western Undergraduate Exchange (WUE)** may only be considered for National Merit®, Presidential, and departmental scholarships.

UNWEIGHTED HIGH SCHOOL GPA | ACT COMPOSITE OR SAT (SINGLE EXAM SITTING)

ACT SAT	36 1570	35 1530	34 1490	33 1450	32 1420	31 1390	30 1360	29 1330	28 1300	27 1260	26 1230	25 1200	24 1160	23 1130	22 1100		
4.0	<div>PRESIDENTIAL LEVEL</div> <div>\$8,000</div> <div>per year for four years of undergraduate study.</div>																
3.9																	
3.8																	
3.7																	
3.6								<div>NEVADA SCHOLARS LEVEL</div> <div>\$3,000</div> <div>Not available to WUE and PEP recipients.</div>									
3.5																	
3.4												<div>PACK PRIDE LEVEL</div> <div>\$2,000</div> <div>Not available to WUE and PEP recipients.</div>					
3.3																	
3.2																	

*Students may only receive one scholarship from the programs listed above. For more details on the National Merit® Scholarship's additional requirements, please visit unr.edu/financial-aid. Visit unr.edu/financial-aid/scholarships/first-year-scholarships for full eligibility requirements.

— OR —
RECEIVE A
SCHOLARSHIP BASED
ON UNWEIGHTED
HIGH SCHOOL GPA ONLY

GPA	Scholarship Level	Award
4.0	Nevada Scholars Level	\$3,000
3.8-3.9	Pack Pride Level	\$2,000
3.5-3.7	Wolfie Level	\$1,500

\$16,000
NATIONAL MERIT®
SCHOLARSHIP*

This prestigious scholarship awards qualifying National Merit Finalists for four years of undergraduate study.

** Don't forget to check out your dream school of choice's scholarship awards – go to their website





OCTOBER 20th



REGISTER AT:

[//admissions.unr.edu/register/InclineHighSchool10202023](https://admissions.unr.edu/register/InclineHighSchool10202023)

The Nevada Bound is a full-day program where prospective students and their families will have the opportunity to:

- Navigate the steps to apply for admission.
- Learn about financial aid and scholarships.
- Explore your future major and meet the faculty.
- Hear from our residential life experts.
- Take a guided tour of the campus.
- Enjoy lunch with us; our treat!



APPLICATION TIMELINES

Early Action (EA)

- Non-binding option
- Submit by November 1st.
- Receive early response-around winter break.

Restrictive Early Action (REA)

- Similar to Early Action
- Often limits other early applications
- Early notification by December

Early Decision (ED)

- Binding commitment to one school
- Apply by November 1st
- Early decision notification- must withdraw all other applications & attend

Regular Decision

- Standard deadline, typically Jan 1st or Feb 1st
- Non-binding, multiple applications allowed
- Notifications by April

Rolling

- Continuous acceptance
- No fixed deadline
- Apply early for better chances

**Verify on school websites to alternate variations of these and those that meet schools' scholarship opportunities or special program deadlines



When to apply?



Early Action

- * Complete your college application process early and learn your outcome around winter break
- * Students who are deferred will have a second review during the regular admissions cycle and can supplement their application with updated grades and awards

Early Decision

- * Since contract is binding, colleges may be more likely to admit a student on the cusp
- * Apply ED to dream schools and those you can safely afford

Regular Decision

- * Winter timeline gives student 1st semester to raise grades and receive honors/awards

APPLICATION TYPES

Common App

- Used by over 800 colleges
- Streamlines your application process so you can complete less paperwork & have everything located on one site

College Portals

- Required application method for a select group of schools
- Can be eligible for fee waivers through this application method

***Always review options on the school's website prior to choosing an application type*



Counselor/Teacher Recommendation Letters

College Recommendation Letter Request

- Submit request/resume to your counselor or teacher at least 2 weeks prior to your deadline.
- Recommendation information forms available in the counseling office.



Common Data Set

• What is the Common Data Set?

It is a cooperative initiative designed to ensure data shared is high quality and accurate so prospective students can compare data from school to school.



What's included in the Common Data Set?

- General Info – type of school and degrees offered
- Enrollment – % of students in various demographics who earn degrees
- First time, first year admission – info about freshmen students such as class rank, GPA, and extracurriculars in the admissions process
- Transfer admission – transfer timing, requirements, etc.
- Academic offerings
- Student life – housing, extracurriculars/activities, demographics, etc.
- Annual expense and financial aid

C5 Distribution of high school units required and/or recommended. Specify the distribution of academic high school course units required and/or recommended of all or most degree-seeking students using Carnegie units (one unit equals one year of study or its equivalent). If you use a different system for calculating units, please convert.

	Required	Recommended
Total academic units	13	
English	4	
Mathematics	3	
Science	3	
Of these, units that must be	2	
Foreign language		
Social studies	3	
History		
Academic electives		
Computer Science		
Visual/Performing Arts		
Other (specify)		

C7 Relative importance of each of the following academic and nonacademic factors in your first-time, first-year, degree-seeking general (not including programs with specific criteria) admissions decisions.

	Very Important	Important	Considered	Not Considered
Academic				
Rigor of secondary school record	X			
Class rank				X
Academic GPA	X			
Standardized test scores		X		
Application Essay				X
Recommendation(s)				X
Nonacademic				
Interview				X
Extracurricular activities				X
Talent/ability				X
Character/personal qualities				X
First generation				X
Alumni/ae relation				X
Geographical residence				X
State residency				X
Religious affiliation/commitment				X
Racial/ethnic status				X
Volunteer work				X
Work experience				X
Level of applicant's interest				X

ACT/SAT

ACT

- WCSD graduation requirement – taken Junior year for free at IHS.
- Students can take as many times as they'd like outside of WCSD proctored exam date on their own.
- Click here to see dates and deadlines: [ACT](#)



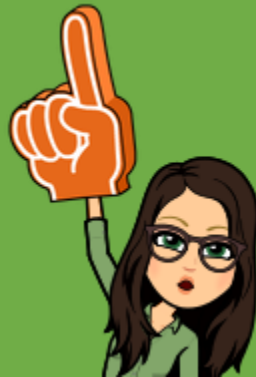
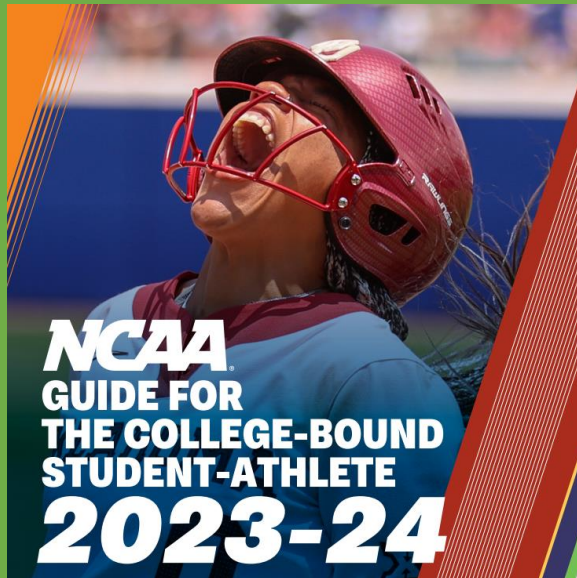
SAT

- SAT is not a high school grad requirement, though many colleges will accept SAT scores as part of admissions considerations.
- Click here to see dates and deadlines: [SAT](#)



Always review test requirements on the school website

NCAA



Want to play college sports?



Register at <https://web3.ncaa.org/ecwr3/>

Eligibility Info: http://fs.ncaa.org/Docs/eligibility_center/Student_Resources/CBSA.pdf



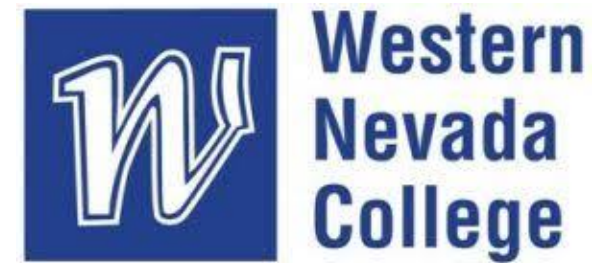
Thinking of Going Pro?

There are more than 500,000 NCAA student-athletes, and **less than 2%** will go pro in their sport.

	Men's Basketball	Women's Basketball	Football	Baseball	Men's Ice Hockey
High School Student-Athletes	540,800	399,100	1,006,000	482,700	35,300
NCAA Student-Athletes	18,800	16,500	73,700	36,000	4,300
NCAA Student-Athletes Drafted	52	31	254	791	71
*Percentage High School to NCAA	3.5%	4.1%	7.3%	7.5%	12.3%
*Percentage NCAA to Professional	1.2%	0.8%	1.6%	9.9%	7.4%

*Percent NCAA to major professional figures are based on the number of draft picks made in the NBA, WNBA, NFL, MLB and NHL drafts.

2 Year Colleges



Benefits of Jr. Colleges

- **Cost Savings** - lower tuition and fees
- **Flexible Scheduling** - variety of class schedules, including evenings and weekends
- **Small Class Sizes** - students receive more personalized attention from professors
- **Transfer Opportunities** - often have transfer agreements with universities
- **Exploration of Academic Interests** - can explore different subjects and career paths
- **Career and Technical Programs** - many offer vocational & technical programs: job-ready skills and industry-recognized certifications.



TMCC offers hundreds of workplace certificate programs; check them out:



Area of Interest

- ☐ Architecture, Construction, and Building Trades
- ☐ Business, Entrepreneurship, and Professional Services
- ☐ Computer and Information Technology
- ☐ Culinary & Hospitality
- ☐ Education and Child Development
- ☐ General Education
- ☐ Graphic Arts and Media
- ☐ Health Care and Veterinary Medicine
- ☐ Languages and Communications
- ☐ Law and Public Safety
- ☐ Manufacturing and Production
- ☐ Science, Technology, Engineering, and Mathematics
- ☐ Society, Social Sciences, and Human Services
- ☐ Transportation and Logistics
- ☐ Visual & Performing Arts

Academic Divisions

- ☐ Business and Social Sciences
- ☐ Liberal Arts
- ☐ Life Sciences, Allied Health, and Public Safety
- ☐ Math and Physical Sciences
- ☐ Technical Sciences

Program Type (Degrees & Certificates)

- ☐ Short-term Certificate (Skill Certificate)
- ☐ Certificate of Achievement
- ☐ Applied Associate Degree
- ☐ Transfer Associate Degree
- ☐ Bachelor's Degree



SCHOLARSHIPS

[Fastweb.com](https://www.fastweb.com)

[Scholarships.com](https://www.scholarships.com)

[Studentaid.ed.gov](https://studentaid.ed.gov)

[Bigfuture.collegeboard.org](https://bigfuture.collegeboard.org)

Millenium: www.nevadatreasurer.gov



NEVADA SPECIFIC SCHOLARSHIPS



Nevada Promise

Covers the gap between
community college tuition/fees and
federal/state aid for NV residents
Application due October 31st



Millennium Scholarship

Merit based- no application
needed Pays up to \$10,000 award
9 eligible institutions in NV



IHS Scholarship Program

Offers local community
scholarships to students. We will
facilitate this application in
January



FAFSA: FREE APPLICATION FOR FEDERAL STUDENT AID

****All students must complete FAFSA to get federal aid**

- Students submit:
 - Demographic information
 - Enrollment plan information for the next year
 - Income and assets from tax returns (both parents and student) of prior-prior year
 - Opens December (likely)
 - Generates SAI – Student Aid Index
 - Gets passed along to the college or university, which is then responsible for calculating which aid programs the student qualifies for and notifying the student of their available funding for the year
 - Support Workshops – January 23rd & 30th
- Website- studentaid.ed.gov



ELIGIBLE FOR FREE FEES?



You may be eligible for:

- ACT
- SAT
- Free meals
- Sport fees
- And more!



Other Pathways

Trade Schools/Apprenticeships

- Career College of Northern Nevada
- Milan Institute of Cosmetology
- Universal Technical Institute
- Carpenters JATC of Northern Nevada
- Northern Nevada Electrical Training Center
- UA Local 350 Plumbers, Pipefitters, Welders, & HVAC
- Northern Nevada Building & Trades

Employment

- Certificate programs
- Identifying skills & qualifications

Military

- Army
- Navy
- Marines
- Air Force
- Space Force
- Coast Guard
- Army National Guard
- Air National Guard

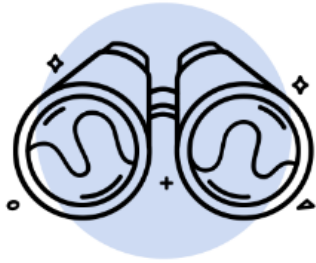


So what's next? ➡ Big Future

Big Future is a free online planning guide that helps all students take the right first step after high school. You can check out careers you're interested in. You can find colleges based on what's important to you. You can discover ways to pay for college.

See Your Options

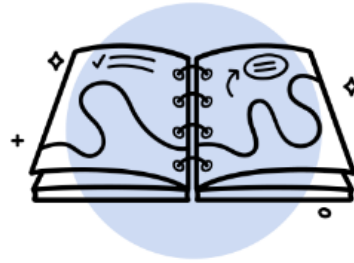
What do you want to do after high school? Answer questions to help you make a plan.



Career Quiz

Use your passions and interests to get matched with possible career paths.

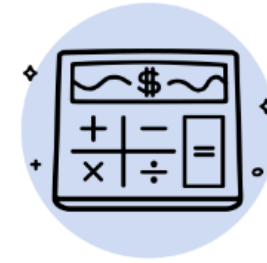
Take the Career Quiz



College Quiz

Are you looking for a big school? Something close to home? Find what schools are right for you.

Take the College Quiz



Scholarship Quiz

6,000 scholarship programs are giving away \$4 billion a year. Let's get you some!

Take the Scholarship Quiz

<https://bigfuture.collegeboard.org/>



Upcoming Dates

- | | |
|---|--|
| <ul style="list-style-type: none">• UNR Application OPEN NOW• Nevada Promise Application OPEN NOW• Oct. 13th – Construction Career Day• Oct. 17th – UNR Information Night• Oct. 18th – Grand Canyon University recruiter on campus | <ul style="list-style-type: none">• Oct. 20th – Nevada Bound• Oct. 24th – Willamette University recruiter on campus• Oct. 25th – TMCC/ Nevada Promise Night• Oct. 31st – Nevada Promise Application DUE |
|---|--|





Scan QR for presentation materials

Any Questions?

